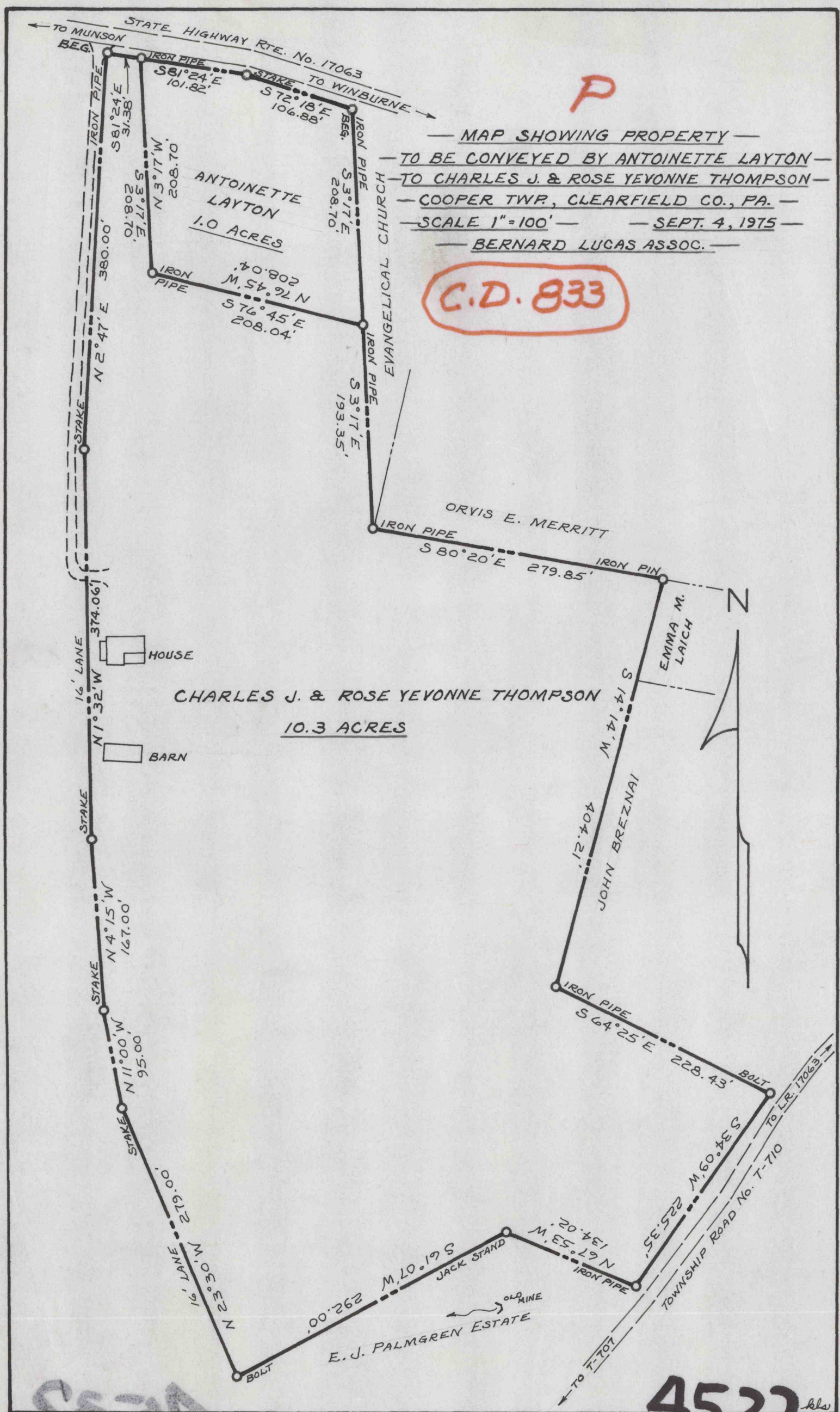


P

— MAP SHOWING PROPERTY —
— TO BE CONVEYED BY ANTOINETTE LAYTON —
— TO CHARLES J. & ROSE YEVONNE THOMPSON —
— COOPER TWP, CLEARFIELD CO., PA. —
— SCALE 1"=100' — — SEPT. 4, 1975 —
— BERNARD LUCAS ASSOC. —

C.D. 833



5027

4532