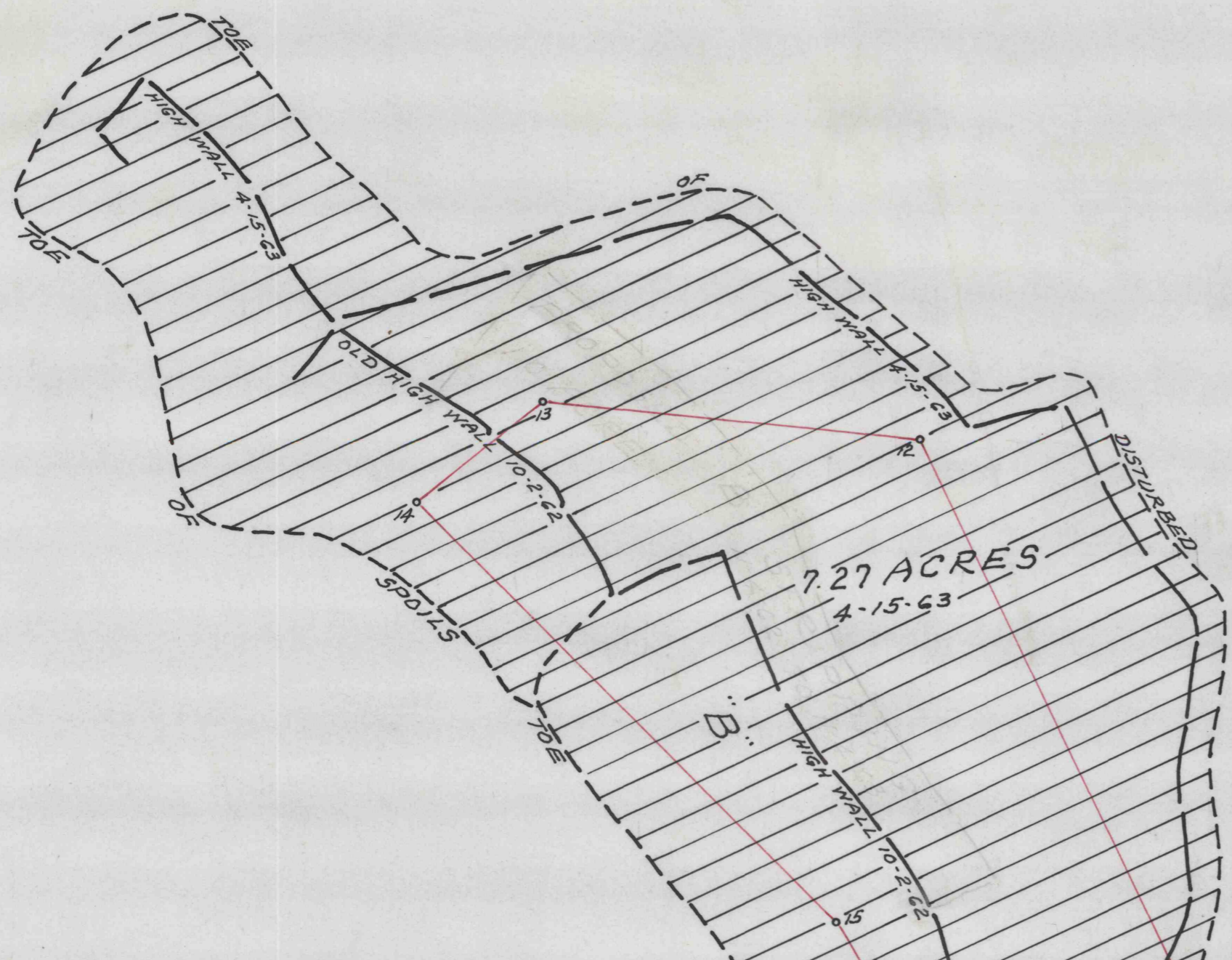
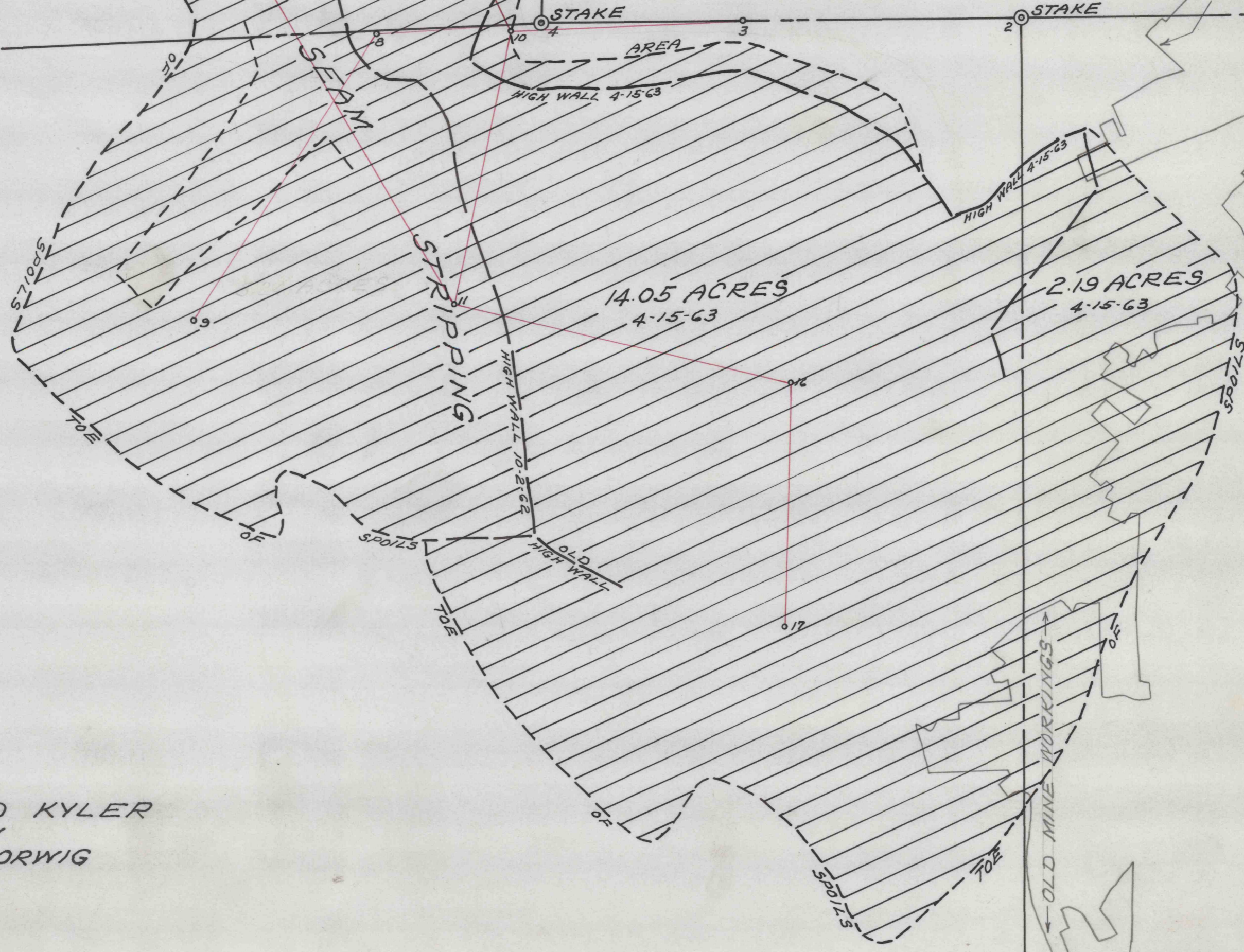
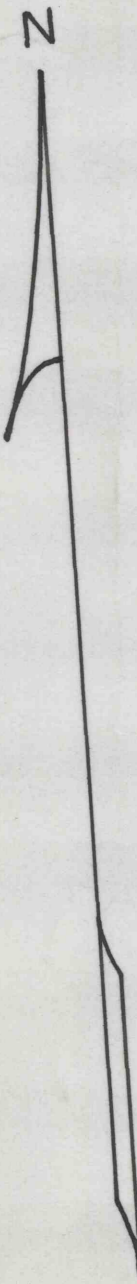


ALEX SHEILDS
NOW
ROSCOE ORWIG



MRS. EISENHOWER

GRAHAM TOWNSHIP
MORRIS TOWNSHIP



ADAM MOYER
C.B.C. CORP.

LEONARD KYLER
NOW
ROSCOE ORWIG

NOTE:
4-15-63 BACKFILLED LEVELED & PLANTED 23.51 ACRES

M

— MAP SHOWING "B" SEAM STRIPPING —
— OPERATED BY KRISTIANSON & JOHNSON COAL CO. —
— MORRIS & GRAHAM TWPS. CLEARFIELD COUNTY PENNA. —
— SCALE 1" = 100' — OCT. 5 1962 —
— BERNARD LUCAS ASSOC. —

C.D.718

SLSA

4212