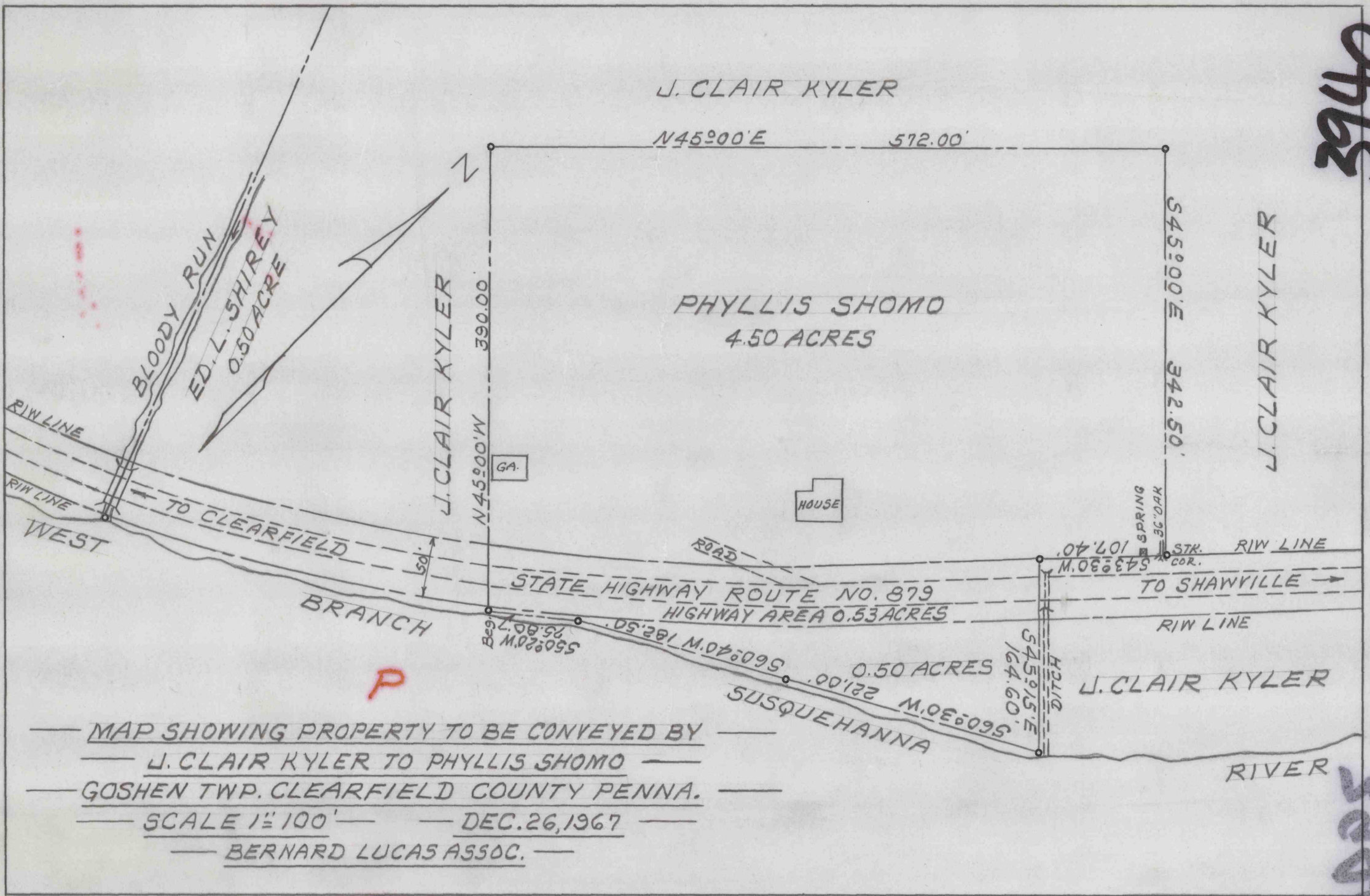


3940



J. CLAIR KYLER

J. CLAIR KYLER

N45°00'E 572.00'

PHYLLIS SHOMO
4.50 ACRES

J. CLAIR KYLER

N45°00'W 390.00'

GA.

HOUSE

SPRING
36' OAK

STR.
COR.

RIW LINE

RIW LINE

WEST

BLOODY RUN

ED. L. SHIREY
0.50 ACRES

TO CLEARFIELD

BRANCH

STATE HIGHWAY ROUTE NO. 879
HIGHWAY AREA 0.53 ACRES

543°30'W
107.40'

TO SHAWVILLE

RIW LINE

550°20'W
75.80'

560°40'N
182.50'

0.50 ACRES

SUSQUEHANNA RIVER

545°15'E
164.60'

J. CLAIR KYLER

RIVER

MAP SHOWING PROPERTY TO BE CONVEYED BY
 J. CLAIR KYLER TO PHYLLIS SHOMO
 GOSHEN TWP. CLEARFIELD COUNTY PENNA.
 SCALE 1" = 100' — DEC. 26, 1967
 BERNARD LUCAS ASSOC.

G.D. 755

3940