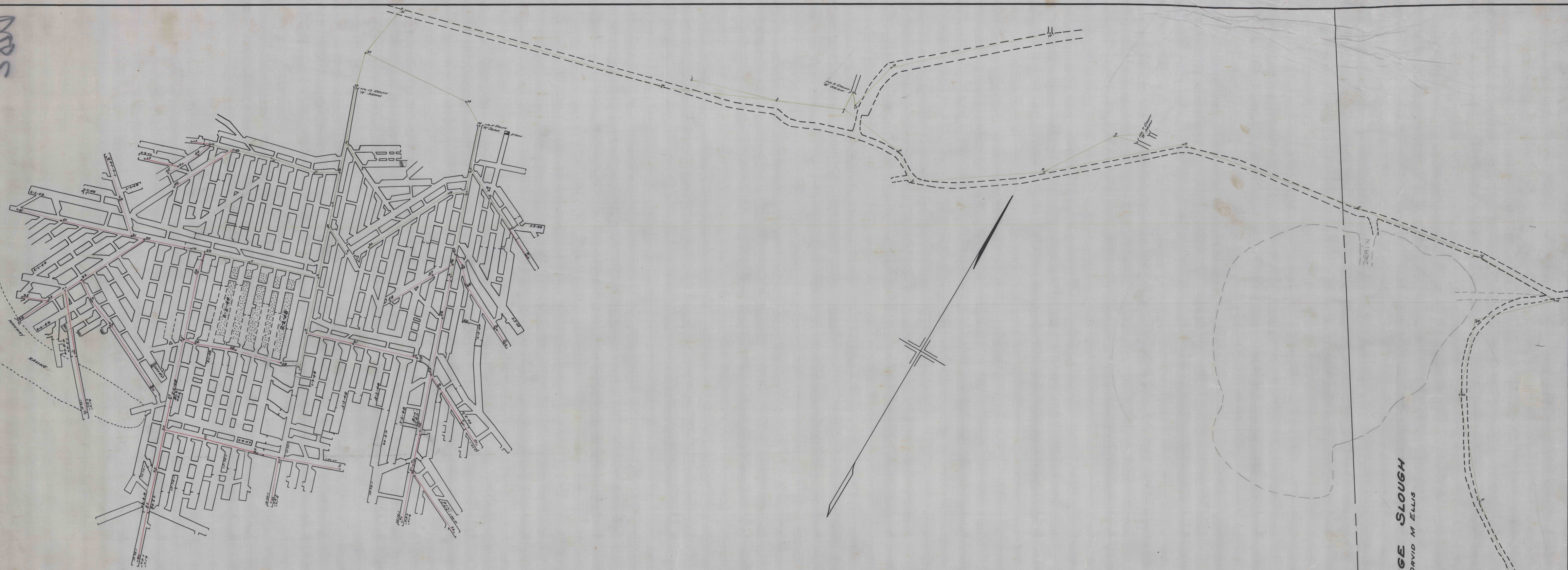


4885



JOHN GUNDAKER
DAVID M. ELLIS

GEORGE SLOUGH
DAVID M. ELLIS

D
MAP SHOWING WORKINGS OF
NO 11 & 12 DRIFTS "A" SEAM
OPERATED BY DUGAN COAL MINING COMPANY
RUSH TOWNSHIP CENTRE COUNTY PENNA.
SCALE 1 IN. = 100 FT. — APRIL 3, 1946

C.D. 223

GEORGE LUCAS
TOWN & MINING
ENGINEER



2804