

1925

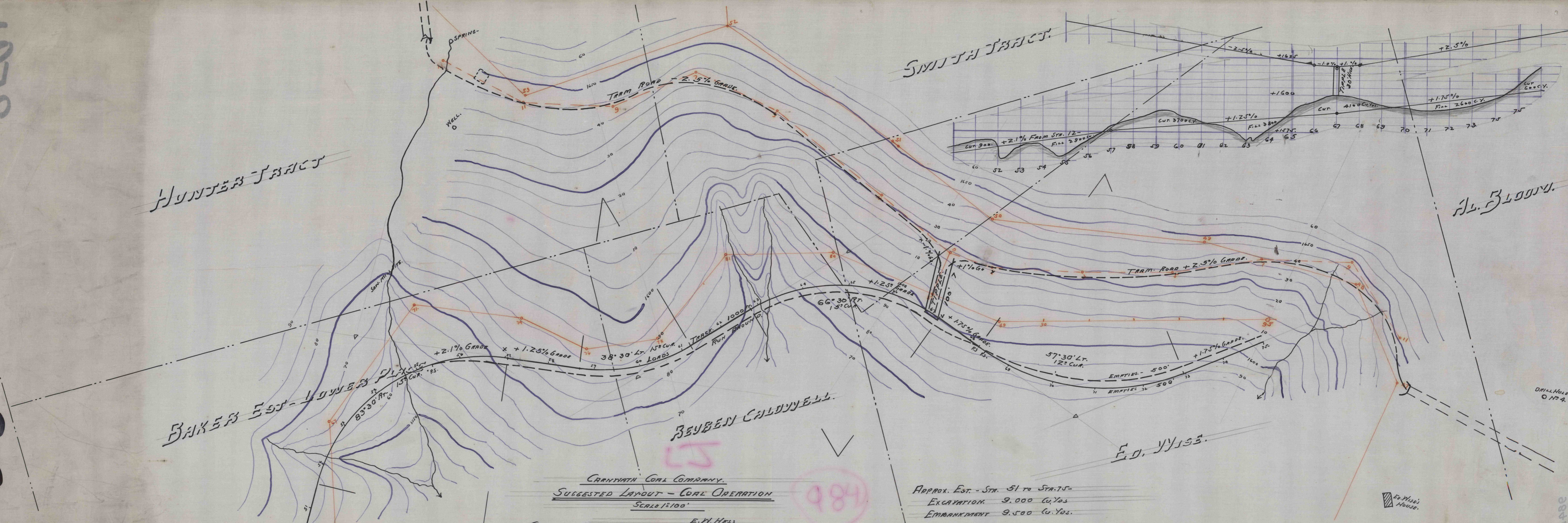
2591

Handwritten notes in Hebrew script, likely identifying the location as Baker East.

Baker East - *באקר אסט*

SMITH TRACT

Bl. Blount



CARNATH COAL COMPANY.  
SUGGESTED LAYOUT - COAL OPERATION  
 SCALE 1"=100'

CLEARFIELD PA.  
 MAR. 29. 1912.

E. V. HESS,  
 ENGINEER.

984

APPROX. EST. - STA. 51 TO STA. 75 -  
 EXCAVATION 9,000 Cu. Yds.  
 EMBANKMENT 9,500 Cu. Yds.

E. D. YLISE.

Ed. Wise's House.

H480