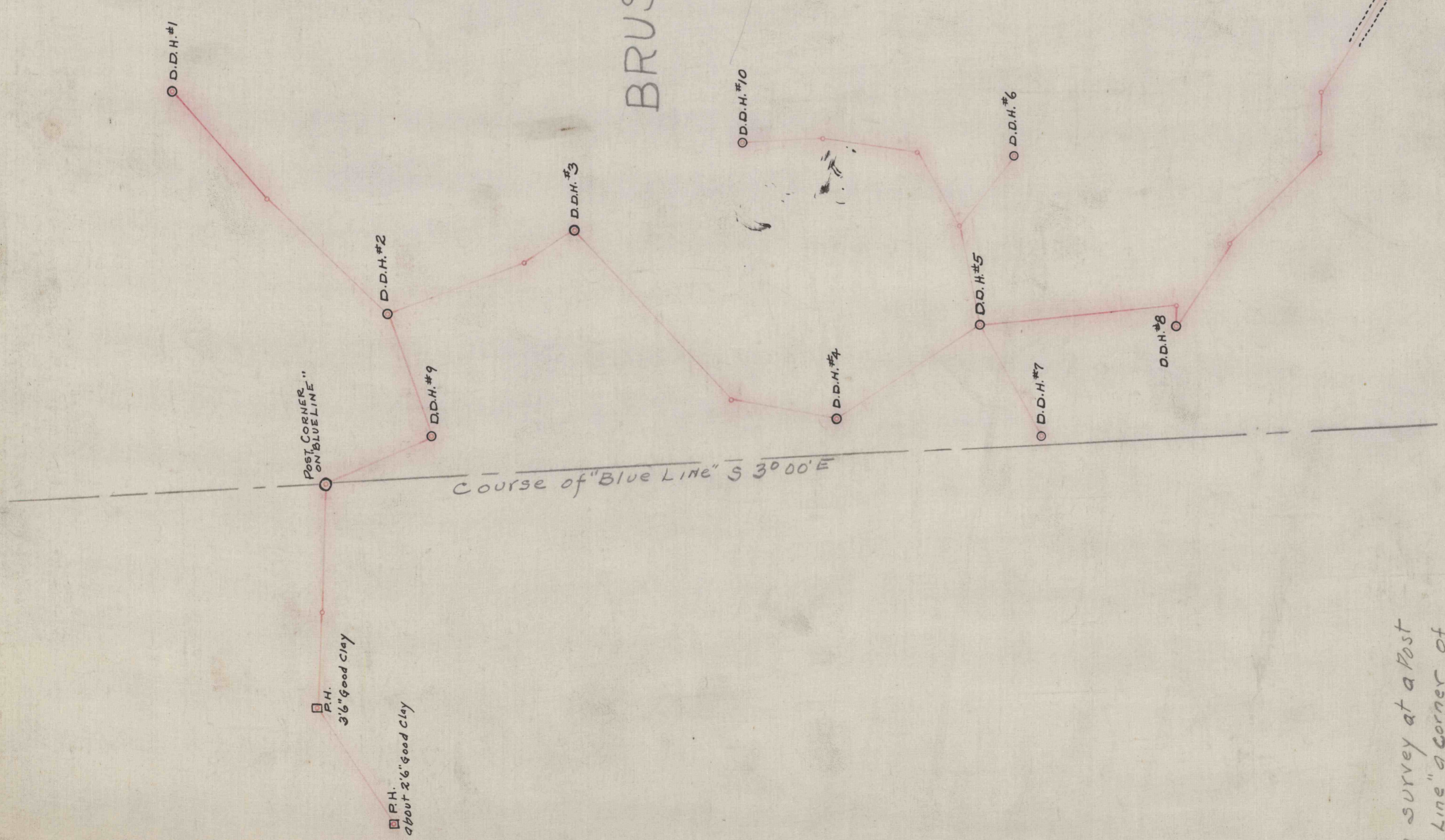


BRUSHY RIDGE



NOTE: - Began survey at a Post corner on "Blue Line" a corner of Land owned by North Bend Fire Brick Co.

CURWENSVILLE, CLEARFIELD COUNTY, PA. ENGINEERING DEPARTMENT	
SURVEY OF DRILL HOLES BRUSHY RIDGE DRILLED BY FOSTER CHAPMAN SEPT 1919 SURVEYED OCT 1919	
DRAWN <i>G.J.R.</i>	SCALE 1" = 100 FT.
CHECKED	DATE <i>Sept. 16, 1919</i>
REFERENCE	ORDER
	<i>QR-2002</i> 25-3-18

Queens Run Division - North Bend