

CAMBRIA MINING & MANUFACTURING COMPANY

THOMAS DONAHUE TRACT
167.95 ACRES
FEE

CAMBRIA M. & M. CO.
MARY J. MCINTOSH TRACT
MINERAL

C.A. HUGHES & CO.
LESSOR
EASTERN GAS & FUEL ASSOCIATES
LESSEE

"E" SEAM COAL
80.67 AC.

EVANS AND THOMAS
JOHN LEAP HEIRS TRACT
121 ACRES MINERAL
E.G. & F.A. LESSEE

EVANS AND THOMAS
JOSEPH BURGOON TRACT
MINERAL
EASTERN GAS AND FUEL ASSOCIATES
LESSEE

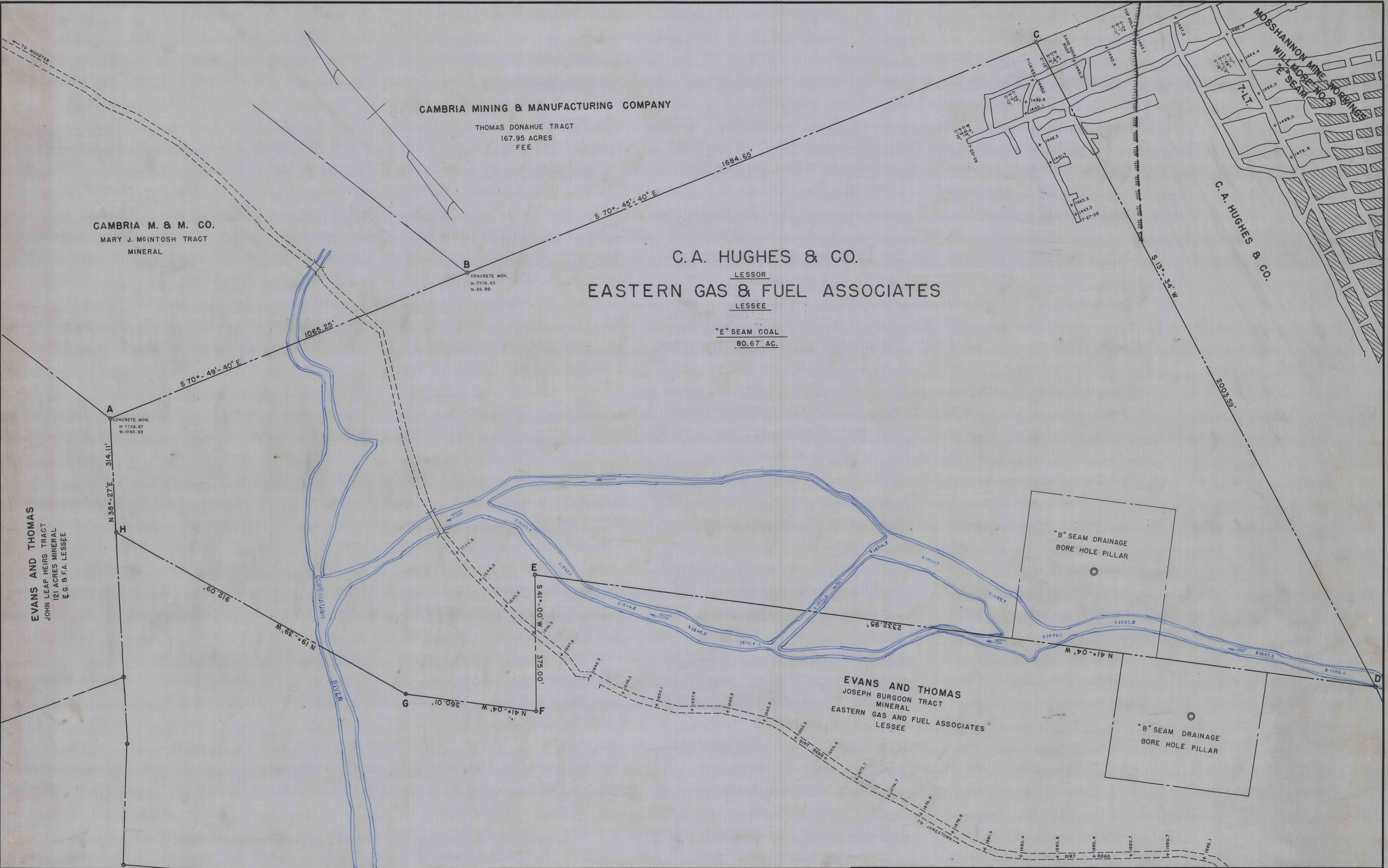
"B" SEAM DRAINAGE
BORE HOLE PILLAR

"B" SEAM DRAINAGE
BORE HOLE PILLAR

CONEWAUGH RIVER

C. A. HUGHES & CO.

MOSSHANNON MINE WORKINGS
WILLMORE NO. 2
"E" SEAM



REFERENCES	DWG. NO.

REV.	DESCRIPTION	CHECKED BY	DATE

NAME	DATE
G. S. GARDNER	8/18/49

EASTERN GAS AND FUEL ASSOCIATES
COAL DIVISION
PITTSBURGH, PA.

SONMAN PROPERTY
TRACT OF "E" SEAM COAL
LEASED BY C.A. HUGHES & CO.
TO E.G. & F.A.

SCALE 1" = 100'
B. M. NO.
SO-700
W-No 118

238