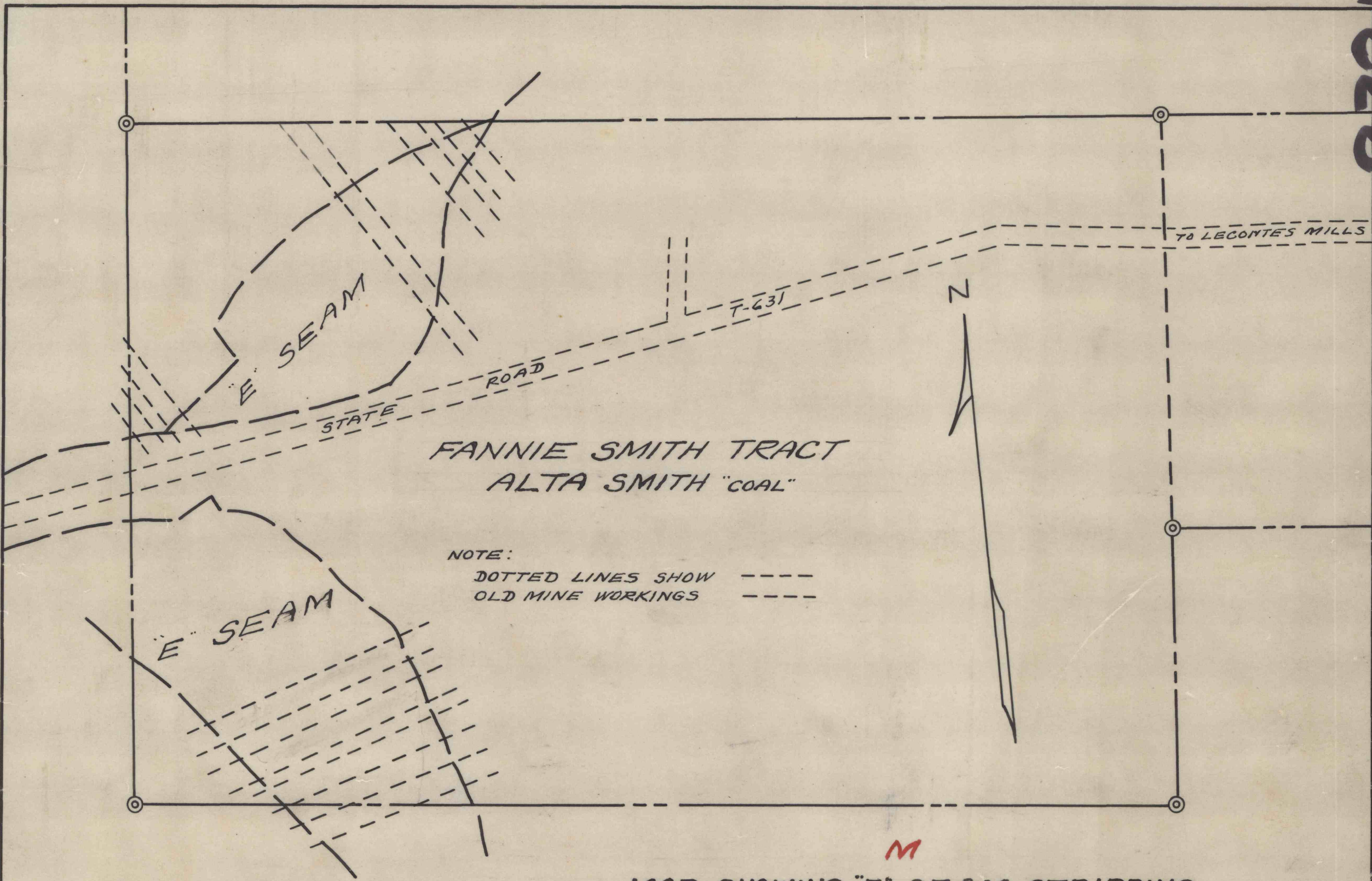


2321



FANNIE SMITH TRACT  
ALTA SMITH "COAL"

NOTE:  
DOTTED LINES SHOW -----  
OLD MINE WORKINGS -----

M

— MAP SHOWING "E" SEAM STRIPPING —  
— OPERATED BY BORON BROS. COAL CO. —  
— ON FANNIE SMITH TRACT —  
— GIRARD TWP. CLEARFIELD COUNTY PA. —  
— SCALE 1"=100' — — MARCH 11, 1955 —  
BERNARD LUCAS & ASSOC. ENGR.

1955

C.D. 290