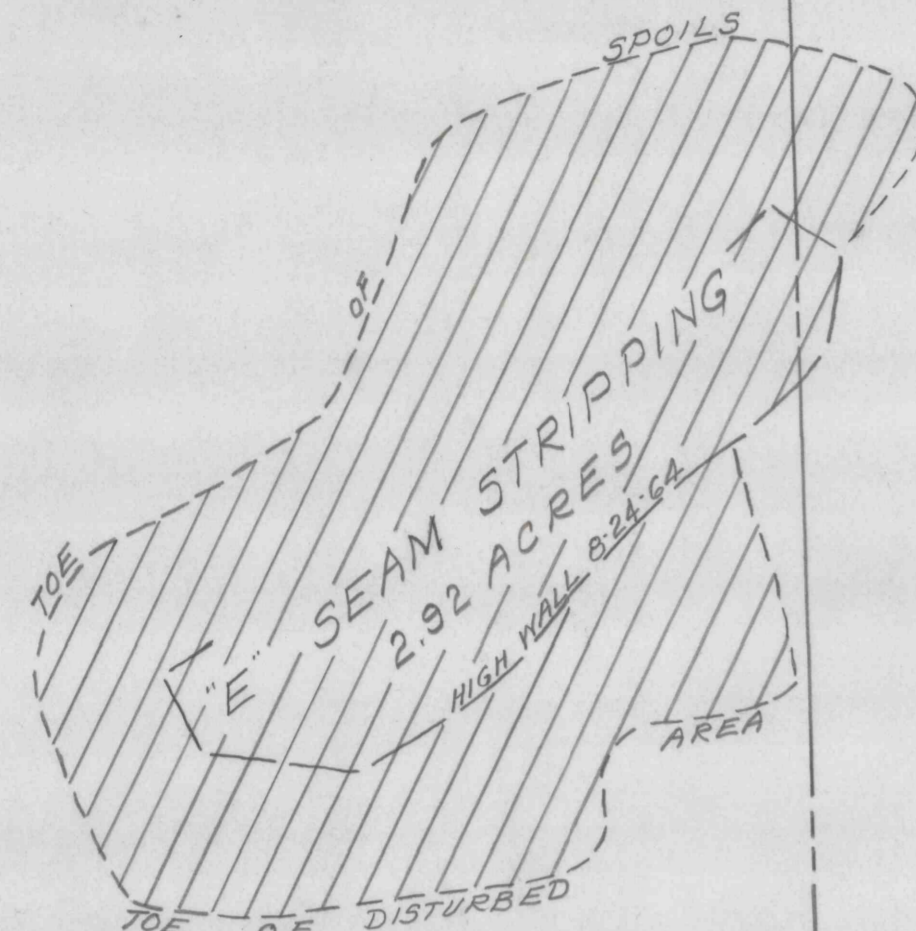


JOHN PROCTER TRACT

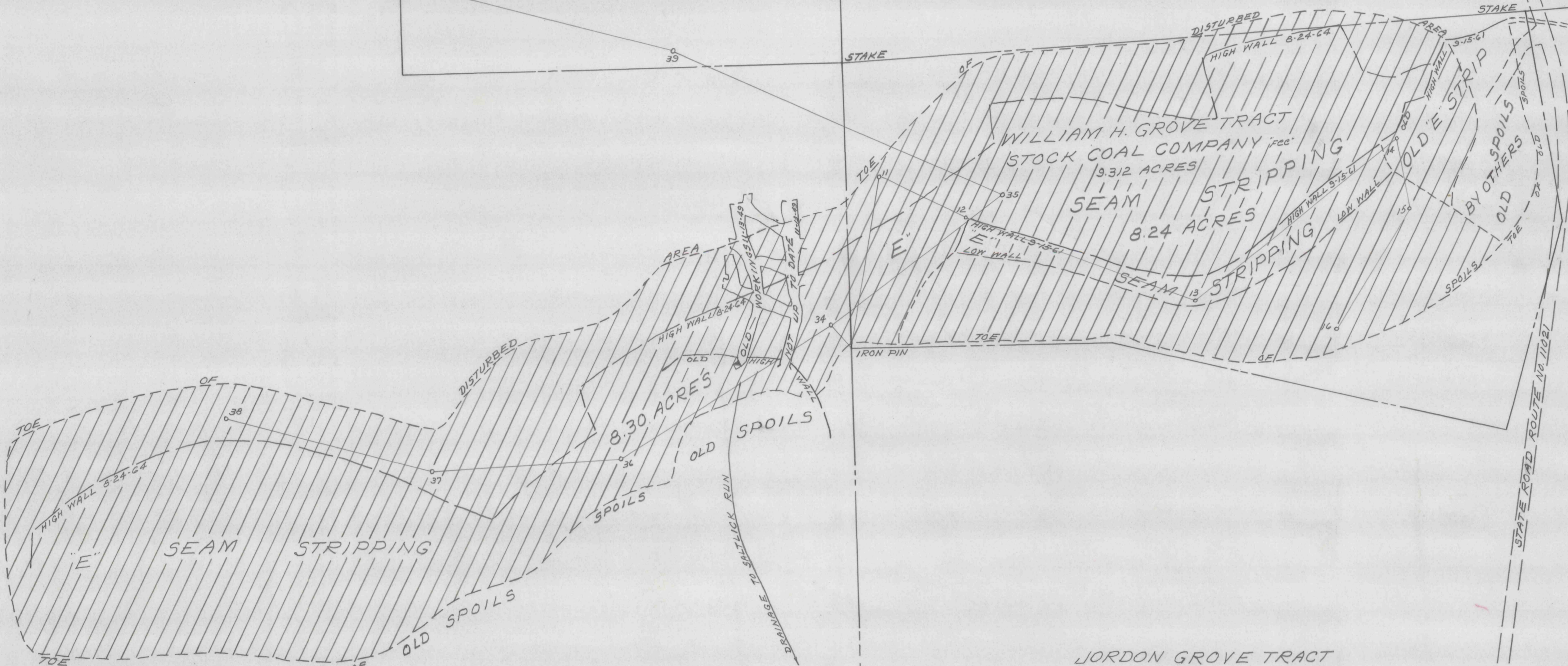


WALTER & JOHN STOCK
7.97 ACRES SURF.
BETHELEM STEEL "minerals"

WILLIAM ROSE TRACT

STATE ROAD ROUTE NO 102

DRAINAGE TO CONEMAUGH RIVER



CALLED YANKEE LAND

NOTE:
RETRACED FROM STOCK COAL COMPANY PRINT BY JOHN H. WELD ENGR. 12655 11-59
8-24-64 BACKFILLED AND LEVELED 19.46 ACRES

M

MAP SHOWING "E" SEAM STRIPPING
OPERATED BY THE YEBERNETSKY COAL COMPANY
EAST TAYLOR TWP. CAMBRIA COUNTY PA.
SCALE 1" = 100' MAY 18, 1961
BERNARD LUCAS ASSOC.

C.D. 590

JOHN DURNO TRACT