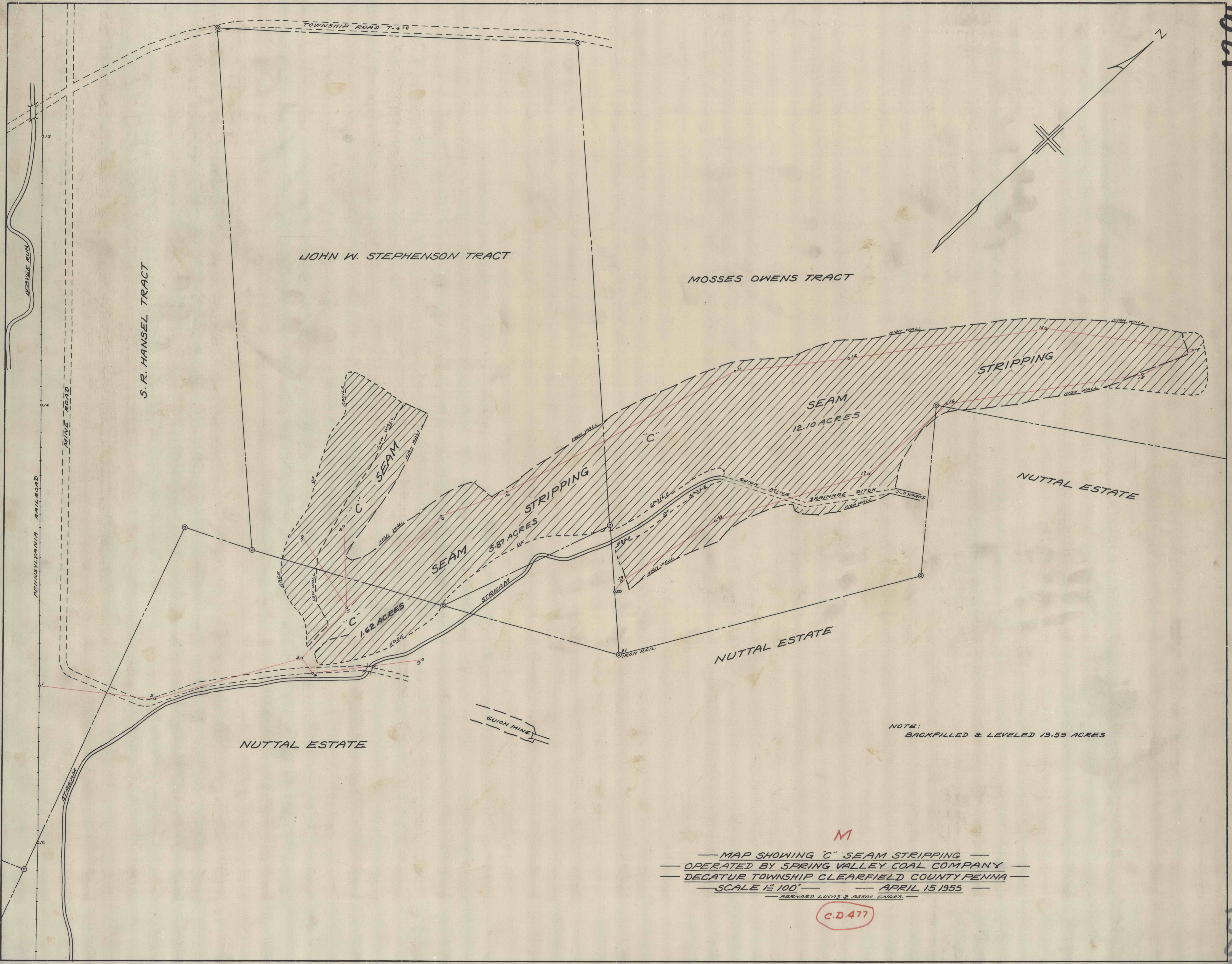


1396



NOTE:
BACKFILLED & LEVELED 19.59 ACRES

M
 — MAP SHOWING "C" SEAM STRIPPING —
 — OPERATED BY SPRING VALLEY COAL COMPANY —
 — DECATUR TOWNSHIP CLEARFIELD COUNTY PENNA —
 — SCALE 1" = 100' — APRIL 15 1955 —
 — BERNARD LUCAS & ASSOC. ENGRS. —

C.D.477

1396