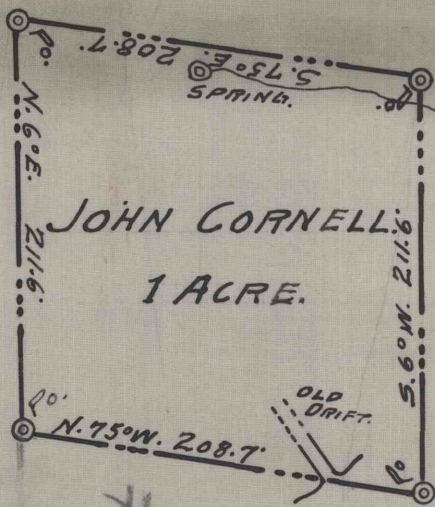


Goss Estate.

Goss Estate.



JOHN CORNELL.
1 ACRE.

JOHN CORNELL.

125' 70' ±

310'

To Houtzdale.

ELIZABETH BAILEY,
(Goss Est.)

TOWNSHIP

ROAD.



store.

JOHN SMEAL.

P
JOHN CORNELL.

SURVEY OF A PLOT OF LAND,

SITUATED IN

WOODWARD TWP., CLEARFIELD, CO., PA.

SCALE: 1" = 100'

CLEARFIELD, PA.
MAY. 6-1919.

OFFICE OF
E. W. HESS, ENGR.

819

JOHN CORNELL.

JOS. JARRETT
EST.

Book. 149

1368