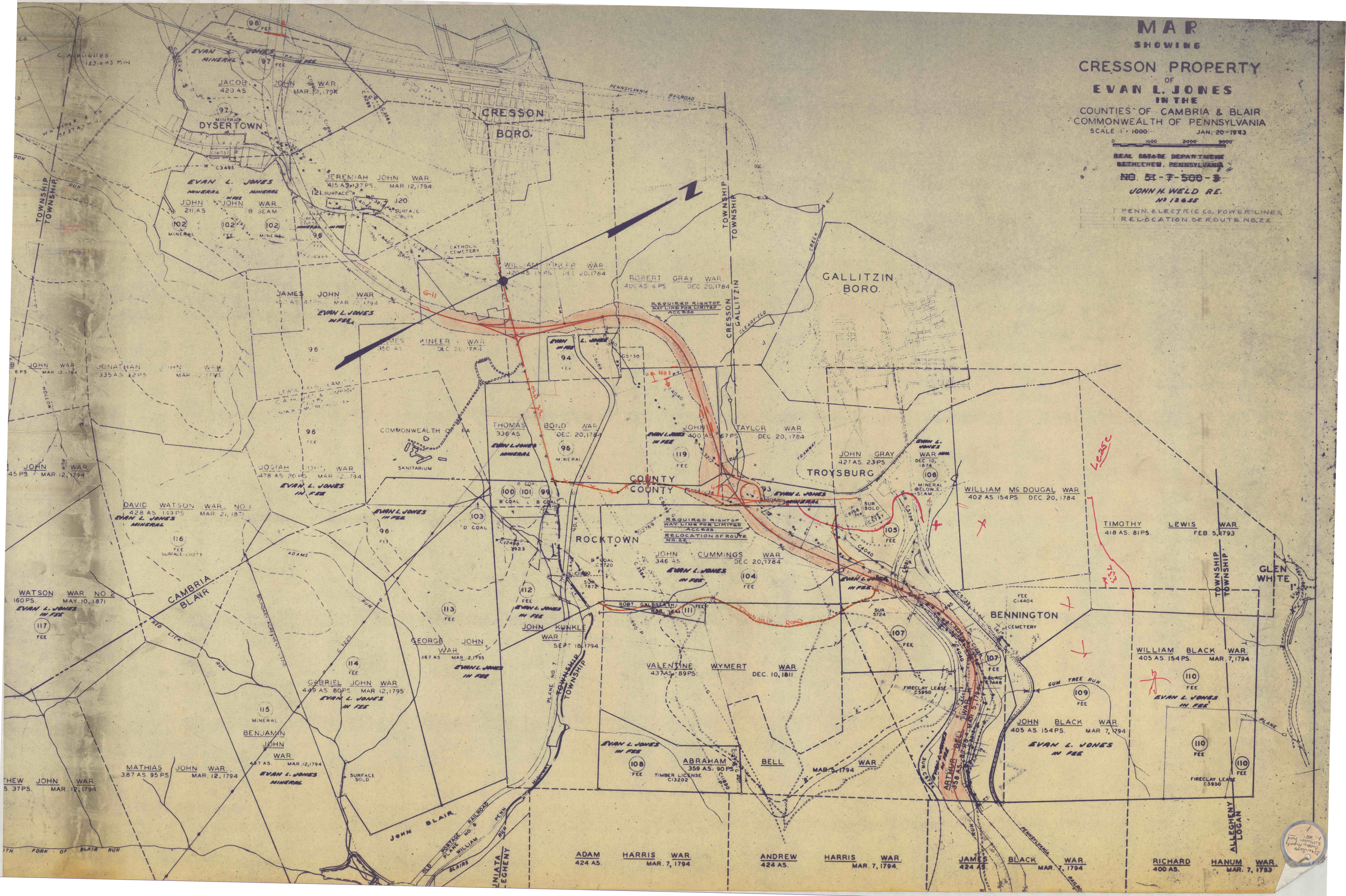


MAP
 SHOWING
CRESSON PROPERTY
 OF
EVAN L. JONES
 IN THE
 COUNTIES OF CAMBRIA & BLAIR
 COMMONWEALTH OF PENNSYLVANIA
 SCALE 1" = 1000' JAN. 20 - 1943

REAL ESTATE DEPARTMENT
 BETHEL, PENNSYLVANIA
 NO. 51-7-500-3
 JOHN H. WELD RE.
 NO. 12655
 PENN. ELECTRIC CO. POWER LINE
 RELOCATION OF ROUTE NO. 22



1222-1-222
 1-222-1-222
 1-222-1-222