

AREAS C.B.C. LEASE WHICH ARE BEEN RELEASED FROM C.B.C. LEASE SHOULD BE RESPONSIBLE TO THE C.B.C. REAR FOR THE WORK C.B.C. HAS TAKEN RESPONSIBILITY TO HAVE CONVEYED AREAS WHICH WERE UNDER RESPONSIBILITY TO C.B.C. LEASE CONVEYED TO ALBERT SVANS

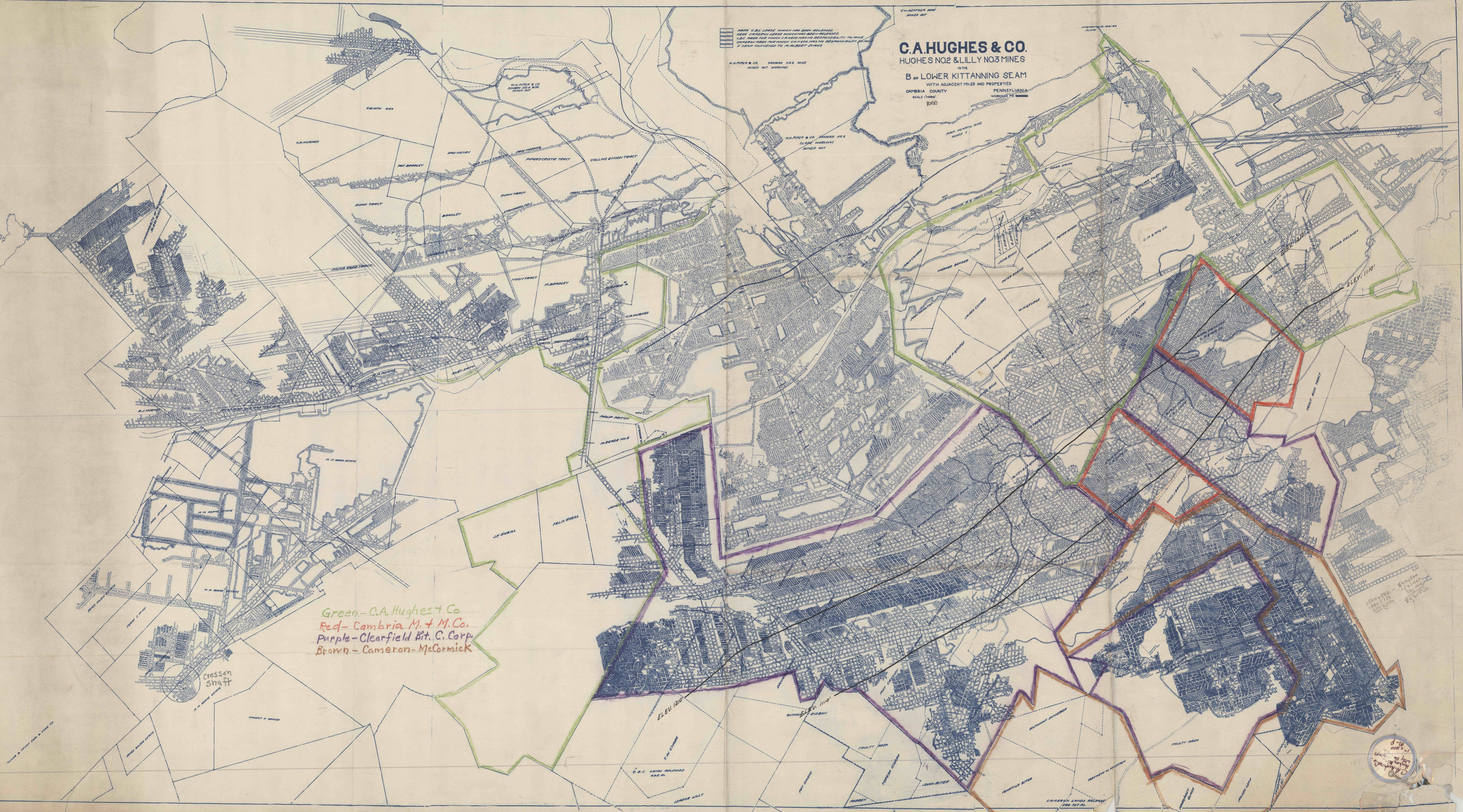
HUGHES & CO. 3000000 NO. 2 MINE MINED OUT WORKINGS

# C.A. HUGHES & CO.

## HUGHES NO. 2 & LILLY NO. 3 MINES

IN THE  
B OF LOWER KITTANNING SEAM  
WITH ADJACENT MINES AND PROPERTIES  
CAMBRIA COUNTY PENNSYLVANIA  
SCALE 1"=400'  
1900

Green - C.A. Hughes & Co.  
Red - Cambria M. & M. Co.  
Purple - Clearfield Bit. C. Corp.  
Brown - Cameron-McCormick



Handwritten notes and a circular stamp in the bottom right corner, likely indicating the map's archival status or ownership.