

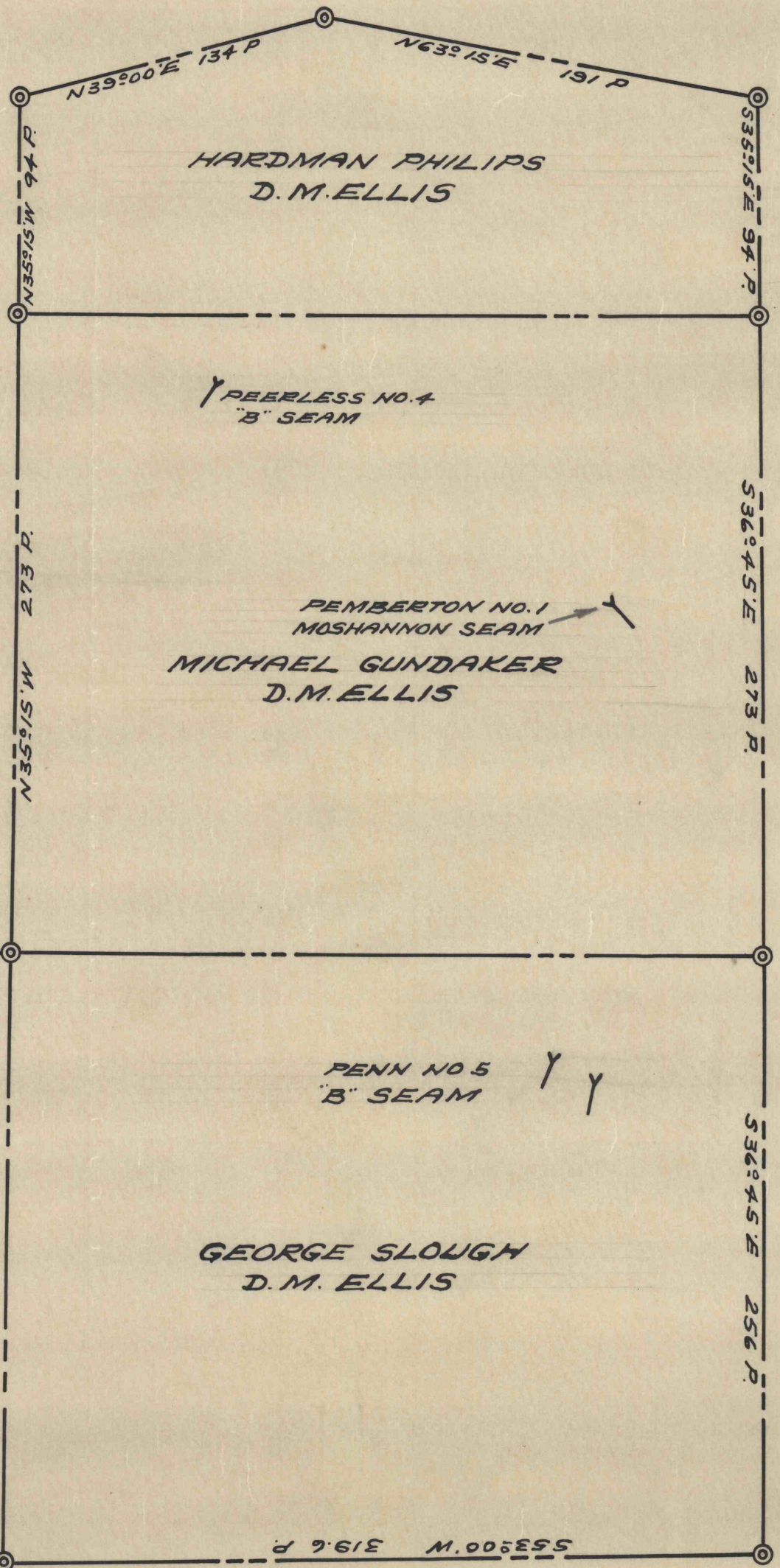
MAP SHOWING PROPERTIES OF D.M. ELLIS  
 LEASED TO DUGAN COAL MINING CO.  
 RUSH TOWNSHIP CENTRE COUNTY PA.  
 SCALE 1" = 1000' JULY 13, 1954

**C.D 435**

NOTE:

THIS MAP WAS RETRACED FROM A MAP  
 ATTACHED TO THE LEASE BETWEEN  
 D.M. ELLIS & DUGAN COAL MINING CO.  
 MAP DATED SEPT. 5 1908

PAUL ZANTZINGER



JOHN GRAFF  
 N 35° 55' E 259 P  
 M. 00° 55' E

JOHN GUNDAKER  
 D.M. ELLIS

GEORGE SLOUGH  
 D.M. ELLIS

PETER BRUTZMAN

DANIEL WITMER

H. PHILIPS

FREDERICK DORSCH

JOHN HAMBRIGHT

1221

1553