

112° 26' 24" W 1080'

PETER BASTESS TRACT
Now Harrison Walker

S 47° 22' W 800'

112° 26' 24" W

1150'

North American Refractories Co.
Cleveland, Ohio

Map of
STATE TRACT CLAY STRIPPING
Near Cleveland Pike

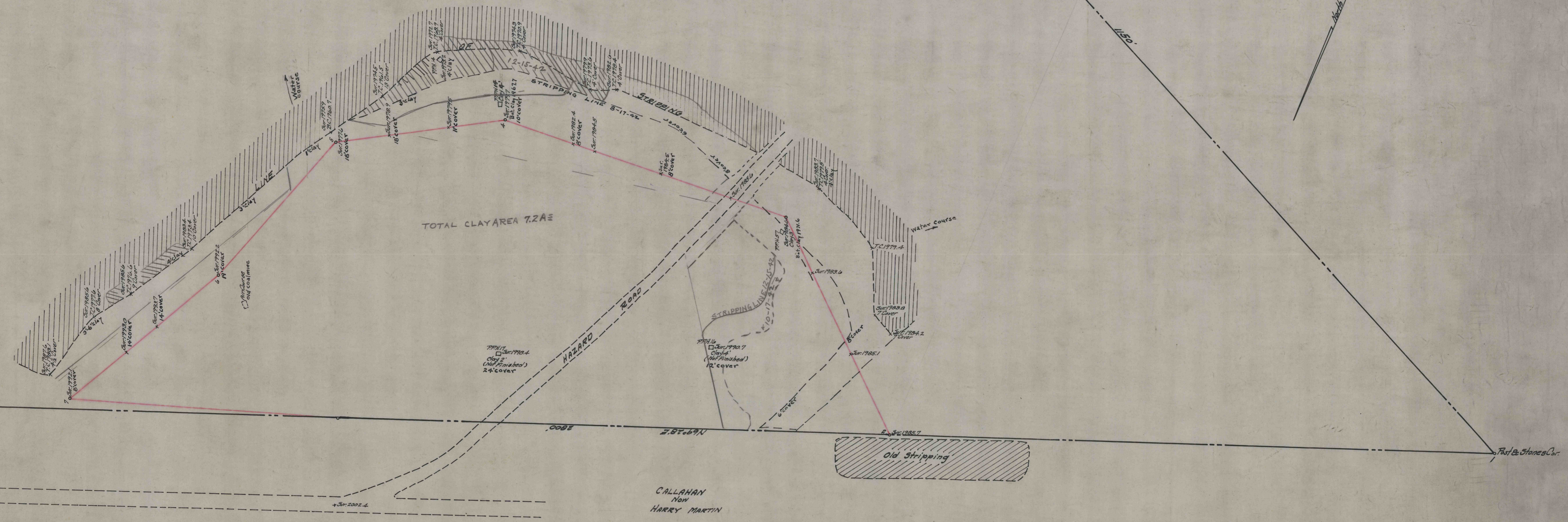
SCALE 1"=50'

May 15, 1942

Index No 20-3-138

118,237

North



TOTAL CLAY AREA 7.2 A.E.

TRAIL
CLAY
(Not finished)
24' cover

TRAIL
CLAY
(Not finished)
12' cover

Old Stripping

CALLAHAN
Now
HARRY MARTIN

Paul B. Stone & Co.