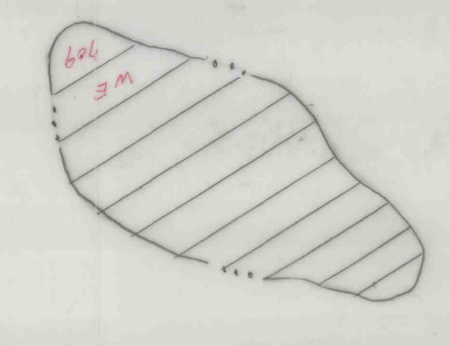
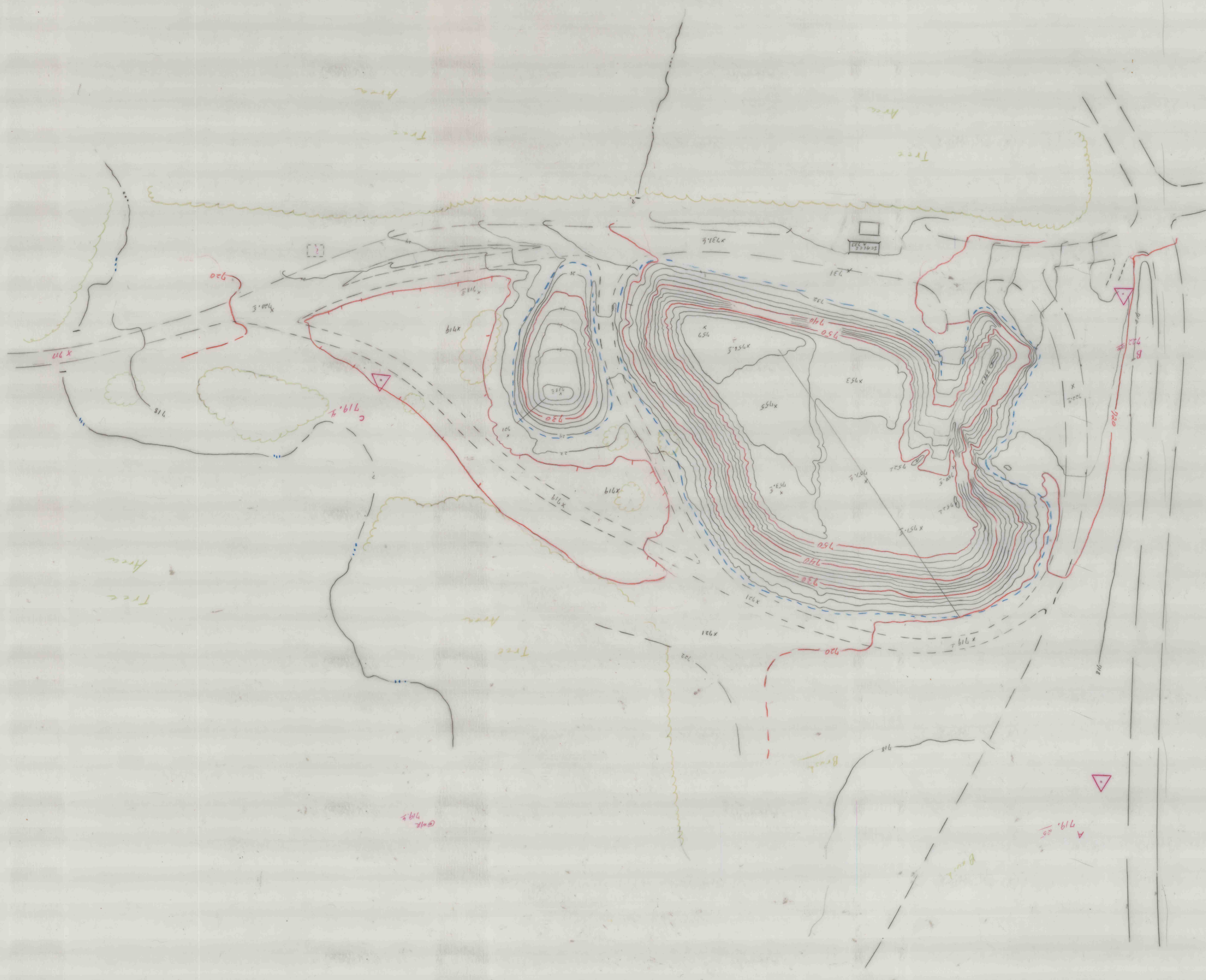


4721-3-02

McGUIRE
20-3-1214



NORTH AMERICAN REFRACTORIES CO.
CLEVELAND-OHIO

Map
of
McGUIRE STOCKPILE (Soft Clay)
Loutre Twp - Audrain County - Mo.

Surveyed by Aerial Photography: Nov. 3, 1964

SCALE - 1" = 40 FT.

INDEX No. 50-3-1574

McGUIRE
20-3-1214

20-3-1214
McGUIRE

McGUIRE
20-3-11