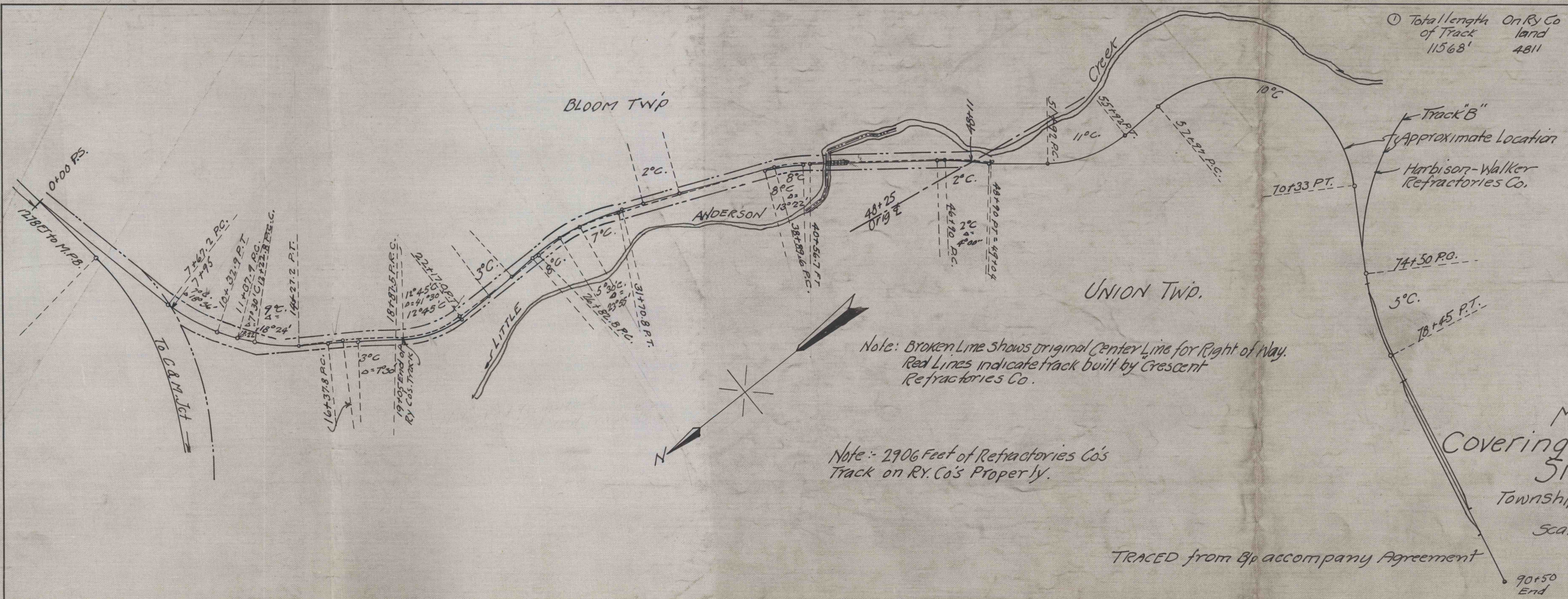


Surveyed by
 Drawn by W.F.O.
 Checked by R.G.S.
 Correct

Office Engr

① Total length of Track	On Ry Co land	Off Ry Co land	Owned by Ry. Co.	Owned by Shipper	Maintained by Ry. Co.	Maintained by Shipper
11568'	4811	6757	1905	9663	0	11563

① NOTE: - Track B 707 feet long constructed by Harbison-Walker Refractories Co. at its expense



Note: Broken Line shows original Center Line for Right of Way.
 Red Lines indicate track built by Crescent Refractories Co.

Note: - 2906 Feet of Refractories Co's Track on Ry. Co's Property.

TRACED from Bp accompany Agreement

C. & M. RY.
 B. R. & P. RY Co. Lessee
 ANDERSON, PA.
 Map to accompany agreement
 Covering location of Crescent Refractories Co's
 Siding on Railway Property
 Townships of Bloom & Union Clearfield County
 State of Pennsylvania.
 Scale: 1-inch = 400 feet
 March 11, 1919.
 Revised Dec. 29, 1922 ①

Approved
 E.H. ROBISON
 Chief Engineer

50-3-372

Their No 14563

50-3-372

Note: - Red from 19+05 to 90+50 end and Track B