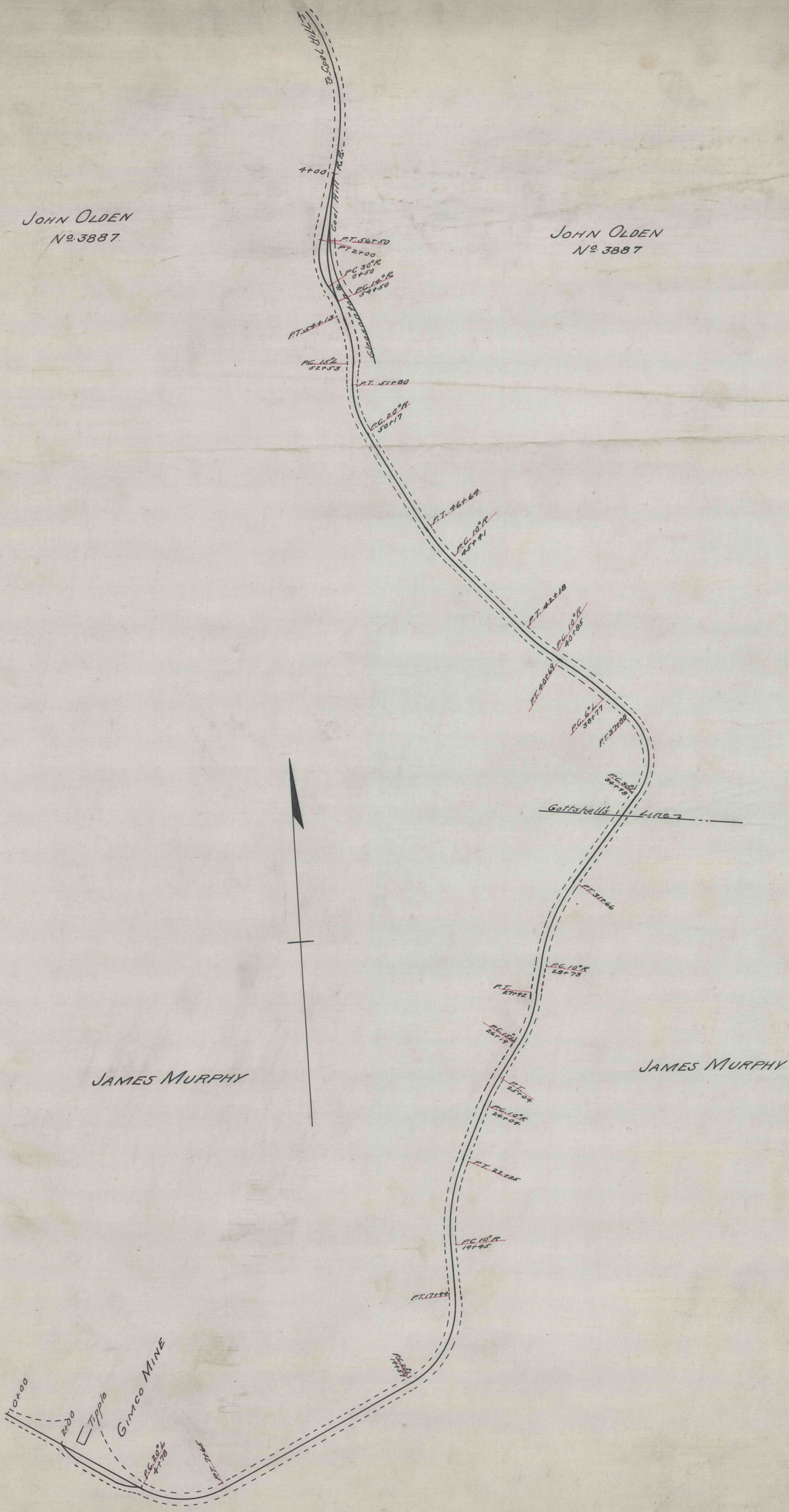


JOHN OLDEN
No. 3887.

JOHN OLDEN
No. 3887



GLEASONTON ^{AND} COAL HILL R.R.
MAP
OF
BRANCH TO GIMCO MINE
GLEASONTON, PENNA.

Oct. 8, 1920.
Surveyed by *J.M. Steman*
Scale 1" = 200 Feet.

25-3-20
OR-206