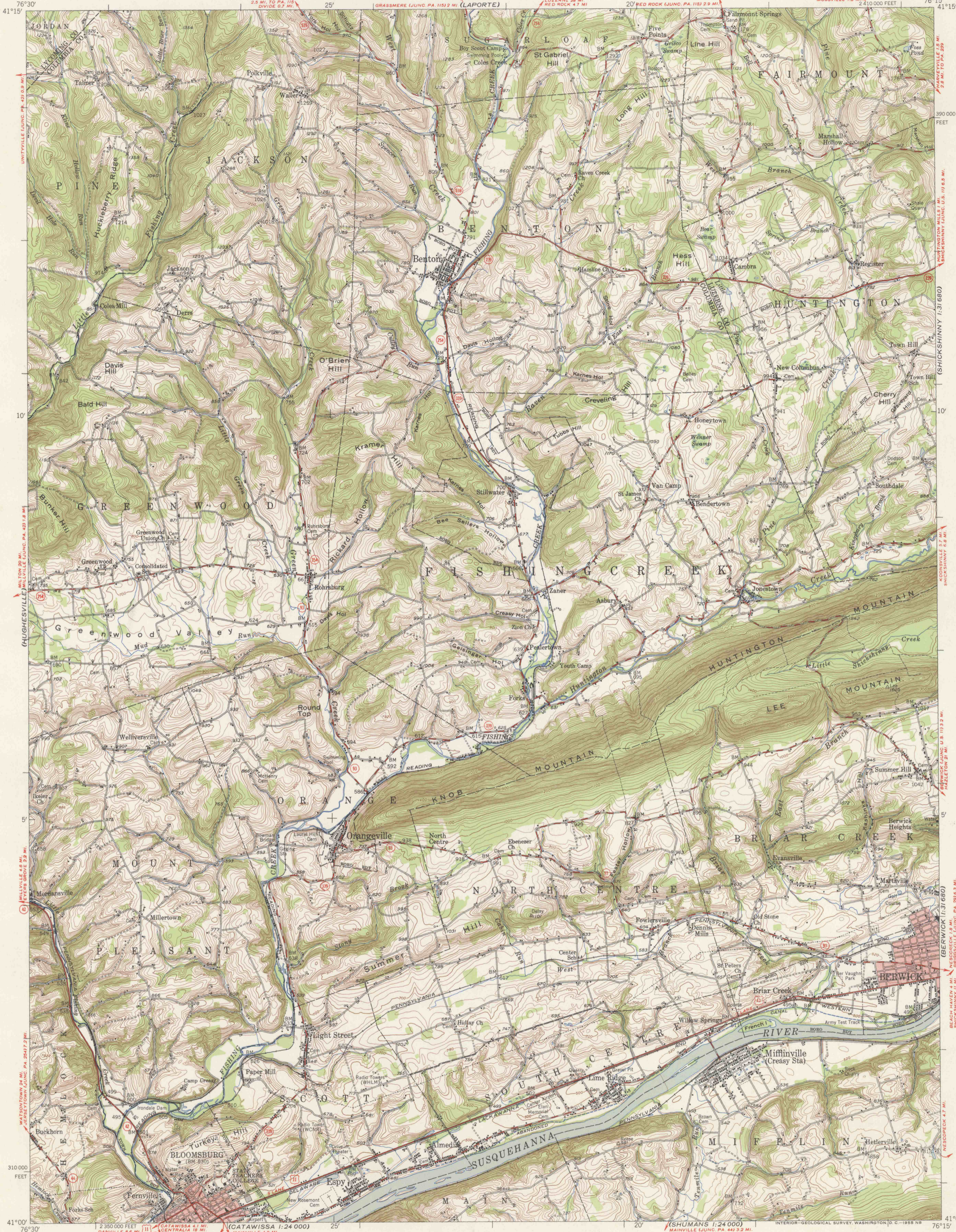


(EAGLES NERE)

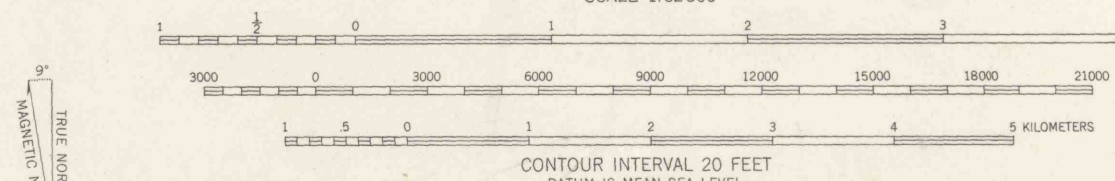
UNITED STATES
DEPARTMENT OF THE INTERIOR
GEOLOGICAL SURVEY

BLOOMSBURG QUADRANGLE
PENNSYLVANIA
15 MINUTE SERIES (TOPOGRAPHIC)

(SWEET VALLEY
1:24,000)



Mapped, edited, and published by the Geological Survey
Control by USGS and USC&GS
Topography from aerial photographs by multiplex methods
Aerial photographs taken 1942. Field check 1944
Culture revised 1953-1954
Polyconic projection. 1927 North American datum
10,000-foot grid based on Pennsylvania coordinate system,
north zone
Unchecked elevations are shown in brown
Red tint indicates areas in which only
landmark buildings are shown



ROAD CLASSIFICATION
Heavy-duty ——— Light-duty ———
Medium-duty ——— Unimproved dirt ———
U. S. Route State Route
This area is also covered by 1:24,000 scale
maps of Stillwater, Benton, Bloomsburg, and
Mifflinville 7 1/2 minute quadrangles
BLOOMSBURG, PA.
N4100-W7615/15

THIS MAP COMPLIES WITH NATIONAL MAP ACCURACY STANDARDS
FOR SALE BY U. S. GEOLOGICAL SURVEY, WASHINGTON 25, D. C.
A FOLDER DESCRIBING TOPOGRAPHIC MAPS AND SYMBOLS IS AVAILABLE ON REQUEST