

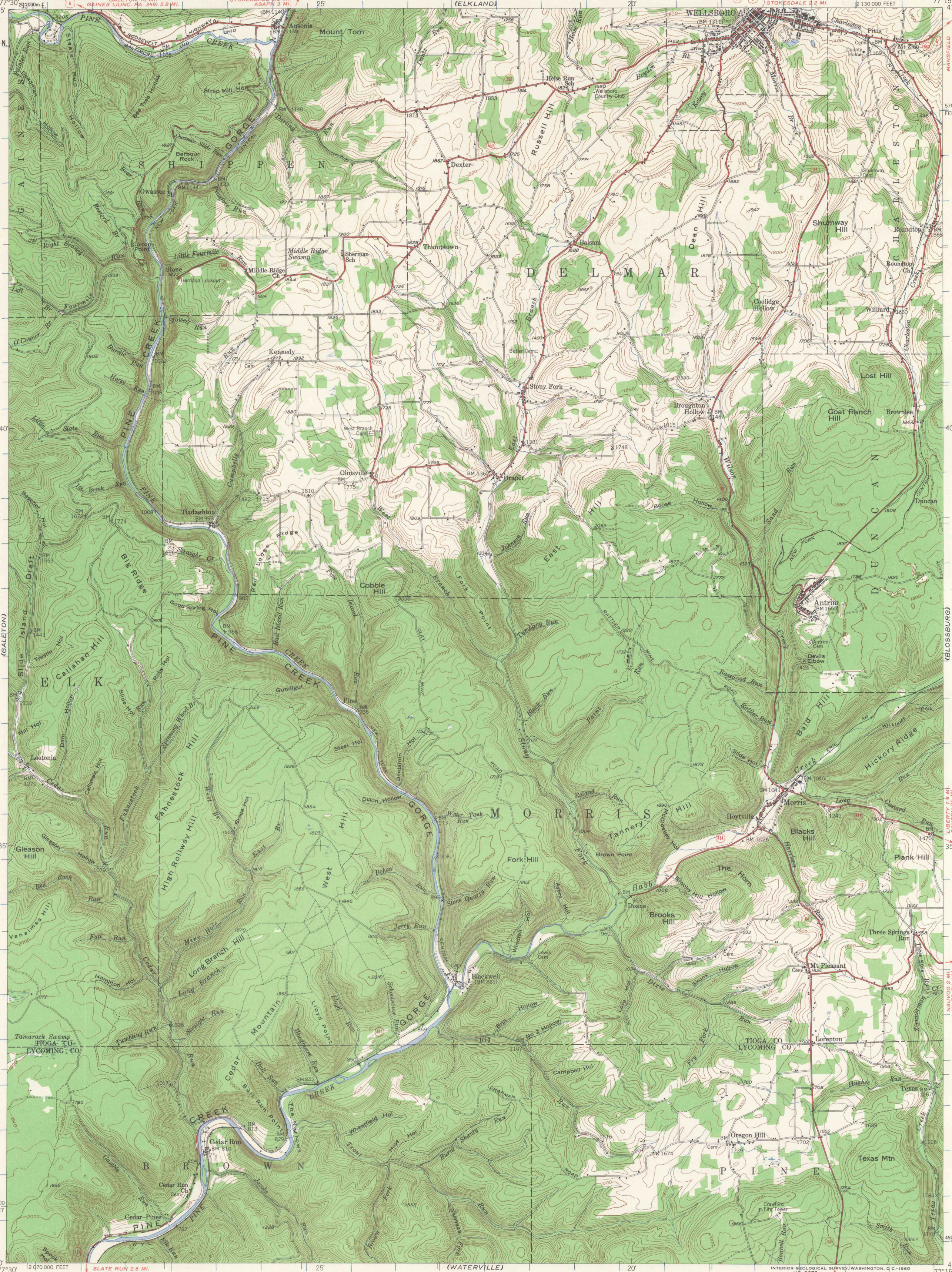
(GAINES)
(GALETON)
(RENOVO EAST)

UNITED STATES
DEPARTMENT OF THE INTERIOR
GEOLOGICAL SURVEY

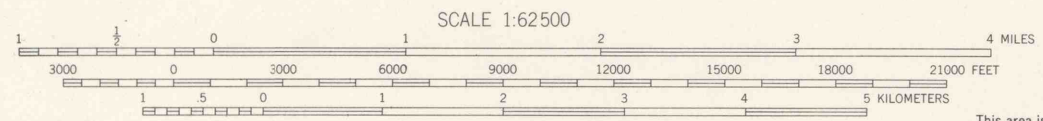
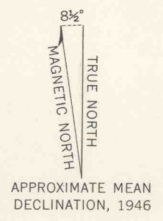
STATE OF PENNSYLVANIA
DEPARTMENT OF INTERNAL AFFAIRS
TOPOGRAPHIC AND GEOLOGIC SURVEY

ANTRIM QUADRANGLE
PENNSYLVANIA
15 MINUTE SERIES (TOPOGRAPHIC)

(TIOGA)
(BLOSSBURG)
(TROUT RUN)



Mapped, edited, and published by the Geological Survey
Control by USGS and USC&GS
Topography from aerial photographs by multiplex methods
Aerial photographs taken 1944. Field check 1946
Polyconic projection, 1927 North American datum
10,000-foot grid based on Pennsylvania coordinate system,
north zone
1000-meter Universal Transverse Mercator grid ticks,
zone 18, shown in blue



CONTOUR INTERVAL 40 FEET
DATUM IS MEAN SEA LEVEL

Heavy-duty ——— Light-duty ———
Medium-duty ——— Unimproved dirt ———
U.S. Route State Route

This area is also covered by 1:24 000 scale maps
of the Antrim, Tadaughton, Cedar Run, and
Morris 7.5 minute quadrangles

THIS MAP COMPLIES WITH NATIONAL MAP ACCURACY STANDARDS
FOR SALE BY U. S. GEOLOGICAL SURVEY, WASHINGTON 25, D. C.
A FOLDER DESCRIBING TOPOGRAPHIC MAPS AND SYMBOLS IS AVAILABLE ON REQUEST

ANTRIM, PA.
N4130-W7715/15