

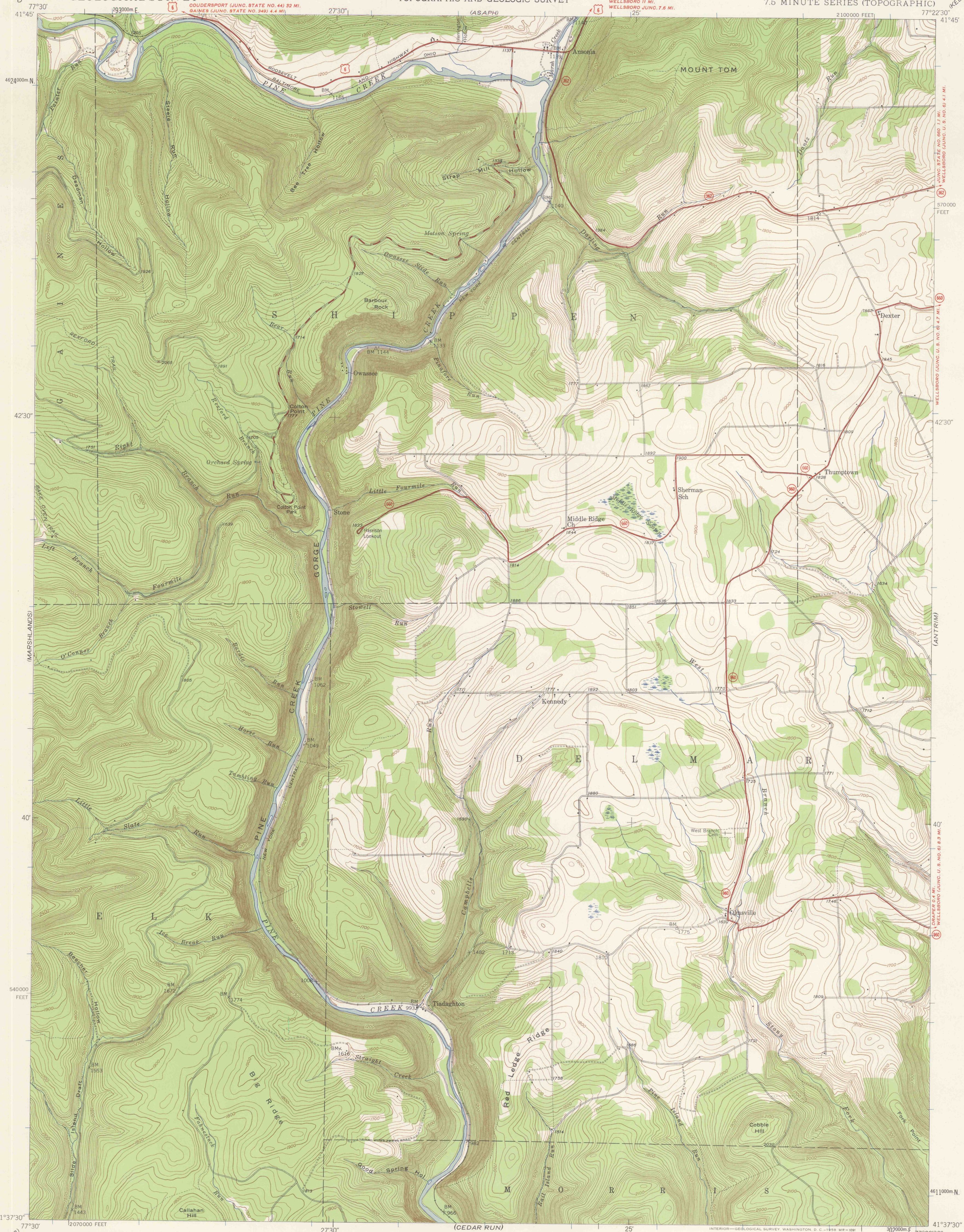
(GAINES)
1:62,500

UNITED STATES
DEPARTMENT OF THE INTERIOR
GEOLOGICAL SURVEY

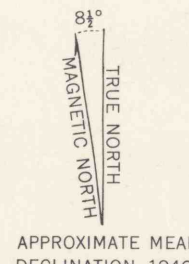
STATE OF PENNSYLVANIA
DEPARTMENT OF INTERNAL AFFAIRS
TOPOGRAPHIC AND GEOLOGIC SURVEY

TIADAGHTON QUADRANGLE
PENNSYLVANIA-TIOGA CO.
7.5 MINUTE SERIES (TOPOGRAPHIC)

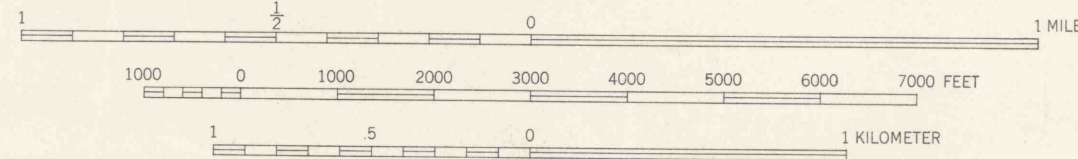
(KEENEYVILLE)



Mapped, edited, and published by the Geological Survey
Control by USGS and USC & GS
Topography from aerial photographs by multiplex methods
Aerial photographs taken 1944. Field check 1946
Polyconic projection. 1927 North American datum
10000 foot grid based on Pennsylvania coordinate system,
North zone
1000-meter Universal Transverse Mercator grid ticks,
zone 18, shown in blue



APPROXIMATE MEAN
DECLINATION, 1946



SCALE 1:24,000
CONTOUR INTERVAL 20 FEET
DATUM IS MEAN SEA LEVEL

ROAD CLASSIFICATION	
HARD-SURFACE ALL WEATHER ROADS	DRY WEATHER ROADS
Heavy-duty LEANE 1 BLANE	Improved dirt
Medium-duty LANE 1 LANE	Unimproved dirt
Loose-surface or narrow hard-surface	-----
U.S. Route	State Route

TIADAGHTON, PA.
N4137.5-W7722.5/7.5