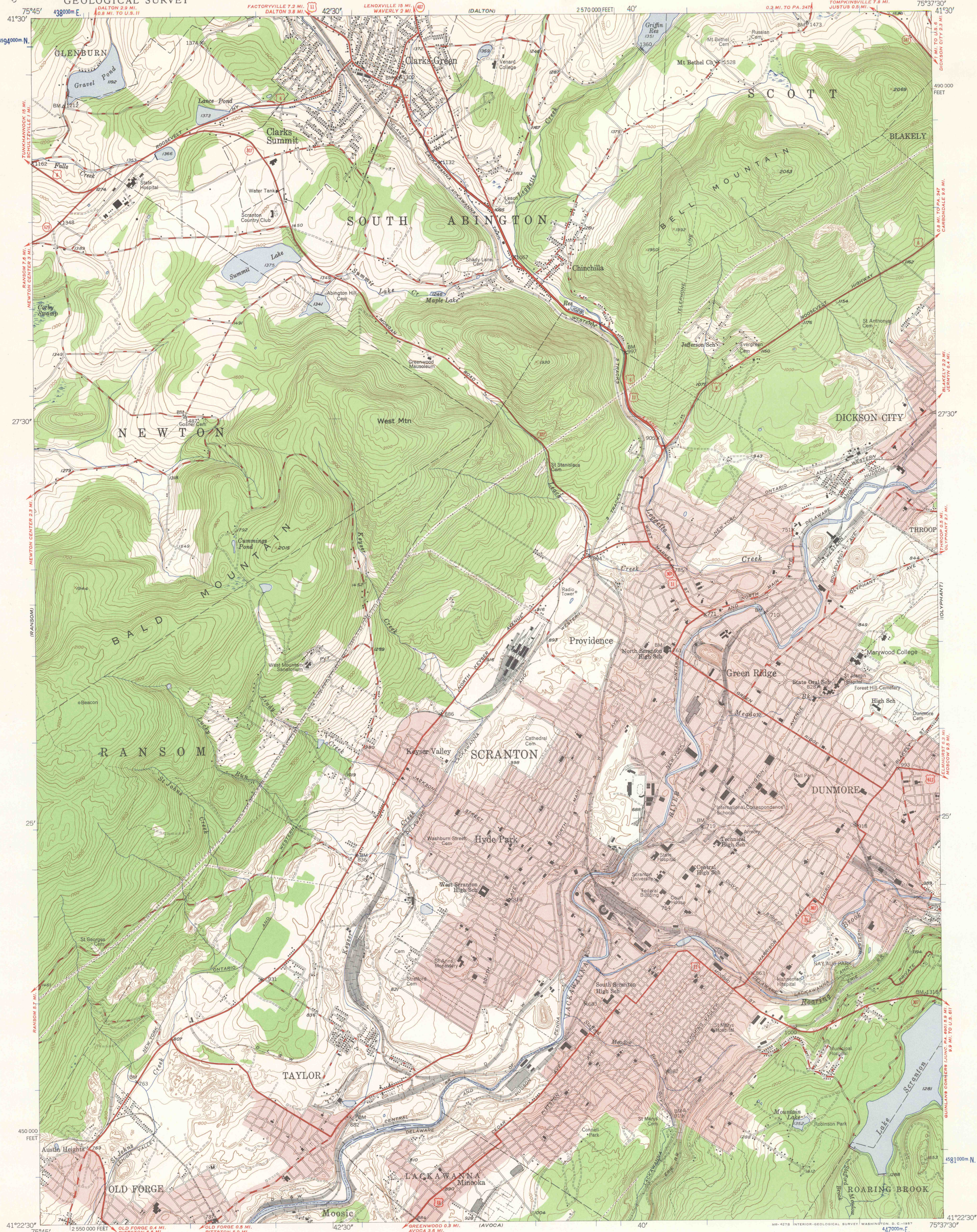


UNITED STATES
DEPARTMENT OF THE INTERIOR
GEOLOGICAL SURVEY

SCRANTON QUADRANGLE
PENNSYLVANIA-LACKAWANNA CO.
7.5 MINUTE SERIES (TOPOGRAPHIC)
NW/4 SCRANTON 15' QUADRANGLE



Mapped, edited, and published by the Geological Survey
Control by USGS and USC&GS

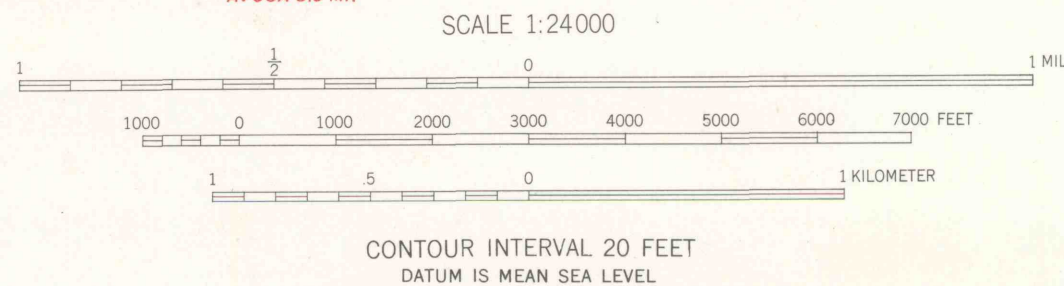
Topography from aerial photographs by multiplex methods
Aerial photographs taken 1942. Field check 1947

Polyconic projection. 1927 North American datum
10,000-foot grid based on Pennsylvania coordinate system,
north zone

Red tint indicates areas in which only
landmark buildings are shown

Contours in strip mine areas compiled from 1942 photography
1000-meter Universal Transverse Mercator grid ticks,
zone 18, shown in blue

APPROXIMATE MEAN
DECLINATION, 1947



THIS MAP COMPLIES WITH NATIONAL MAP ACCURACY STANDARDS
FOR SALE BY U. S. GEOLOGICAL SURVEY, WASHINGTON 25, D. C.
A FOLDER DESCRIBING TOPOGRAPHIC MAPS AND SYMBOLS IS AVAILABLE ON REQUEST

ROAD CLASSIFICATION
HARD-SURFACE ALL WEATHER ROADS DRY WEATHER ROADS
Heavy-duty 4 LANE 1 LANE Improved dirt
Medium-duty 4 LANE 1 LANE Unimproved dirt
Loose-surface, graded, or narrow hard-surface
U. S. Route State Route

SCRANTON, PA.
NW/4 SCRANTON 15' QUADRANGLE
N4122.5-W7537.5/7.5

1947