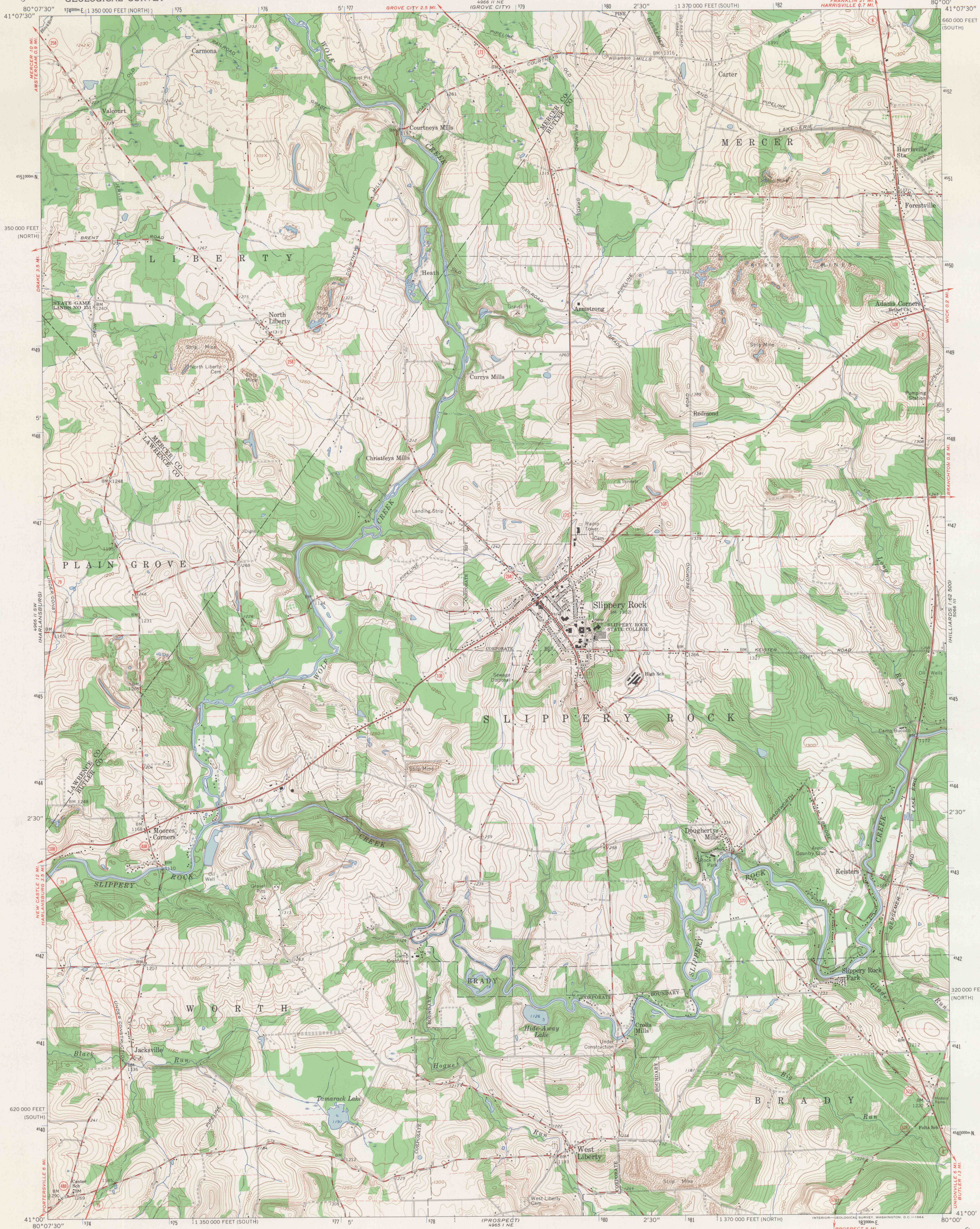


UNITED STATES
DEPARTMENT OF THE INTERIOR
GEOLOGICAL SURVEY

SLIPPERY ROCK QUADRANGLE
PENNSYLVANIA
7.5 MINUTE SERIES (TOPOGRAPHIC)



Mapped, edited, and published by the Geological Survey

Control by USGS and USC&GS

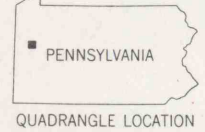
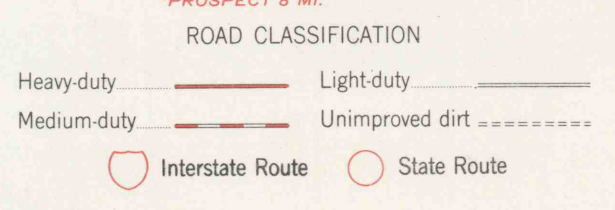
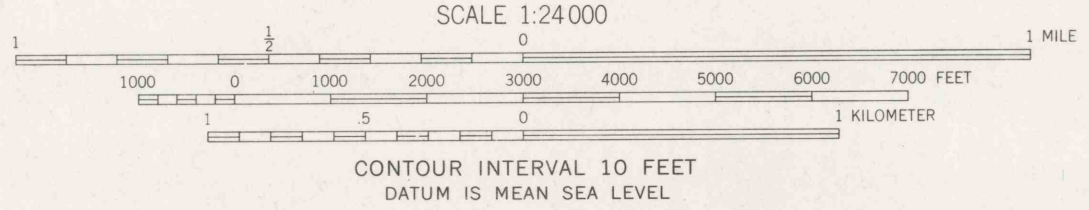
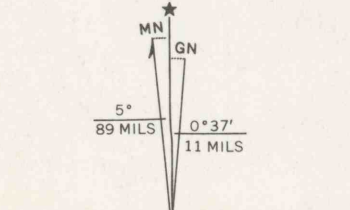
Topography by photogrammetric methods from aerial photographs taken 1958. Field checked 1961

Polyconic projection. 1927 North American datum

10,000-foot grids based on Pennsylvania coordinate system, south and north zones

1000-meter Universal Transverse Mercator grid ticks, zone 17, shown in blue

Fine red dashed lines indicate selected fence and field lines where generally visible on aerial photographs. This information is uncheckd



SLIPPERY ROCK, PA.
SE/4 MERCER 15' QUADRANGLE
N4100—W8000/7.5

1961

AMS 4966 II SE—SERIES V831

THIS MAP COMPLIES WITH NATIONAL MAP ACCURACY STANDARDS
FOR SALE BY U. S. GEOLOGICAL SURVEY, WASHINGTON 25, D. C.
A FOLDER DESCRIBING TOPOGRAPHIC MAPS AND SYMBOLS IS AVAILABLE ON REQUEST