

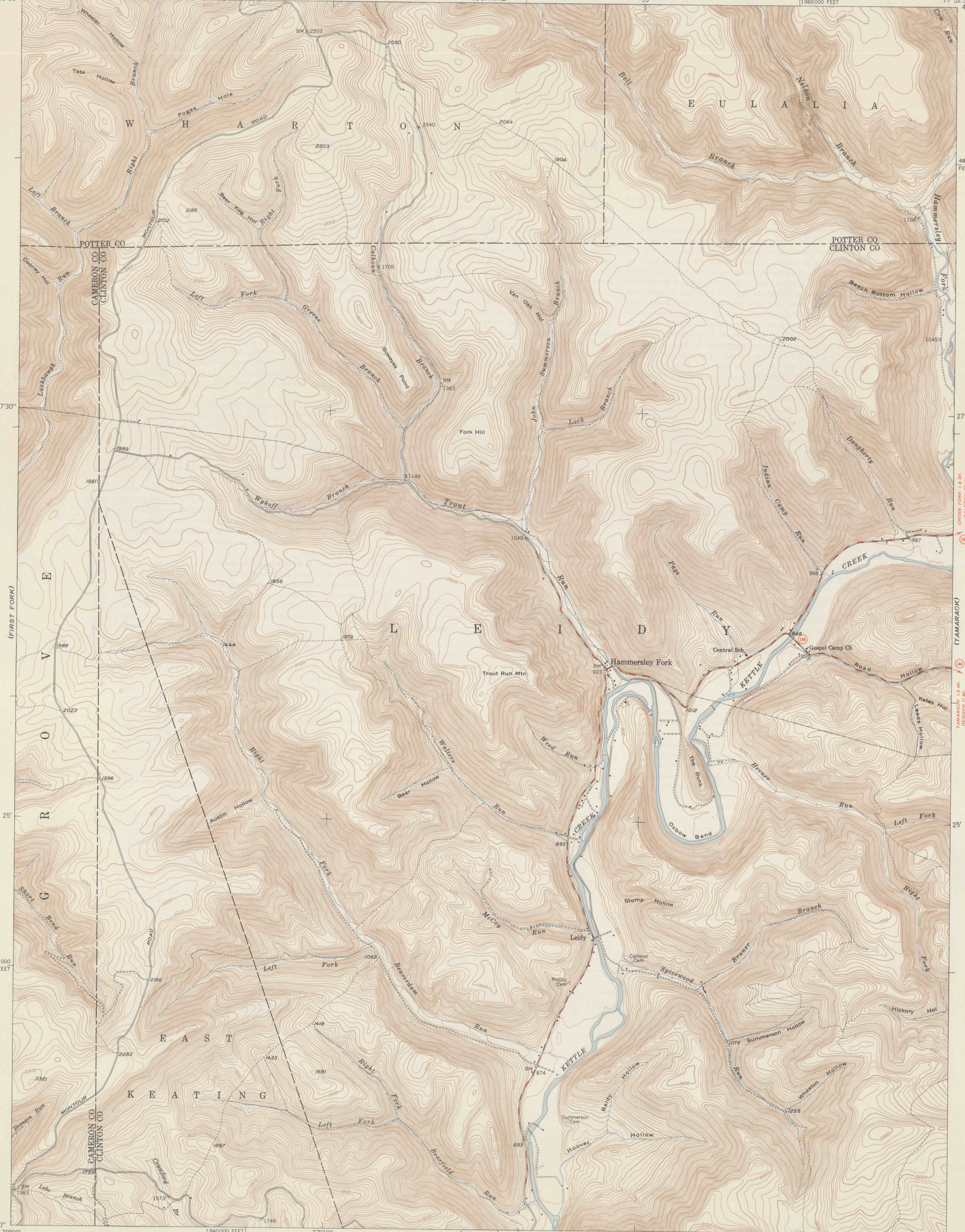
(WHARTON)  
78°00'  
41°30'

UNITED STATES  
DEPARTMENT OF THE INTERIOR  
GEOLOGICAL SURVEY

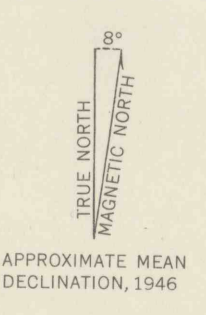
STATE OF PENNSYLVANIA  
DEPARTMENT OF INTERNAL AFFAIRS  
WILLIAM S. LIVENGOD, JR., SECRETARY  
TOPOGRAPHIC AND GEOLOGIC SURVEY  
STANLEY HOLMAN CATHCART, STATE GEOLOGIST  
(CONRAD)

HAMMERSLEY FORK QUADRANGLE  
PENNSYLVANIA  
7.5 MINUTE SERIES (TOPOGRAPHIC)

(SHORT RUN)  
77°52'30"  
41°30'

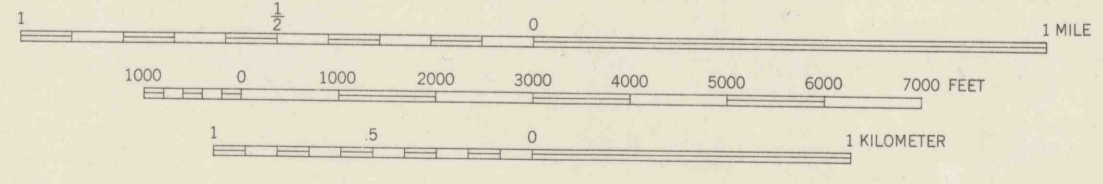


Mapped, edited, and published by the Geological Survey  
Control by USGS  
Topography from aerial photographs by multiplex methods  
Aerial photographs taken 1944 Field check, 1946  
Polyconic projection. 1927 North American datum  
10 000-foot grid based on Pennsylvania coordinate system,  
North zone



APPROXIMATE MEAN  
DECLINATION, 1946

SCALE 1:24000



CONTOUR INTERVAL 20 FEET  
DATUM IS MEAN SEA LEVEL

ROAD CLASSIFICATION

HARD-SURFACE ALL WEATHER ROADS	DRY WEATHER ROADS
Heavy-duty - 4 LANE LANE	Improved dirt
Medium-duty - 4 LANE LANE	Unimproved dirt
Loose-surface, graded, or narrow hard-surface	
U. S. Route	State Route

HAMMERSLEY FORK, PA.  
N4122.5-W7752.5/7.5

PRINTED 1948

THIS MAP COMPLIES WITH NATIONAL MAP ACCURACY STANDARDS

FOR SALE BY U. S. GEOLOGICAL SURVEY, WASHINGTON 25, D. C.

(SINEMAHOING)

(TAMARACK)  
77°52'30"  
41°22'30'