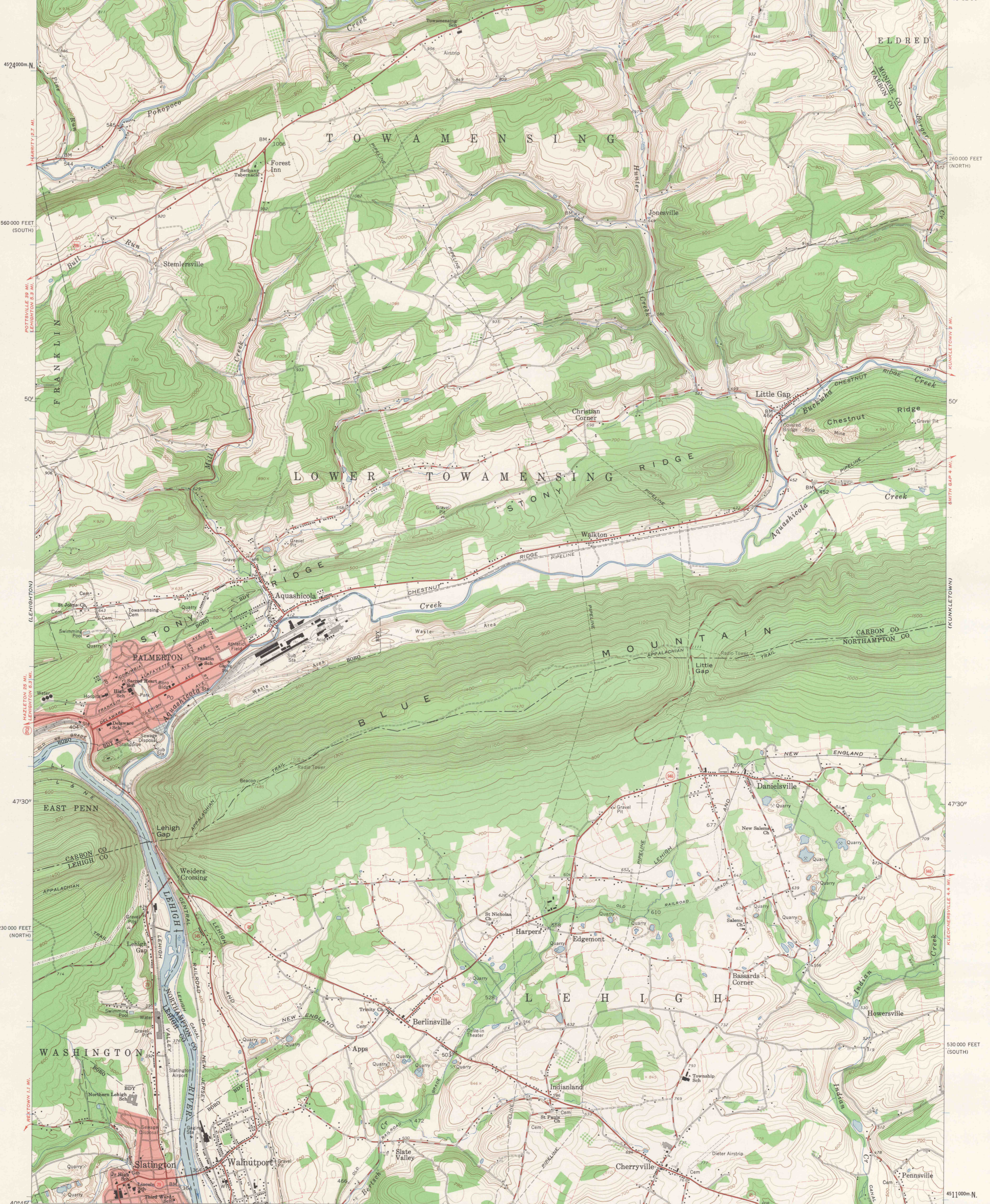


75°37'30" 488000m E 2590 000 FEET (SOUTH) WILD CREEK RESERVOIR 4.5 MI. 35' (POHOPOCO MOUNTAIN) 1760000000 33 MI. 32'30" 2620000 FEET (NORTH) 75°30' 40°52'30"

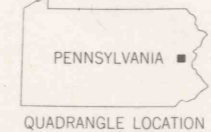
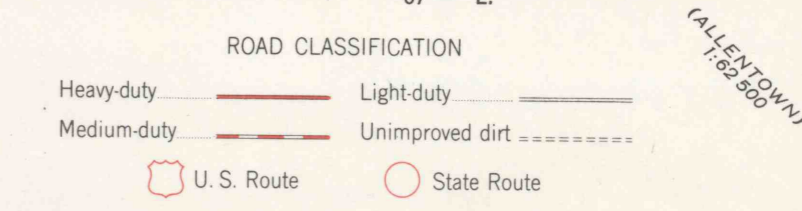
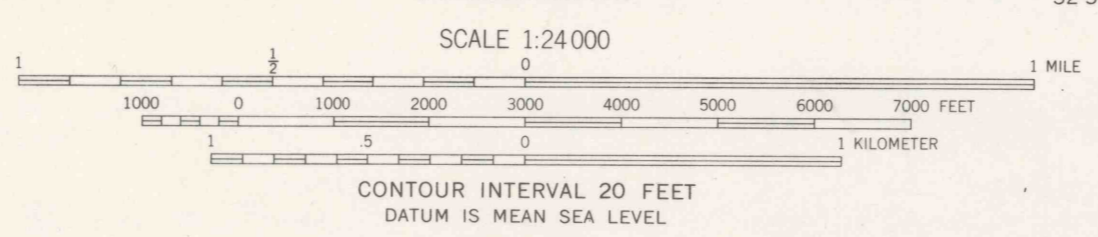


Mapped, edited, and published by the Geological Survey
Control by USGS and USC&GS

Topography from aerial photographs by photogrammetric methods
Aerial photographs taken 1951-1952. Field check 1960

Polyconic projection, 1927 North American datum
10,000-foot grids based on Pennsylvania coordinate system,
north and south zones
1000-meter Universal Transverse Mercator grid ticks,
zone 18, shown in blue

Fine red dashed lines indicate selected fence and field lines where
generally visible on aerial photographs. This information is unchecked
Red tint indicates areas in which only landmark buildings are shown



THIS MAP COMPLIES WITH NATIONAL MAP ACCURACY STANDARDS
FOR SALE BY U.S. GEOLOGICAL SURVEY, WASHINGTON 25, D. C.
A FOLDER DESCRIBING TOPOGRAPHIC MAPS AND SYMBOLS IS AVAILABLE ON REQUEST

PALMERTON, PA.
SE 1/4 LEHIGHION 15' QUADRANGLE
N 4045-W 7530/7.5

1960