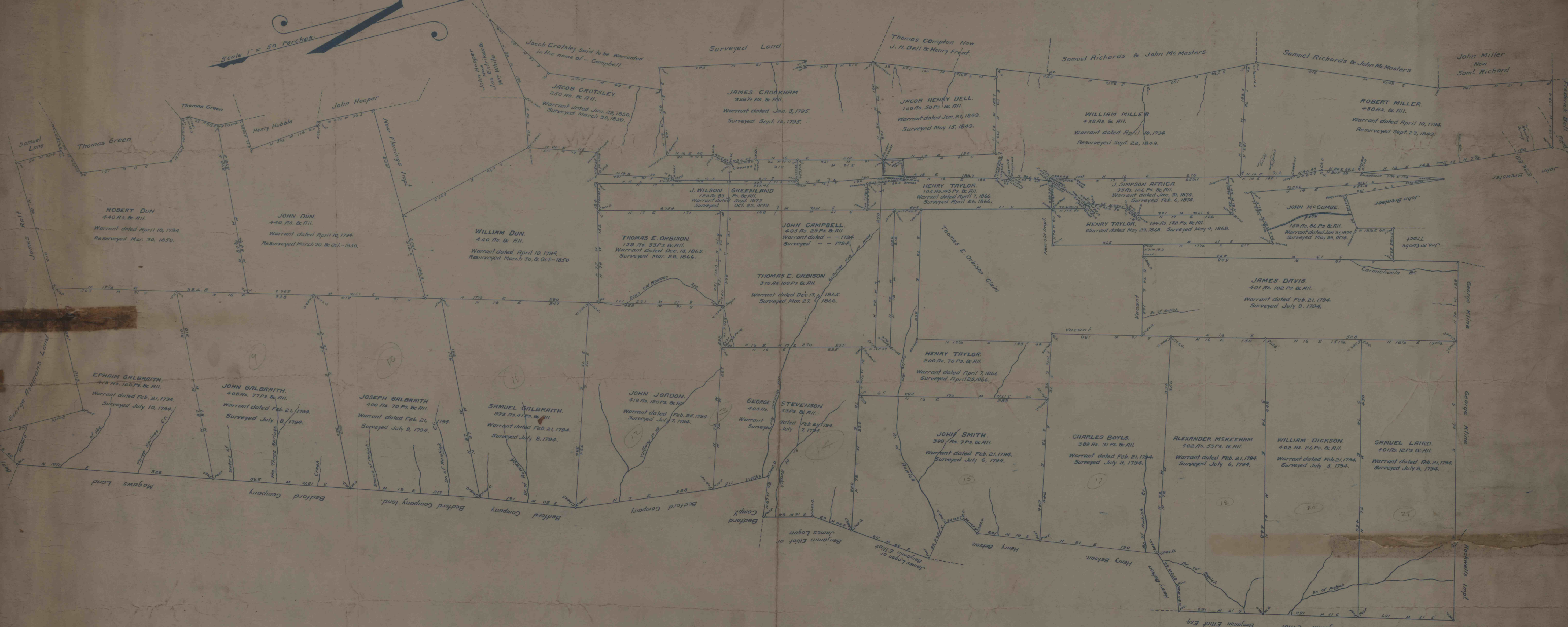


Scale 1" = 50 Perches



A CONNECTED DRAFT of twenty-nine tracts of land situated on Jacks Mountain in Cass and Cromwell Townships, Huntingdon County; the warrants and surveys bearing date respectively as above set forth; constructed from and compared with the original drafts remaining on file in the Department of Internal Affairs of Pennsylvania.

IN TESTIMONY whereof, I have hereunto set my hand and caused the seal of the said Department to be affixed, at Harrisburg, Pennsylvania, the twenty-eighth day of June, Anno Domini, 1827.



James B. Craig  
Deputy Secretary of Internal Affairs.