

Wt. No. 2005
 Wt. No. 3595
 Wt. No. 3588

Wt. No. 2006
 Wt. No. 3591
GEORGE ROBERTS & OTHERS
 1020 as. 60 ps. & all. A-61-173
 Wt. Jan. 4, 1793. Sd. July 7, 1794
 Pat. George Roberts & Others
 Dec. 10, 1795 P-26-392

Wt. No. 2008
GEO. ROBERTS & SAM. M. FOX
 1020 as. 60 ps. & all. A-61-285
 Wt. Oct. 15, 1792. Sd. July 3, 1794
 Pat. George Roberts et. al.
 Dec. 11, 1795 P-26-390

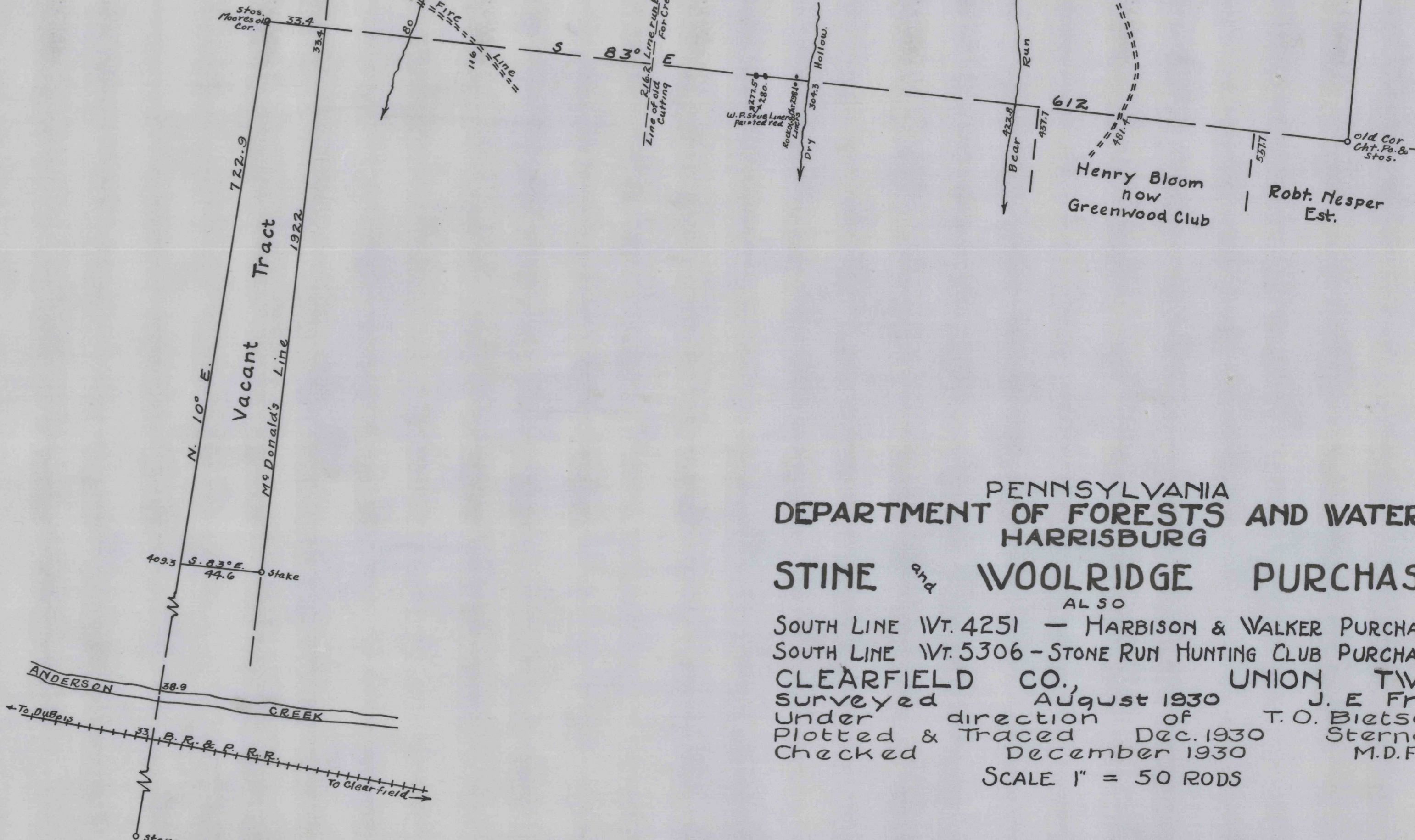
Wt. No. 3596
GEORGE ROBERTS & OTHERS
 1020 as. 60 ps. & all. A-61-282
 Wt. Jan. 4, 1794. Sd. July 3, 1794
 Pat. George Roberts et. al.
 Dec. 11, 1795 P-27-238

Wt. No. 3608

Wt. No. 3579

Wt. No. 4251

Wt. No. 4252



PENNSYLVANIA
 DEPARTMENT OF FORESTS AND WATERS
 HARRISBURG
STINE and WOOLRIDGE PURCHASE
 ALSO
 SOUTH LINE Wt. 4251 - HARBISON & WALKER PURCHASE
 SOUTH LINE Wt. 5306 - STONE RUN HUNTING CLUB PURCHASE
 CLEARFIELD CO. UNION TWP
 surveyed August 1930 J. E. Fry
 under direction of T. O. Bietsch
 Plotted & Traced Dec. 1930 M.D.F.
 Checked December 1930 M.D.F.
 SCALE 1" = 50 RODS

NORTH AMERICAN REFRACTORIES CO.
 1012 NATIONAL CITY - EAST 6TH BUILDING
 CLEVELAND, 14, OHIO

MAP SHOWING DEPARTMENT OF FORESTS & WATERS STINE & WOOLRIDGE PURCHASE UNION TWP, CL'FD CO., PA.

DRAWN CHECKED
 SCALE 1" = 50 RODS DATE 1-9-57
 50-3-1340