

NORTH AMERICAN REFRACTORIES CO.

1012 NATIONAL CITY BANK BUILDING
CLEVELAND, OHIO

ENV. No.

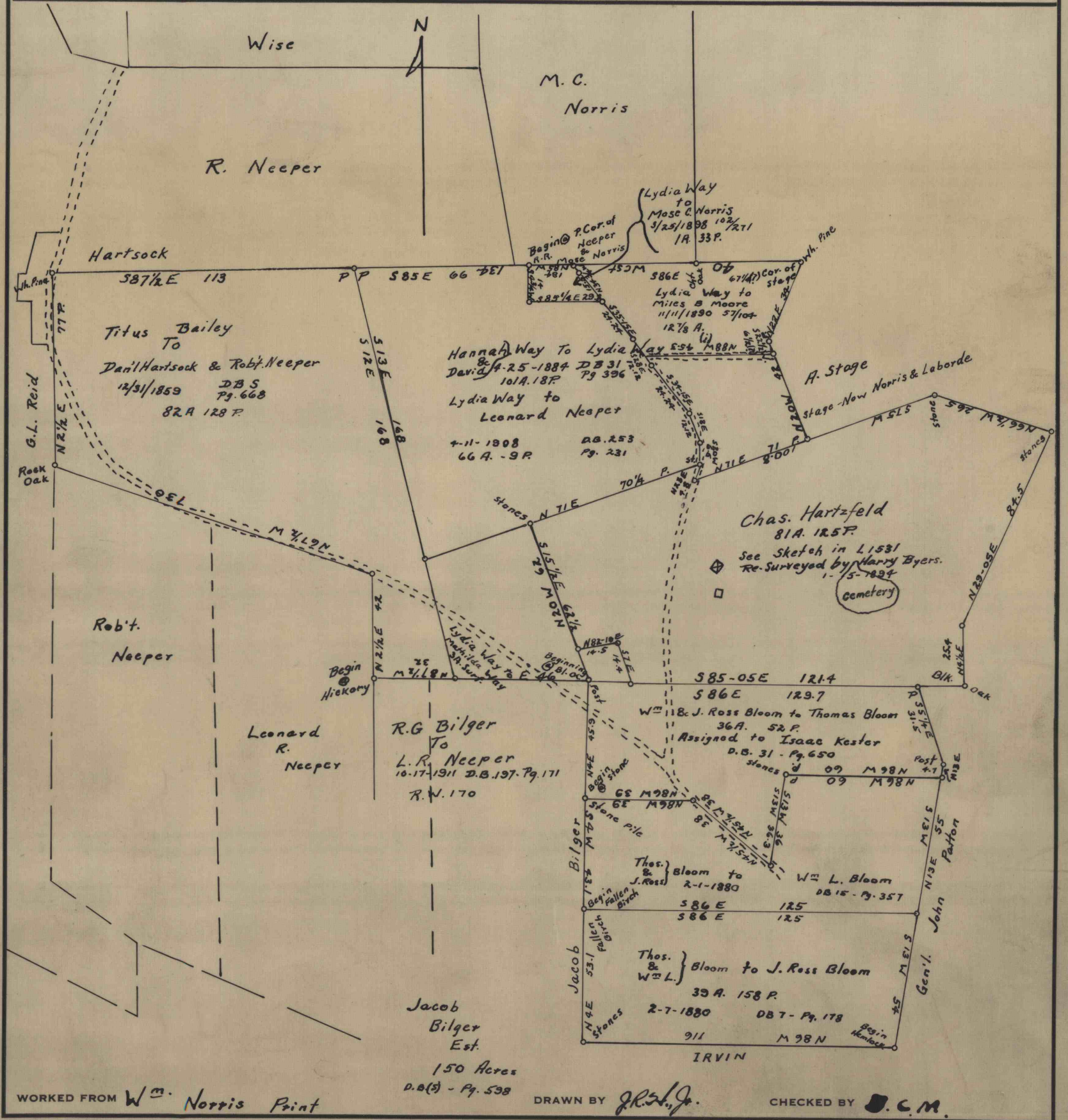
SHEET No.

Map of Lands in Pike Township
Near
Curwensville, Pa.

50-3-1182

SCALE 1" = 800'

DATE 12-30-49



WORKED FROM W^m. Norris Print

DRAWN BY J.R.S./J.

CHECKED BY D.C.M.