

REFERENCE DATA

# CRESCENT REFRACTORIES CO.

CURWENVILLE, CLEARFIELD COUNTY, PA.

ENGINEERING DEPARTMENT

MAP SHOWING LAND OF I. B. NORRIS  
SITUATED IN PIKE TWP. CLEARFIELD CO.

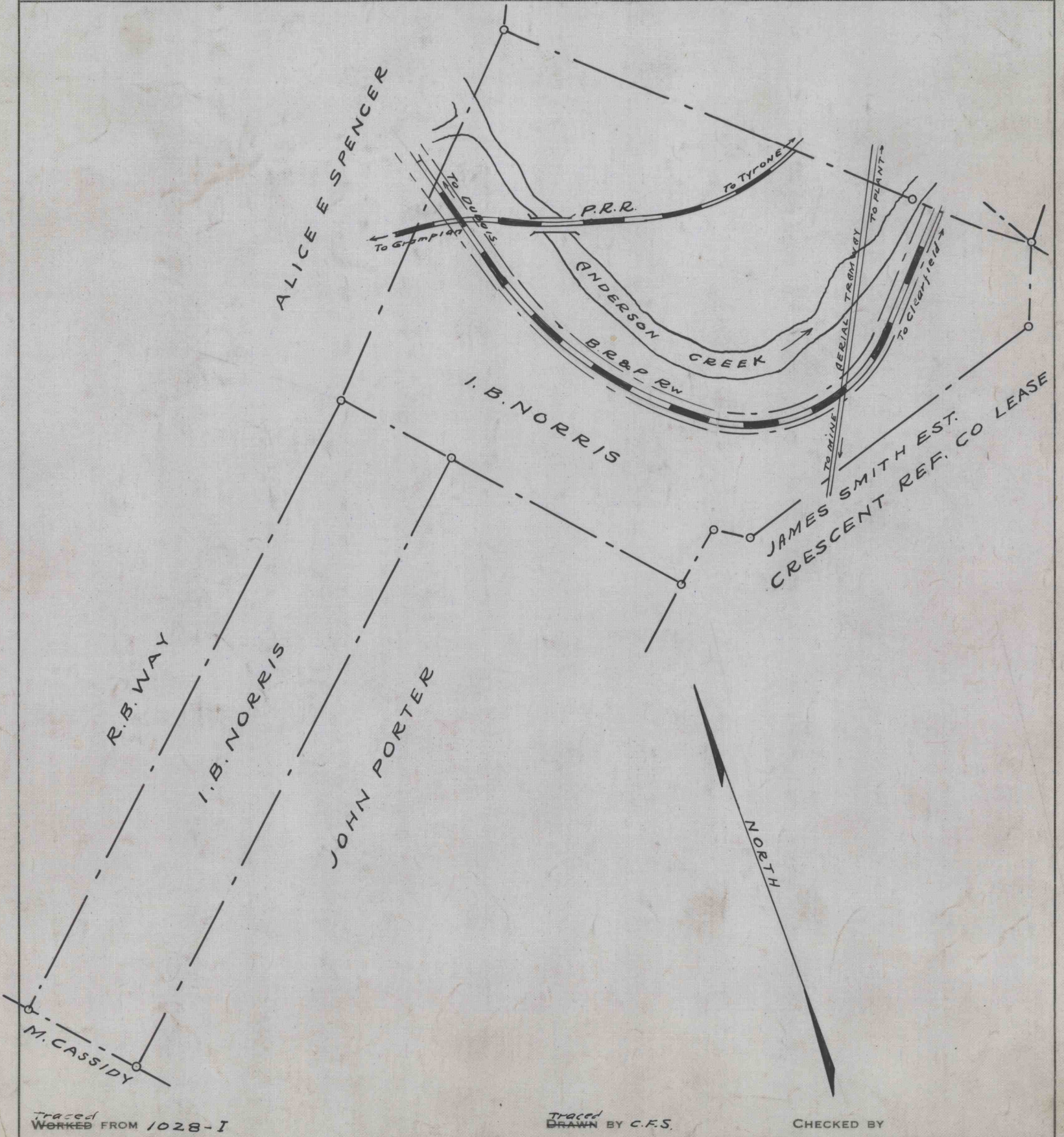
ENV. No. ~~41~~

SHEET No. ~~147~~

50-3-348

DATE APR. 9-1920

SCALE 1" = 600'



Traced  
WORKED FROM 1028-1

Traced  
DRAWN BY C.F.S.

CHECKED BY