

NORTH AMERICAN REFRACTORIES CO.

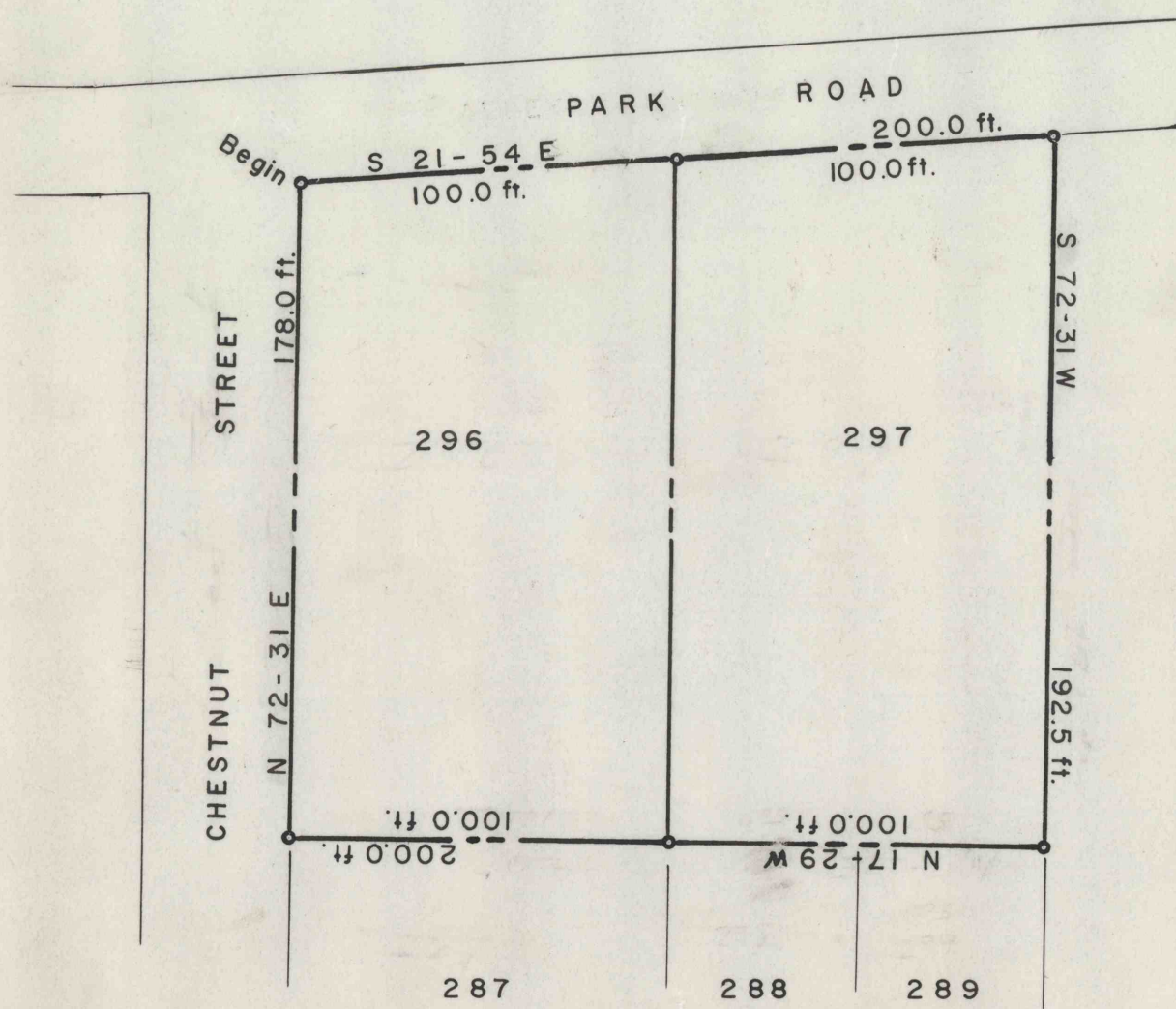
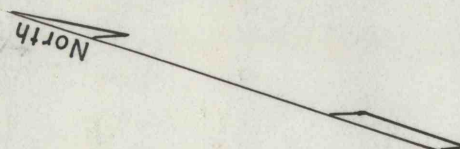
RESEARCH CENTER

CURWENSVILLE, PA.

SCALE 1 inch = 50 feet

DATE 11-28-66

LOTS NO. 296 & 297 KISTLER BOROUGH, MIFFLIN CO., PA.



DD-

REVISION

DRAWN W. M. CHECKED

REFERENCE:

Index No. 60-3-372-50

60-3-375-20