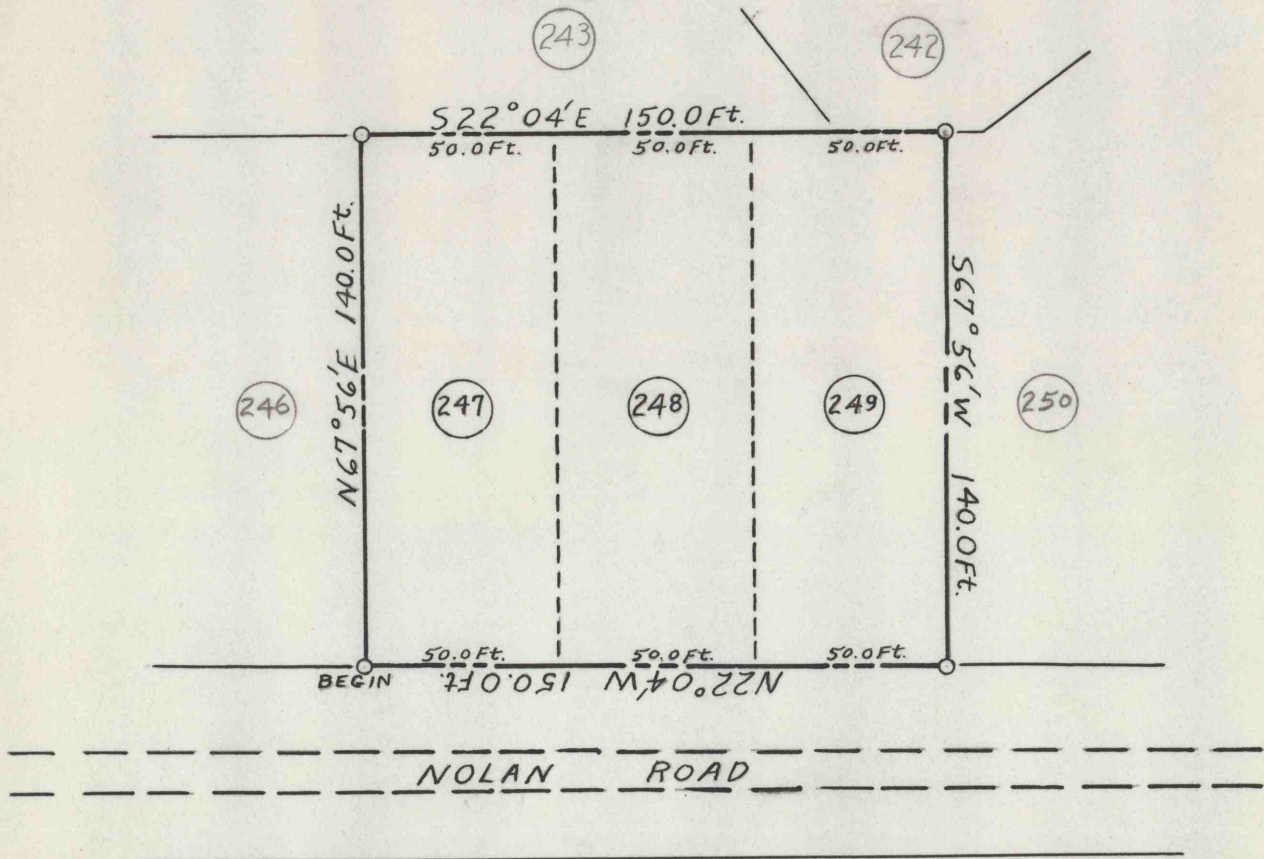
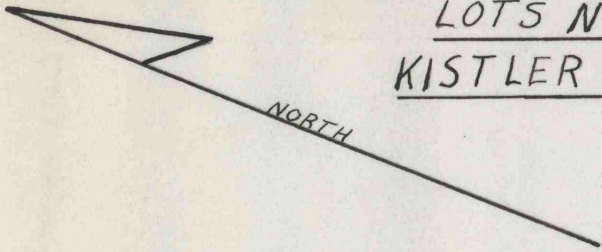


**NORTH AMERICAN REFRACTORIES CO.**  
**DIE DESIGN DEPT** **RESEARCH CENTER**  
**CURWENSVILLE, PA.**

SCALE 1 IN. = 50 Ft.

DATE 6-30-65

LOTS N<sup>o</sup> 247, 248, & 249  
KISTLER BORO., MIFFLIN COUNTY, PA.



REVISION

DRAWN G.R.D.

CHECKED *[Signature]*

REFERENCE: 60-3-236-50

DD- 60-3-350-50