

REFERENCE DATA

NORTH AMERICAN REFRACTORIES CO.

1012 NATIONAL CITY BANK BUILDING
CLEVELAND, OHIO

MAP OF
LOT No. 264

ENV. No.

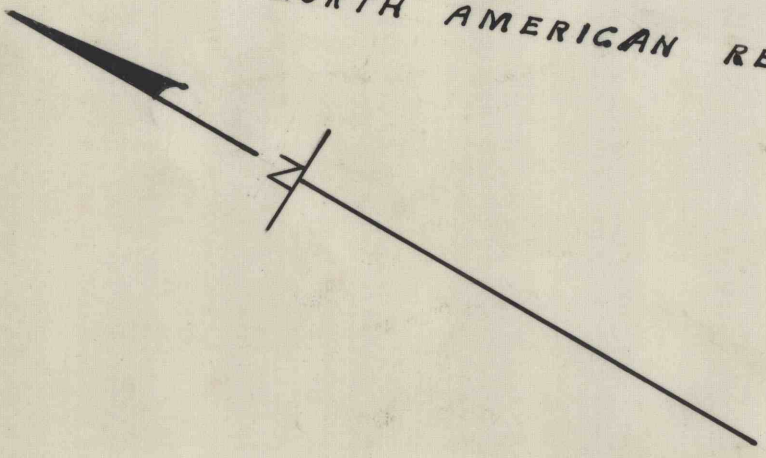
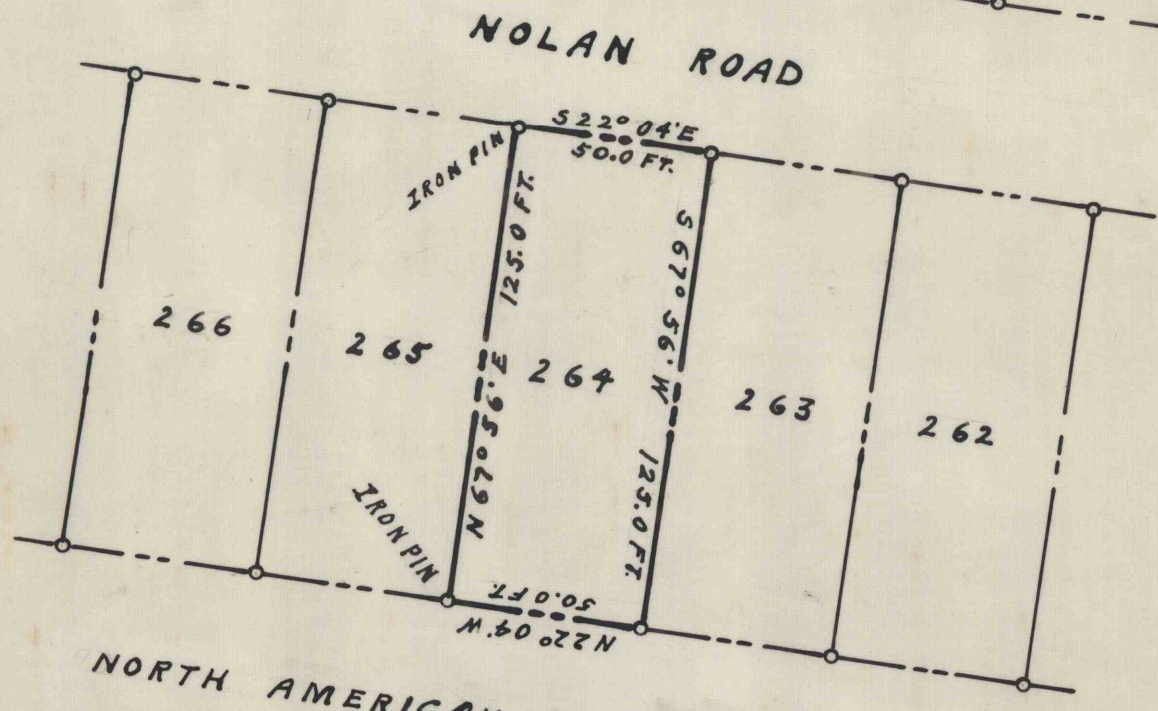
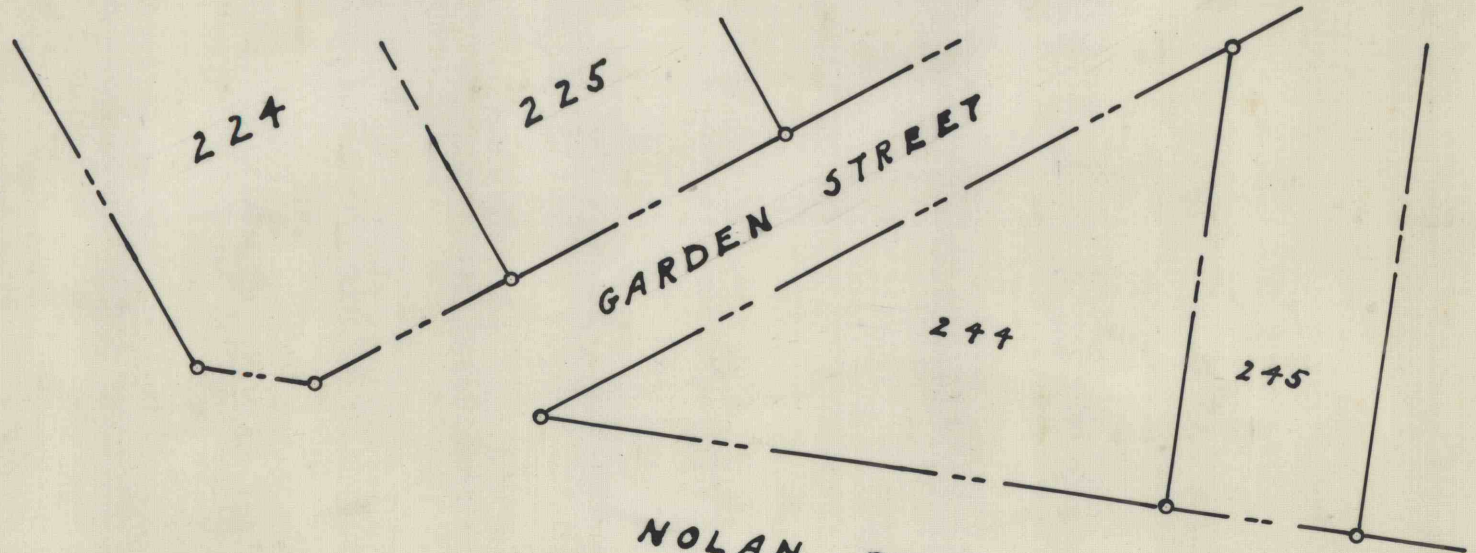
SHEET No.

60-3-348-50

SCALE 1" = 50'

KISTLER BOROUGH, MIFFLIN CO. PENNA.

DATE 3-15-65



WORKED FROM 60-3-236-50

DRAWN BY J. G. M.

CHECKED BY *J. G. M.*