

REFERENCE DATA

NORTH AMERICAN REFRACTORIES CO.  
1012 NATIONAL CITY BANK BUILDING  
CLEVELAND, OHIO

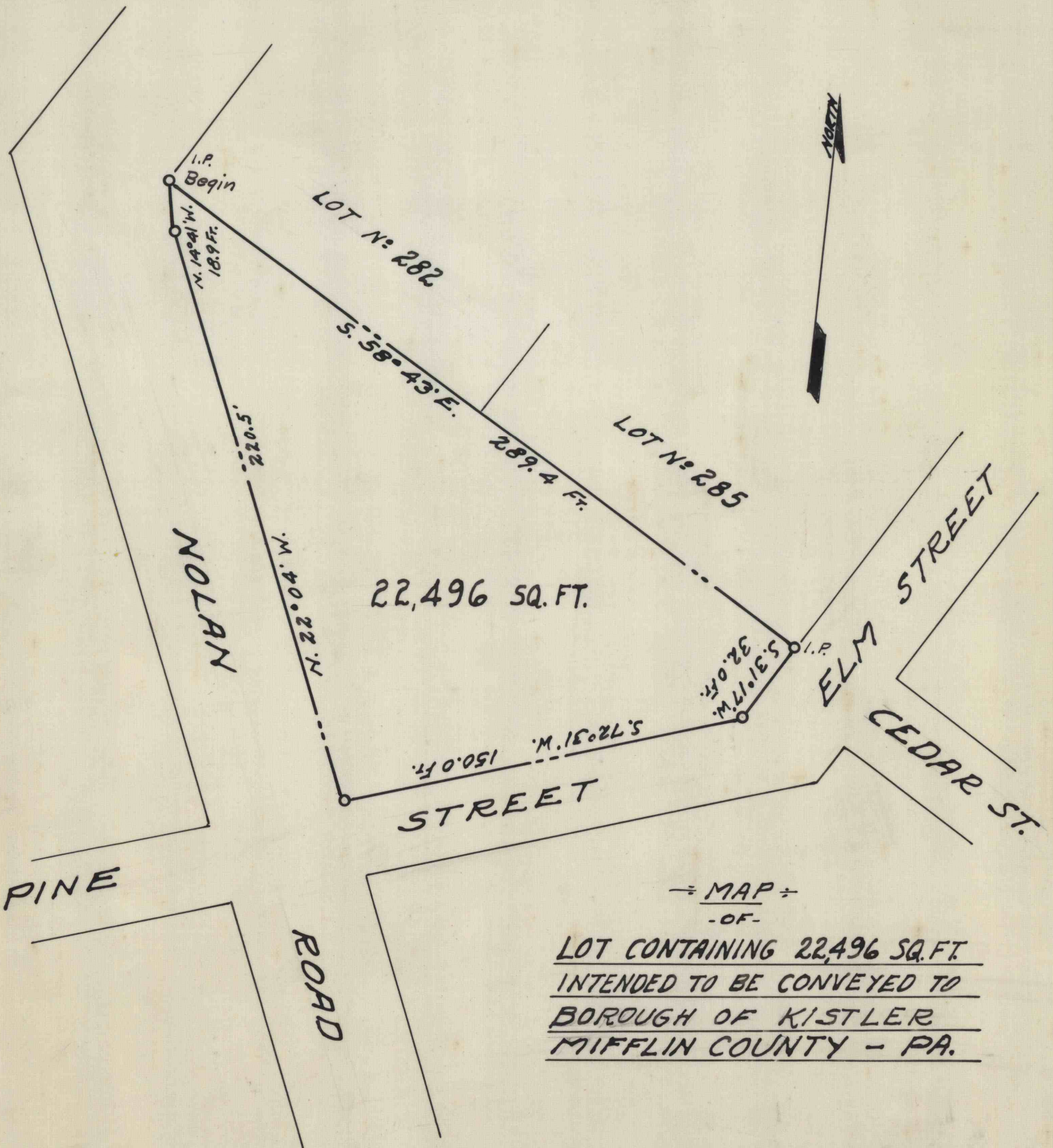
ENV. No.

SHEET No.

60-3-324-50

SCALE 1" = 50 Ft.

DATE OCT. 26, 1961.



MAP OF  
LOT CONTAINING 22,496 SQ. FT.  
INTENDED TO BE CONVEYED TO  
BOROUGH OF KISTLER  
MIFFLIN COUNTY - PA.

WORKED FROM

DRAWN BY *J.A. Jr.*

CHECKED BY *J.R. Jr.*