

NORTH AMERICAN REFRACTORIES CO.

1012 NATIONAL CITY—EAST 6TH BUILDING

CLEVELAND 14, OHIO

ENV. No.

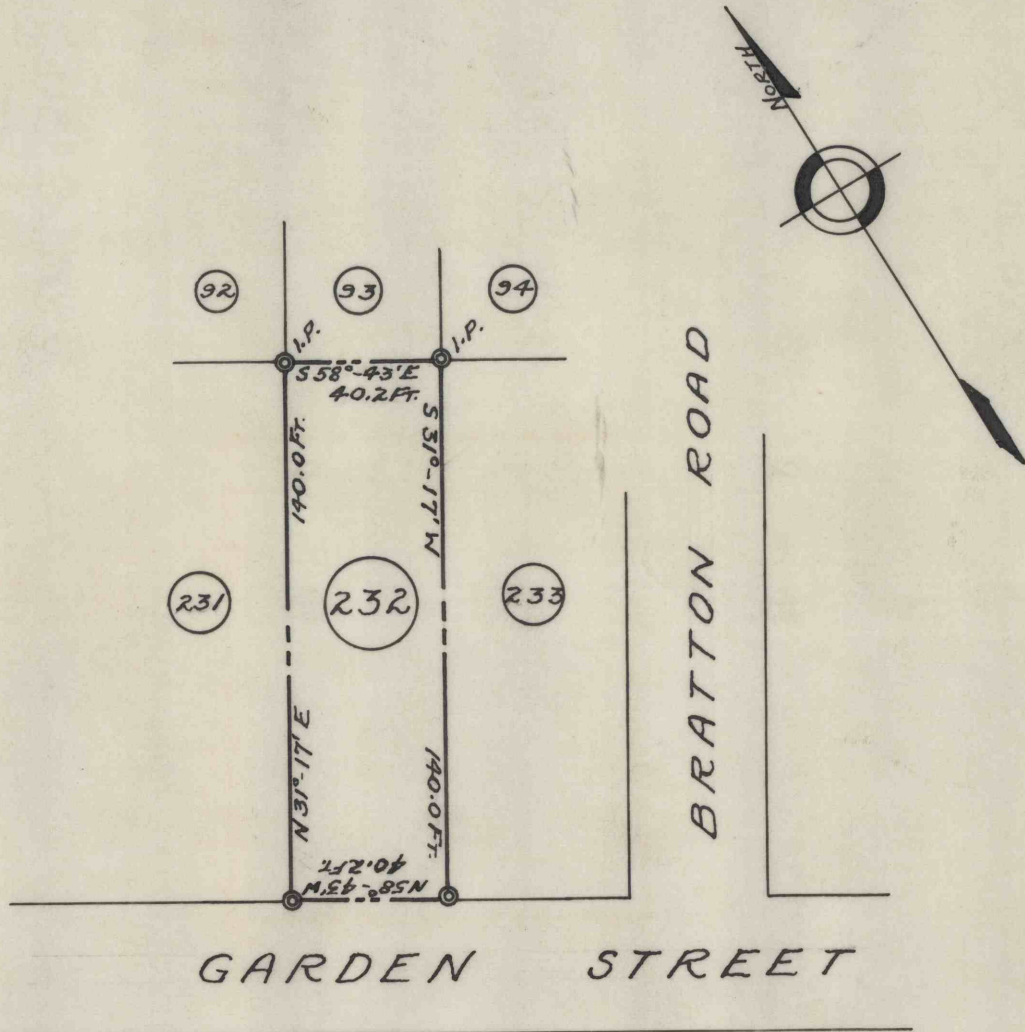
SHEET No.

60-3-312-50

MAP OF LOT NUMBER 232
KISTLER BOROUGH, MIFFLIN CO., PA.

SCALE 1" = 50 FT.

DATE 9-8-59



REVISION

DRAWN *J.R.H.R.* CHECKED

REFERENCE: Map & Survey - NB. 236, Pg. 16