

REFERENCE DATA

NORTH AMERICAN REFRACTORIES CO.
1012 NATIONAL CITY BANK BUILDING
CLEVELAND, OHIO

ENV. No.

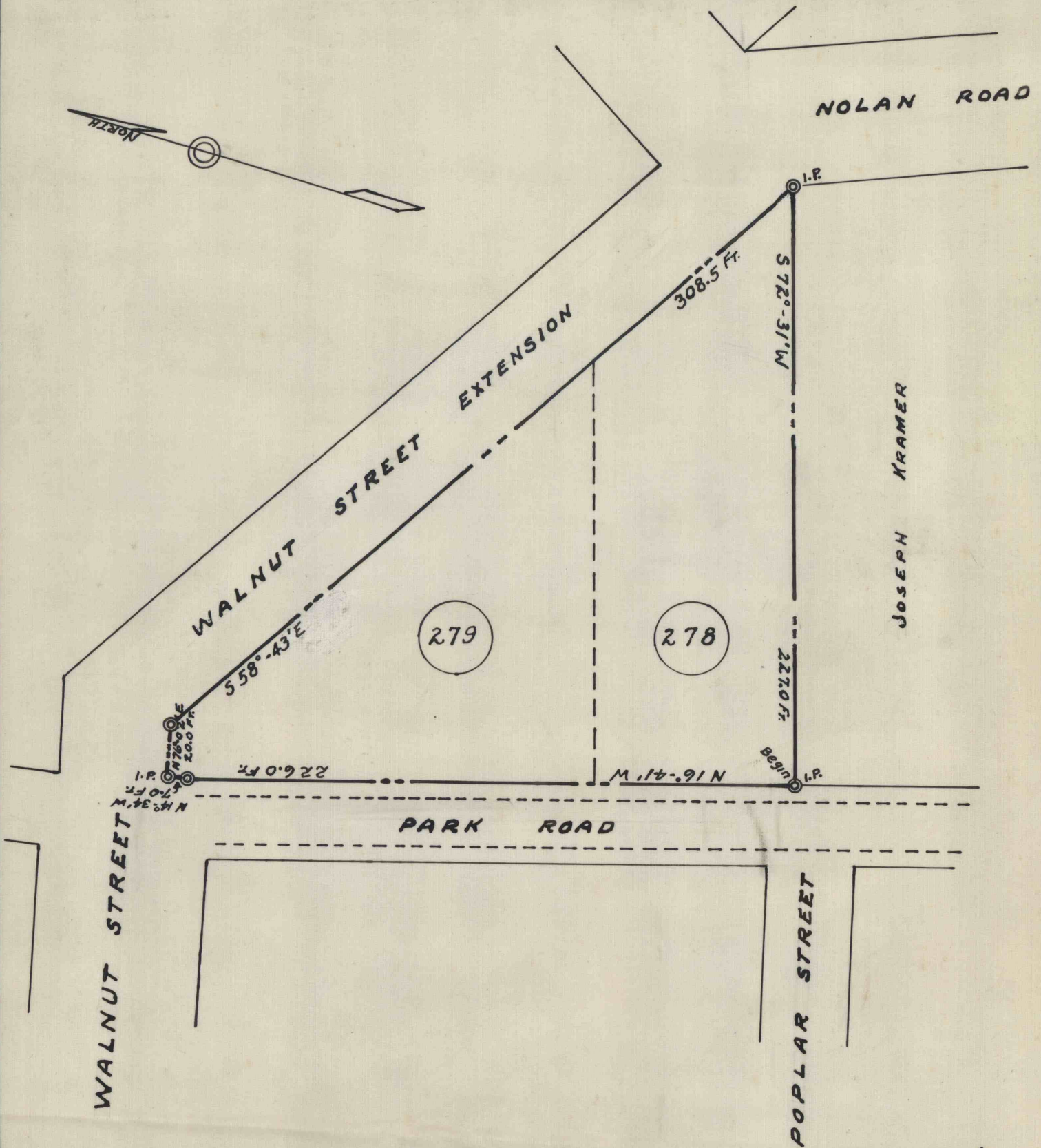
SHEET No.

MAP OF LOTS No. 278 & 279
KISTLER BOROUGH, MIFFLIN CO., PA.

60-3-310-50

SCALE 1" = 50 FT.

DATE 10-17-58



WORKED FROM SURVEYS - N.B 236, Pgs. 50 & 51 AND MAP.

DRAWN BY J.R.H., JR.

CHECKED BY *JWH Jr*