

NORTH AMERICAN REFRACTORIES CO.

1012 NATIONAL CITY—EAST 6TH BUILDING

CLEVELAND 14, OHIO

ENV. No.

SHEET No.

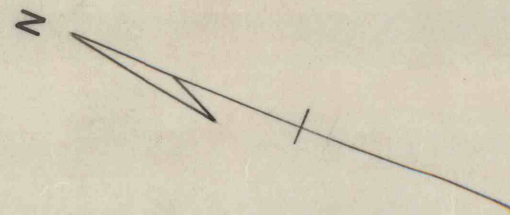
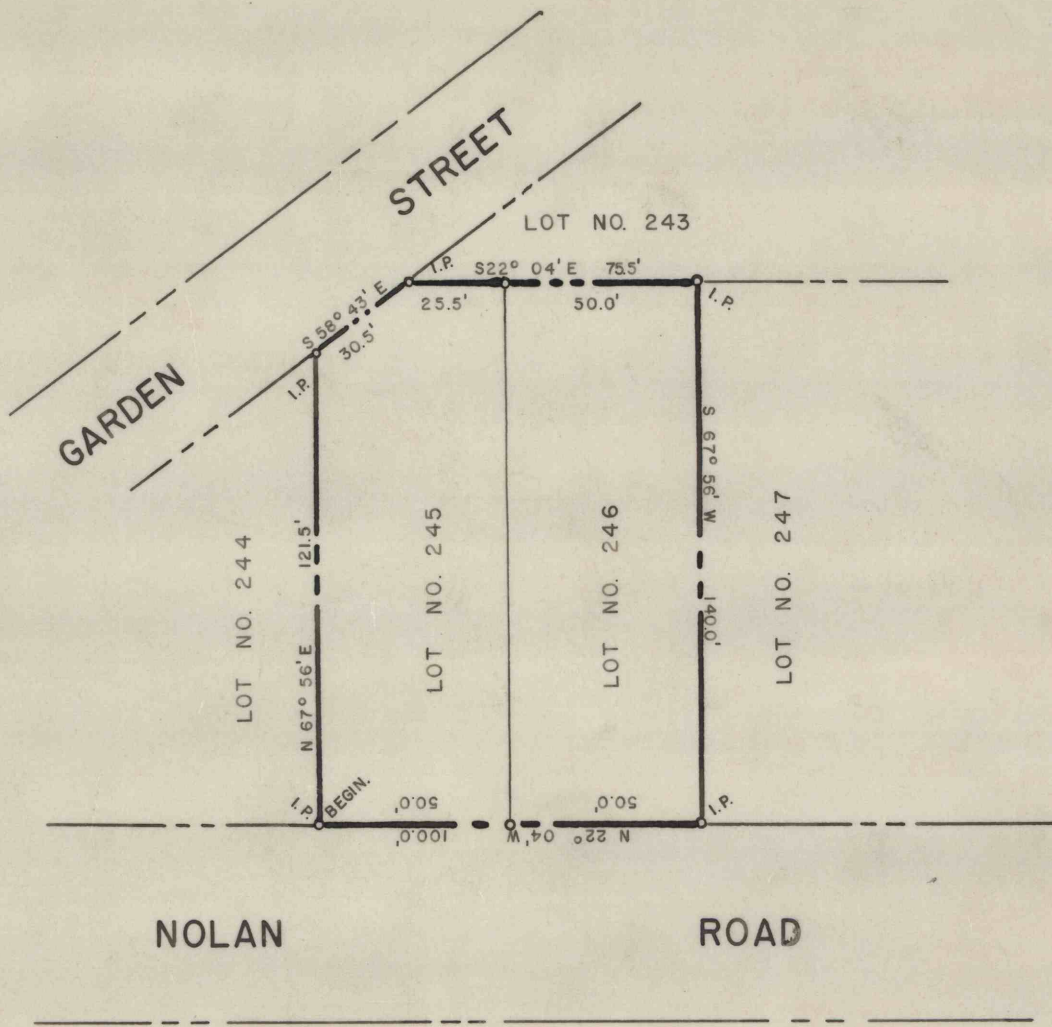
60-3-304-50

PLAN OF LOTS NUMBER 245 & 246

KISTLER BOROUGH, MIFFLIN CO., PA.

SCALE 1" = 50'

DATE 11 - 4 - 57



REVISION

DRAWN W.M.

CHECKED

REFERENCE: 60-3-236-50

60-3-304-50