

NORTH AMERICAN REFRACTORIES CO.

1012 NATIONAL CITY—EAST 6TH BUILDING

CLEVELAND 14, OHIO

ENV. No.

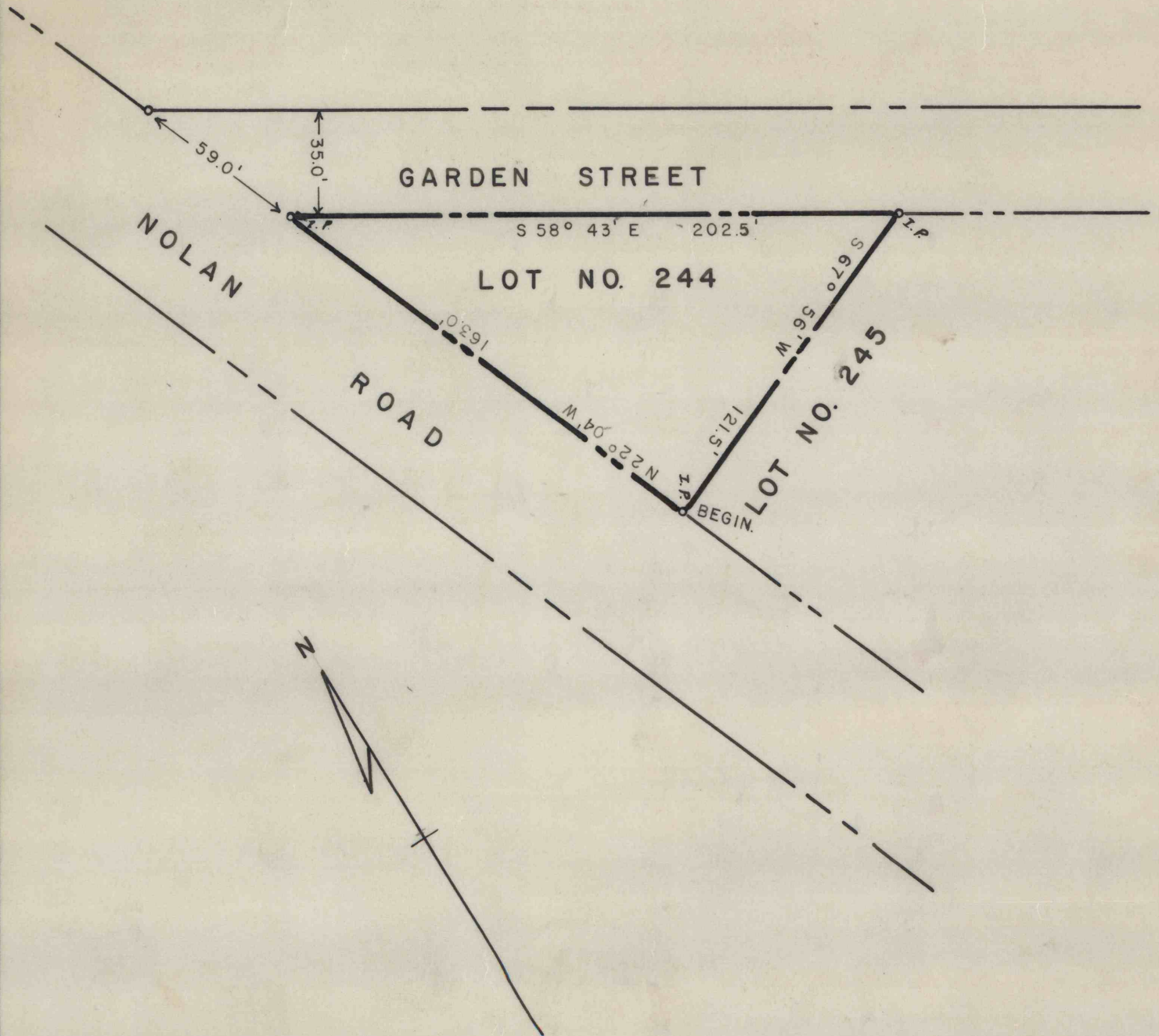
SHEET No.
60-3-302-50

MAP OF LOT NUMBER 244

SCALE 1"=50'

KISTLER BOROUGH, MIFFLIN CO., PA.

DATE 7-29-57



REVISION

DRAWN W.M.

CHECKED

REFERENCE: 60-3-236-50

BENNA-015PM

60-3-305-20

60-3-305-20

60-3-305-20