

60-3-300-20

NORTH AMERICAN REFRACTORIES CO.

1012 NATIONAL CITY—EAST 6TH BUILDING
CLEVELAND 14, OHIO

ENV. No.

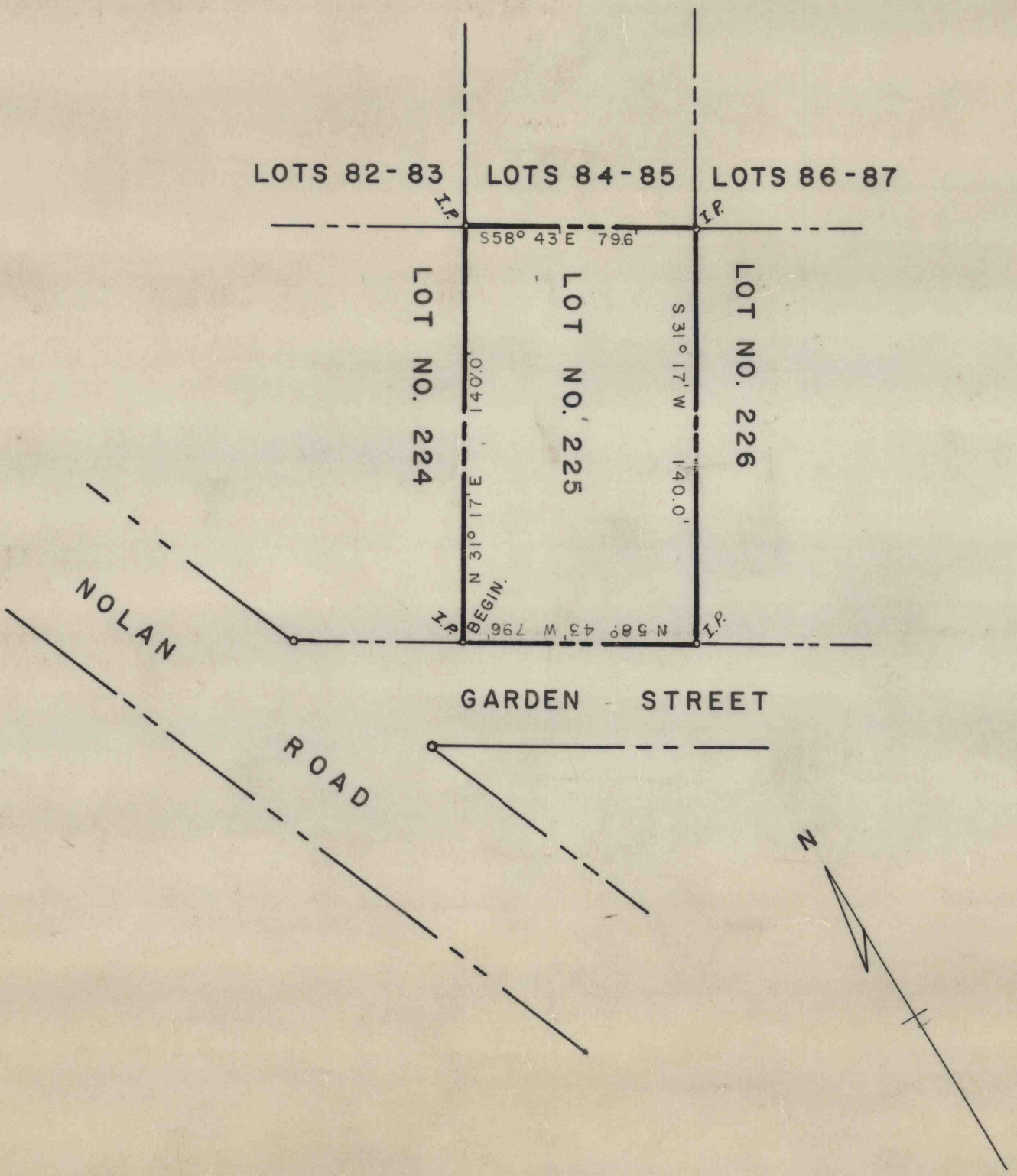
SHEET No.
60-3-300-50

MAP OF LOT NUMBER 225

SCALE 1" = 50' KISTLER BOROUGH, MIFFLIN CO., PA.

DATE 7-29-57

60-3-300-20



REVISION

DRAWN W. M.

CHECKED

REFERENCE: 60-3-236-50

BENN-01509

60-3-300-20