

NORTH AMERICAN REFRACTORIES CO.

1012 NATIONAL CITY—EAST 6TH BUILDING
CLEVELAND 14, OHIO

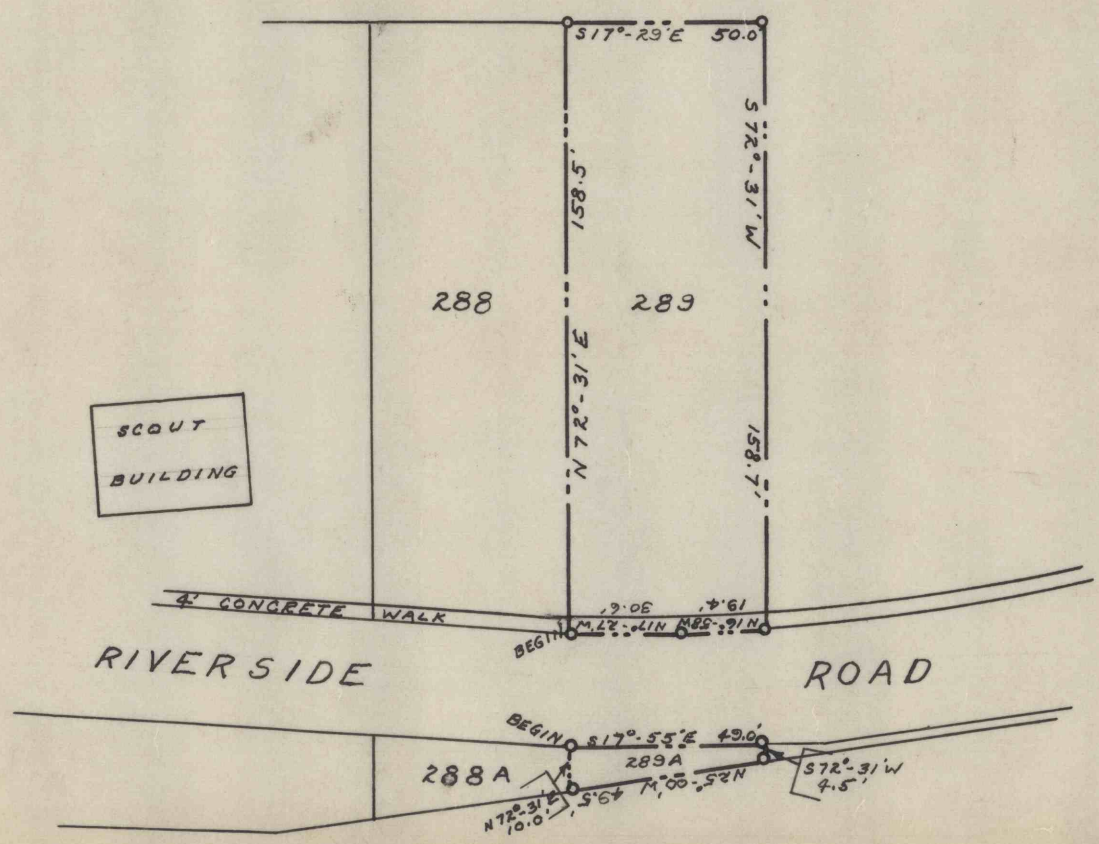
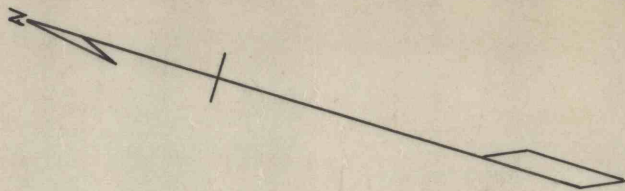
ENV. No.

SHEET NO.
60-3-284-50

MAP OF LOTS NUMBER 289 & 289A

SCALE 1" = 50' IN KISTLER BOROUGH, MIFFLIN CO, PA. DATE 10-25-54

60-483-E-00



REVISION			REFERENCE: MAP OF KISTLER BOROUGH.
DRAWN J.R.H., JR.	CHECKED <i>J.R.H.</i>		

60-483-E-00