

02-585-E-00

PNF10-11139

NORTH AMERICAN REFRACTORIES CO.

1012 NATIONAL CITY—EAST 6TH BUILDING
CLEVELAND 14, OHIO

LOTS N^o 267 & 269—KISTLER BORO.

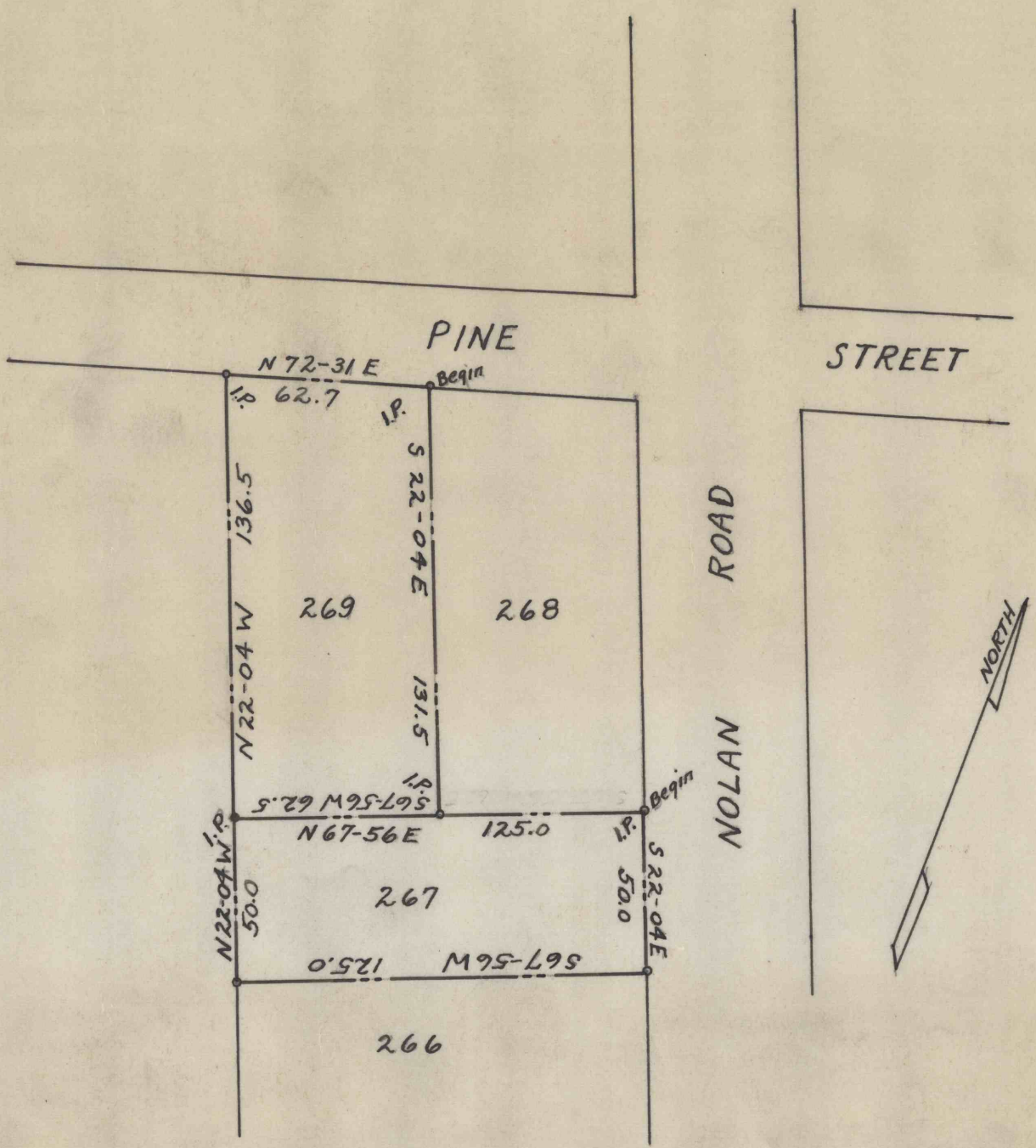
SOLD TO
LEWIS A. KEMP

ENV. No.

SHEET No.
60-3-282-50

DATE 9/22/54

SCALE 1" = 50 FT.



REVISION		REFERENCE:
DRAWN	CHECKED <i>[Signature]</i>	

02-585-E-00

60-3-282-50