

NORTH AMERICAN REFRACTORIES CO.

ENV. No.

1012 NATIONAL CITY—EAST 6TH BUILDING

SHEET No.

CLEVELAND 14, OHIO

60-3-280-50

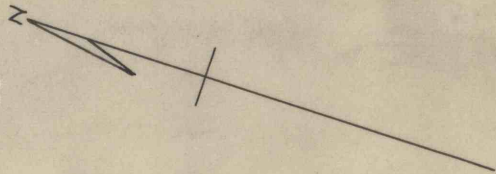
MAP OF LOTS NUMBER 288 & 288A

IN KISTLER BOROUGH, MIFFLIN CO., PA.

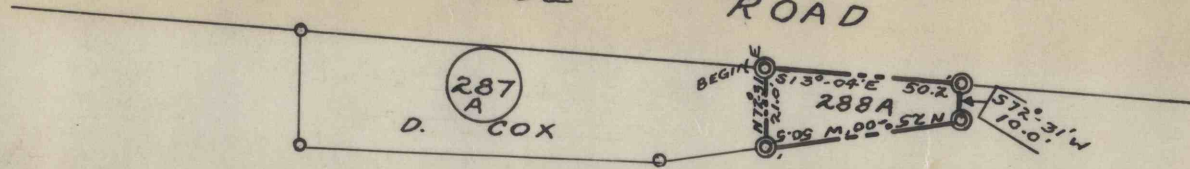
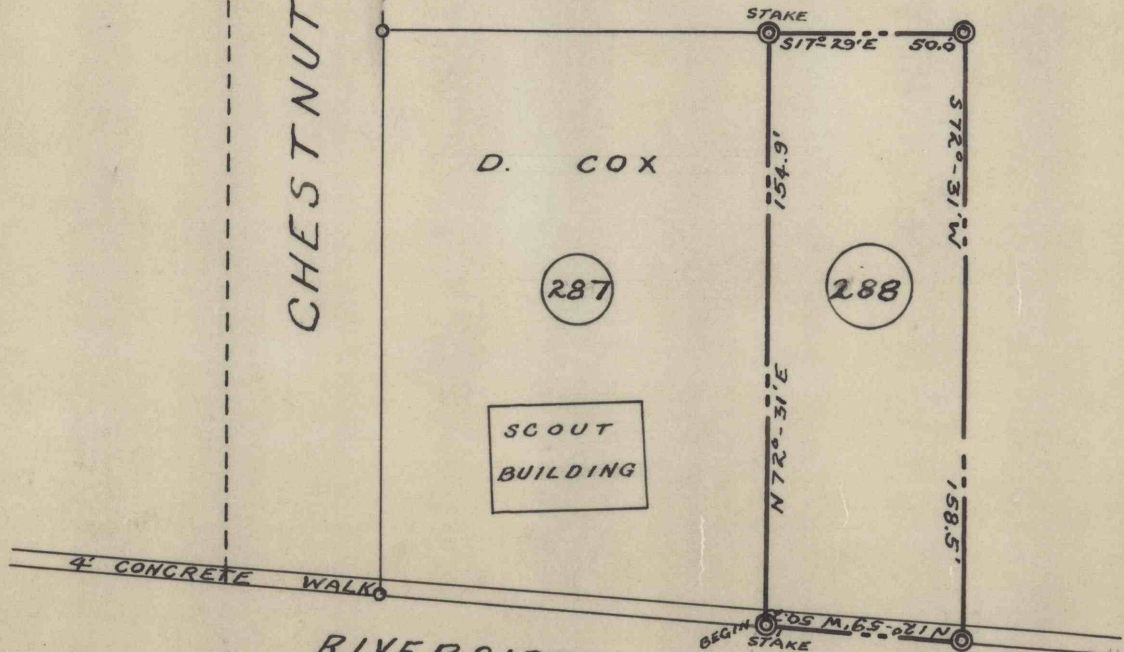
SCALE 1"=50'

DATE 8-30-54

FIND LOTS



CHESTNUT STREET



JUNIATA RIVER

60-2-580-20

60-2-580-20

REVISION

DRAWN J.R.H., Jr.

CHECKED *[Signature]*

REFERENCE: SURVEY AND MAP