

# Lots On Riverside Road Kistler Penna.

REFERENCE DATA

**NORTH AMERICAN REFRACTORIES CO.**  
1012 NATIONAL CITY BANK BUILDING  
CLEVELAND, OHIO

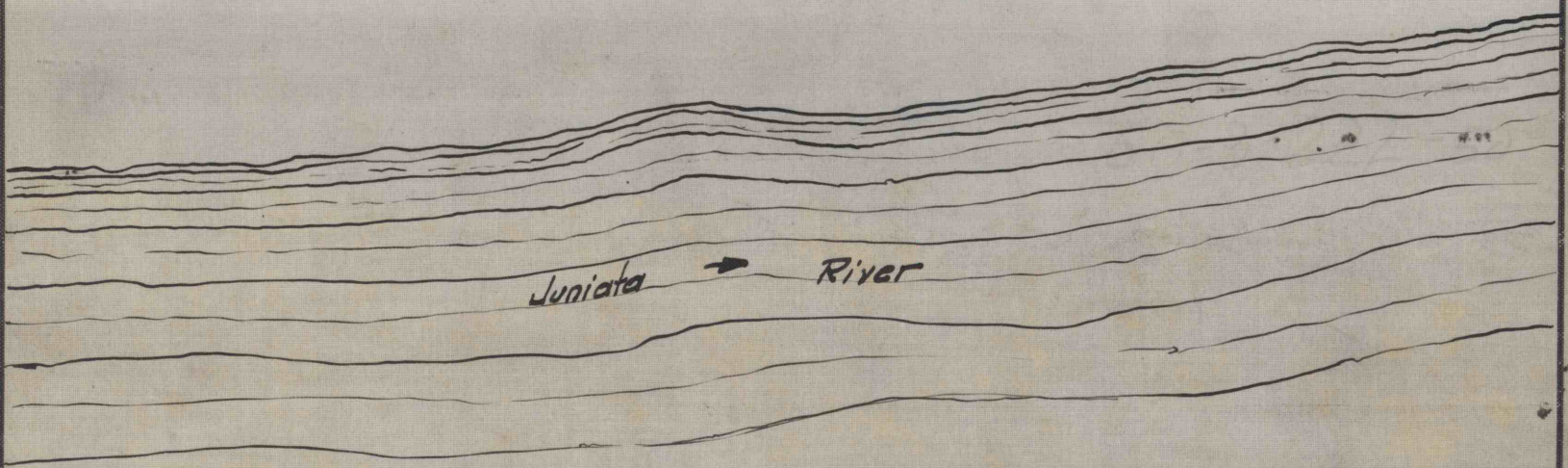
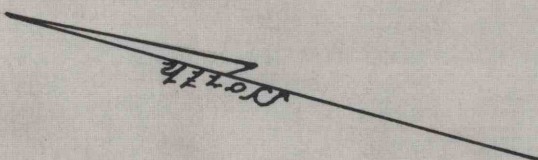
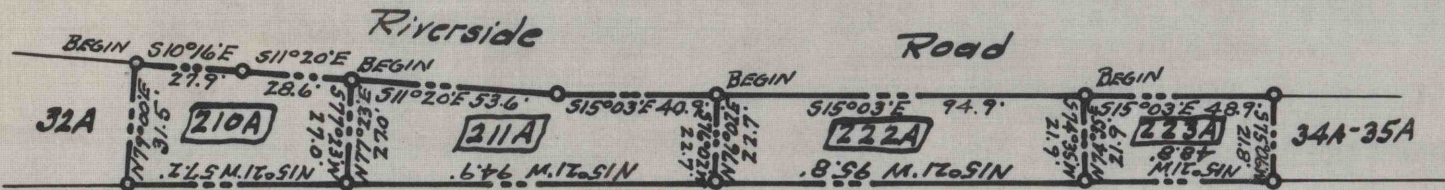
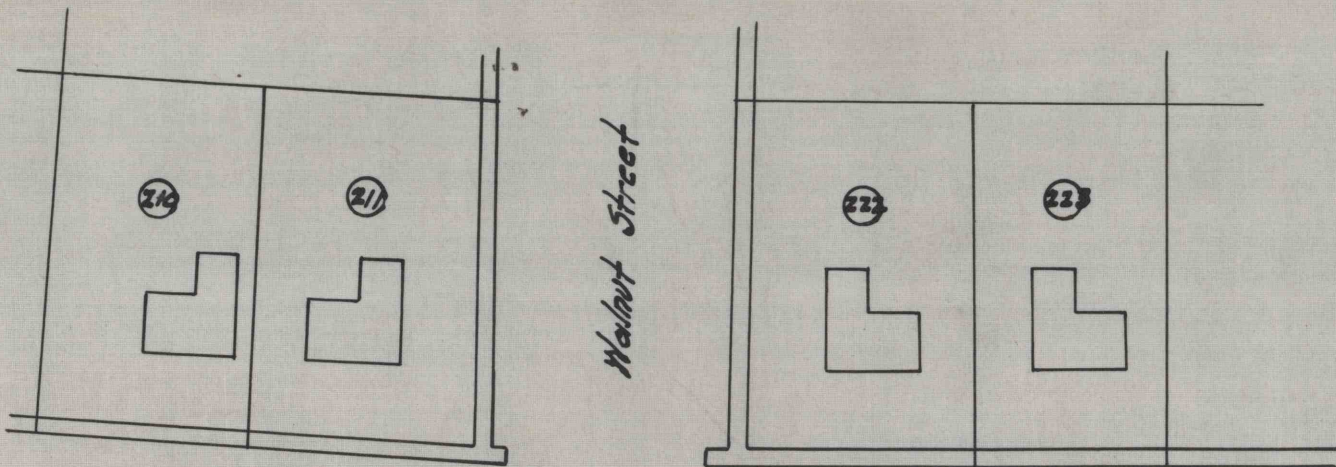
ENV. No.

SHEET No.

60-3-222-50

SCALE 1"=50'

DATE May 18, 1943



WORKED FROM *Map*

DRAWN BY *THH*

CHECKED BY *gob*

60-3-222-50