

*Lots On Riverside Road  
Kistler, Penna.*

REFERENCE DATA

**NORTH AMERICAN REFRACTORIES CO.**  
1012 NATIONAL CITY BANK BUILDING  
CLEVELAND, OHIO

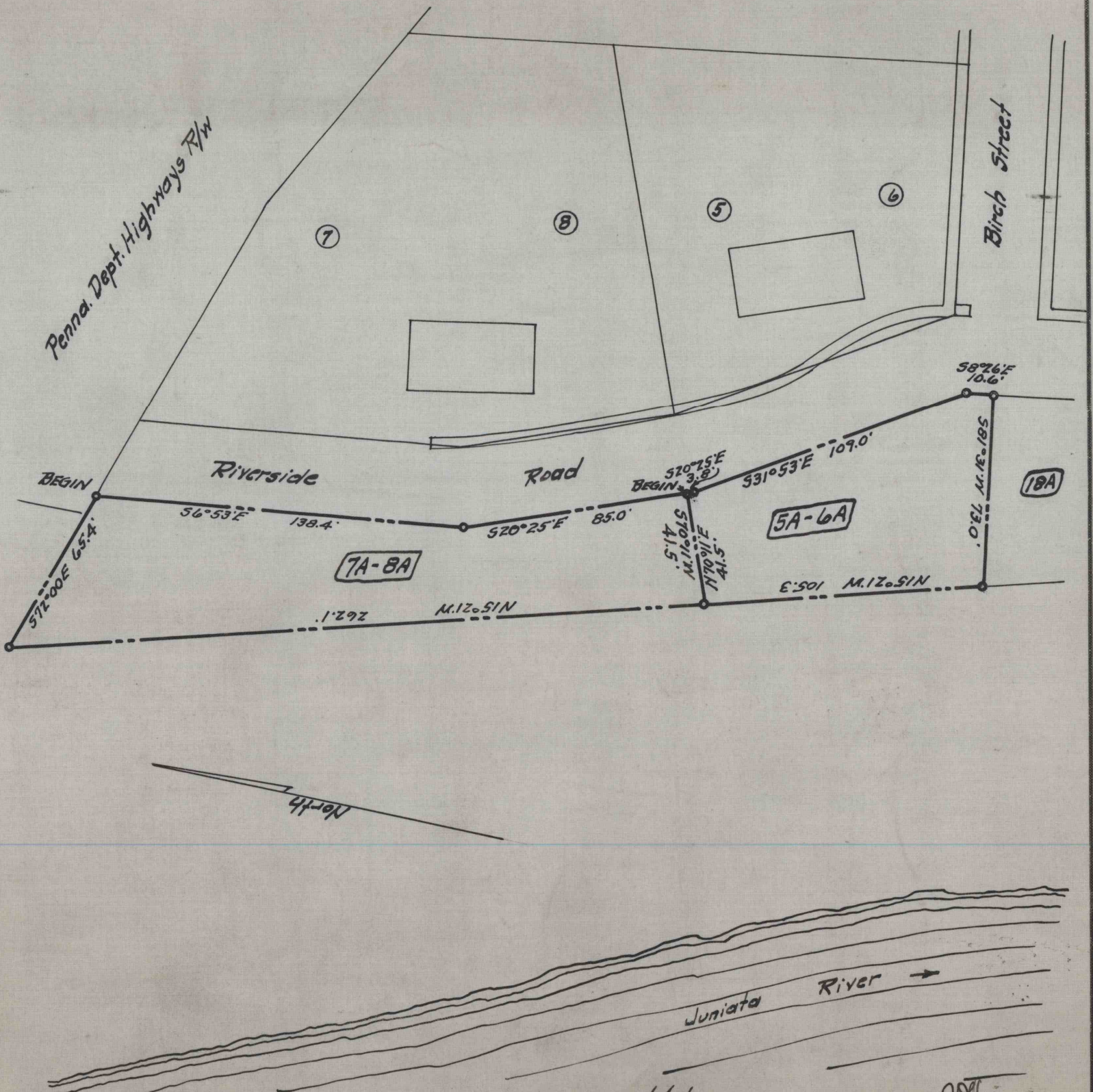
ENV. No.

SHEET No.

60-3-218-50

SCALE 1"=50'

DATE May 18, 1943



WORKED FROM *Map*

DRAWN BY *H.H.*

CHECKED BY *J.H.*

60-3-218-50