

*Lots on Cedar Street  
Kistler, Pa.*

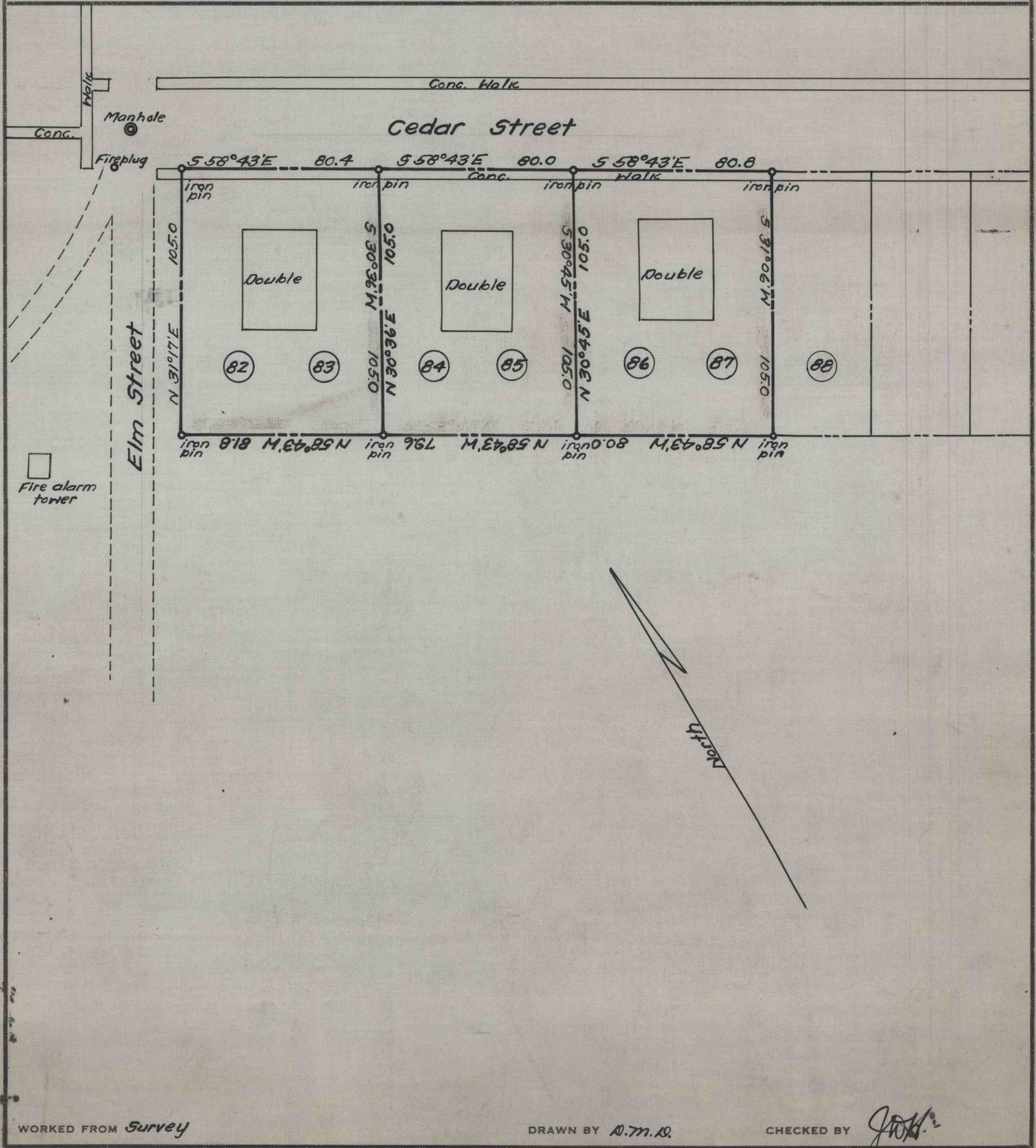
REFERENCE DATA

**NORTH AMERICAN REFRACTORIES CO.**  
1012 NATIONAL CITY BANK BUILDING  
CLEVELAND, OHIO

ENV. No.  
SHEET No.  
**60-3-216-50**

SCALE 1"=50'

DATE *May 6, 1943*



WORKED FROM *Survey*

DRAWN BY *N.M.A.*

CHECKED BY *[Signature]*