

*Lots on Cedar & State Streets
Kistler, Pa.*

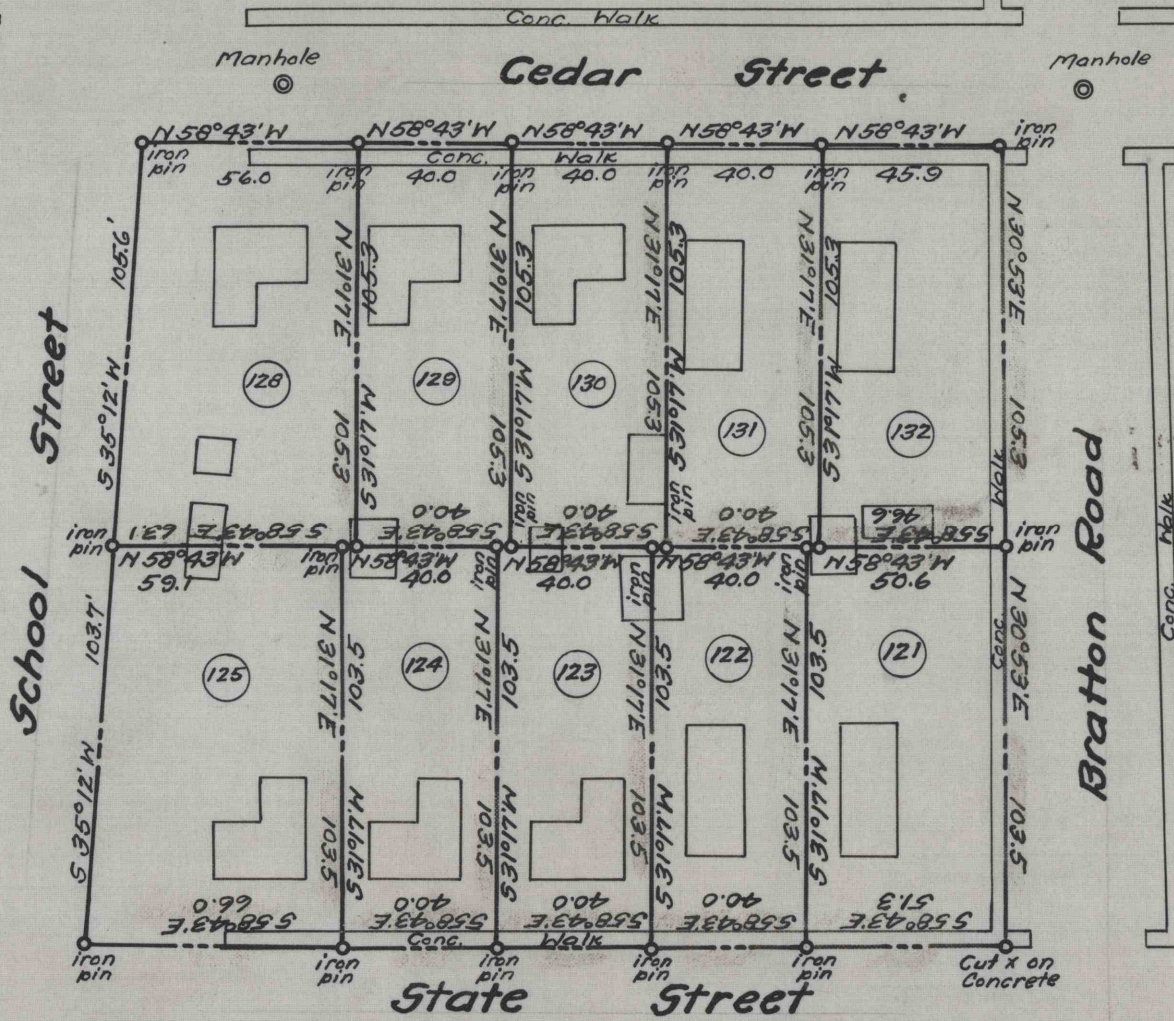
REFERENCE DATA

NORTH AMERICAN REFRACTORIES CO.
1012 NATIONAL CITY BANK BUILDING
CLEVELAND, OHIO

ENV. No.
SHEET No.
60-3-210-50

SCALE **1"=50'**

DATE **May 6, 1943**



← To Newton Hamilton

State (Macadam) Highway

→ To Mt Union



WORKED FROM *Survey*

DRAWN BY *D.M.D.*

CHECKED BY *J.H.B.*