

28  
68 5

Lots on Pine & Poplar Streets  
Kistler, Pa.

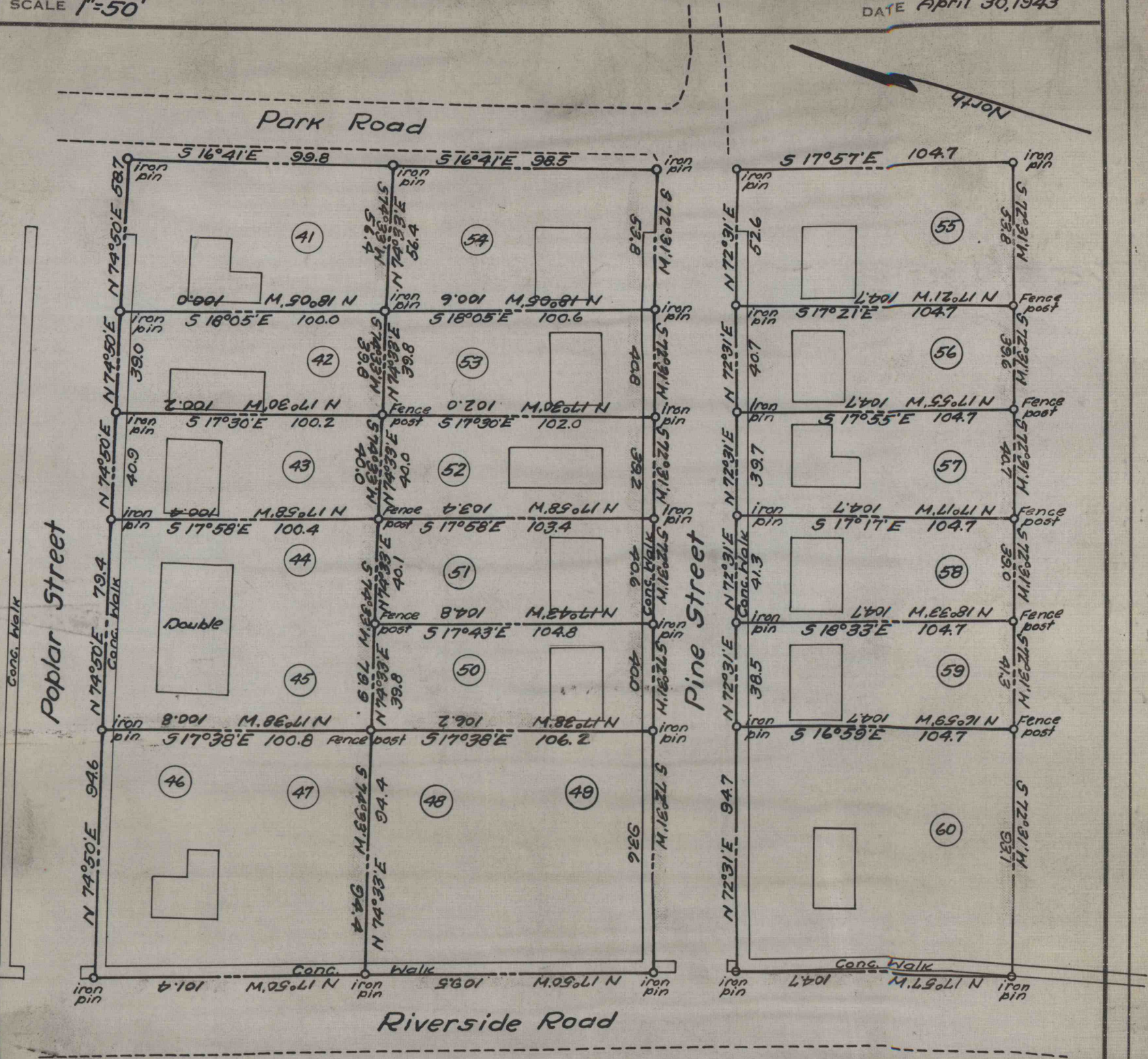
REFERENCE DATA

**NORTH AMERICAN REFRACTORIES CO.**  
1012 NATIONAL CITY BANK BUILDING  
CLEVELAND, OHIO

ENV. No.  
SHEET No.  
**60-3-200-50**

SCALE 1"=50'

DATE April 30, 1943



WORKED FROM Survey

DRAWN BY A.M.A.

CHECKED BY *JWS*