

MAP OF
EDGAR F. KURTZ LOTS 1 & 2
 KISTLER BOROUGH, MIFFLIN COUNTY
 PA.

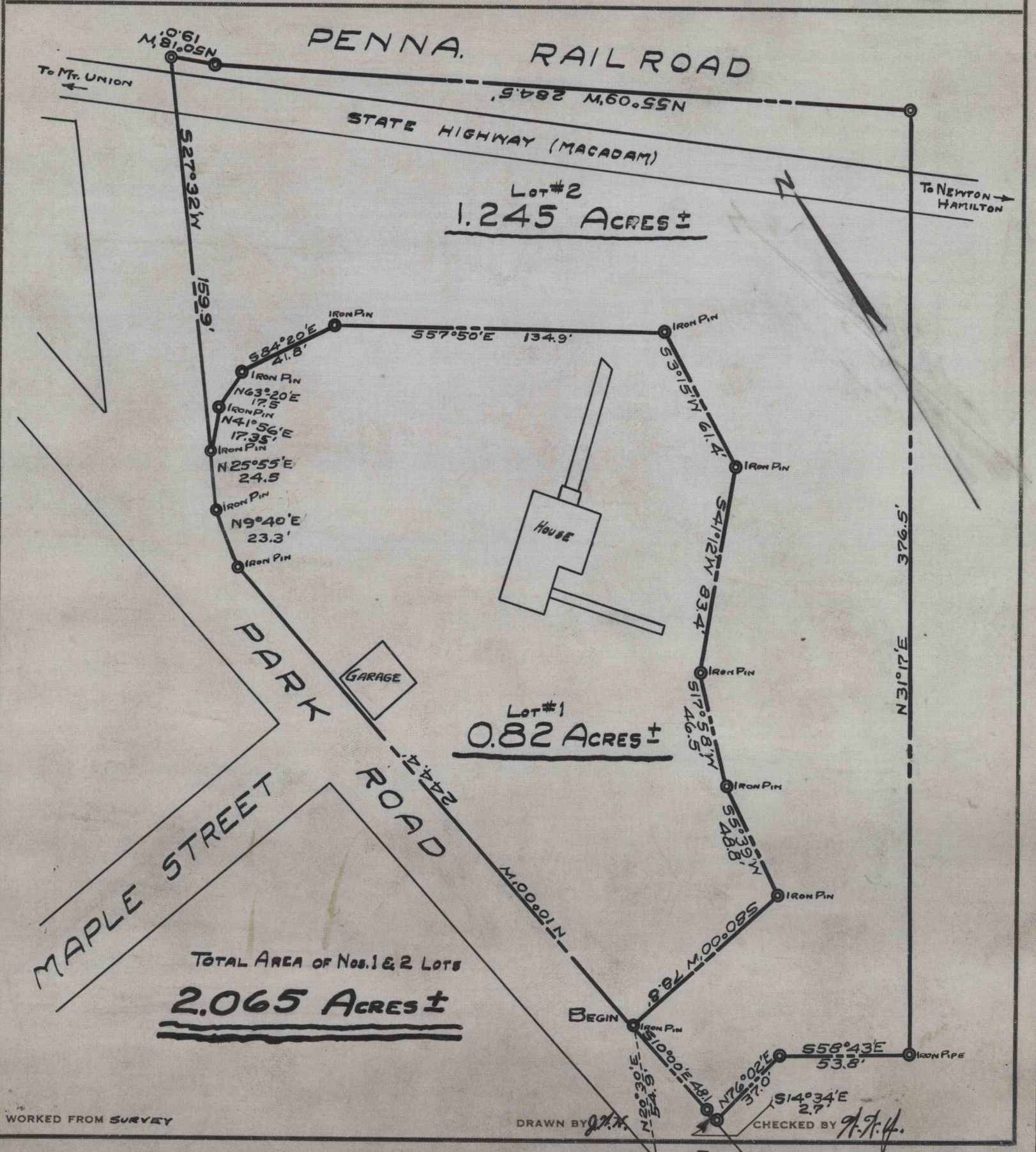
REFERENCE DATA

NORTH AMERICAN REFRACTORIES CO.
 1012 NATIONAL CITY BANK BUILDING
 CLEVELAND, OHIO

ENV. No.
 SHEET No.
60-3-188-50

SCALE 1"=50 FT.

DATE 2-3-43



TOTAL AREA OF Nos. 1 & 2 LOTS
2.065 Acres ±

WORKED FROM SURVEY

DRAWN BY *J.T.H.* CHECKED BY *J.T.H.*