

DRURYS RUN LOT NO 49-51-53
 NOYES TOWNSHIP - CLINTON COUNTY - PENNA.

SOLD TO
ROBERT ESCHENBACH

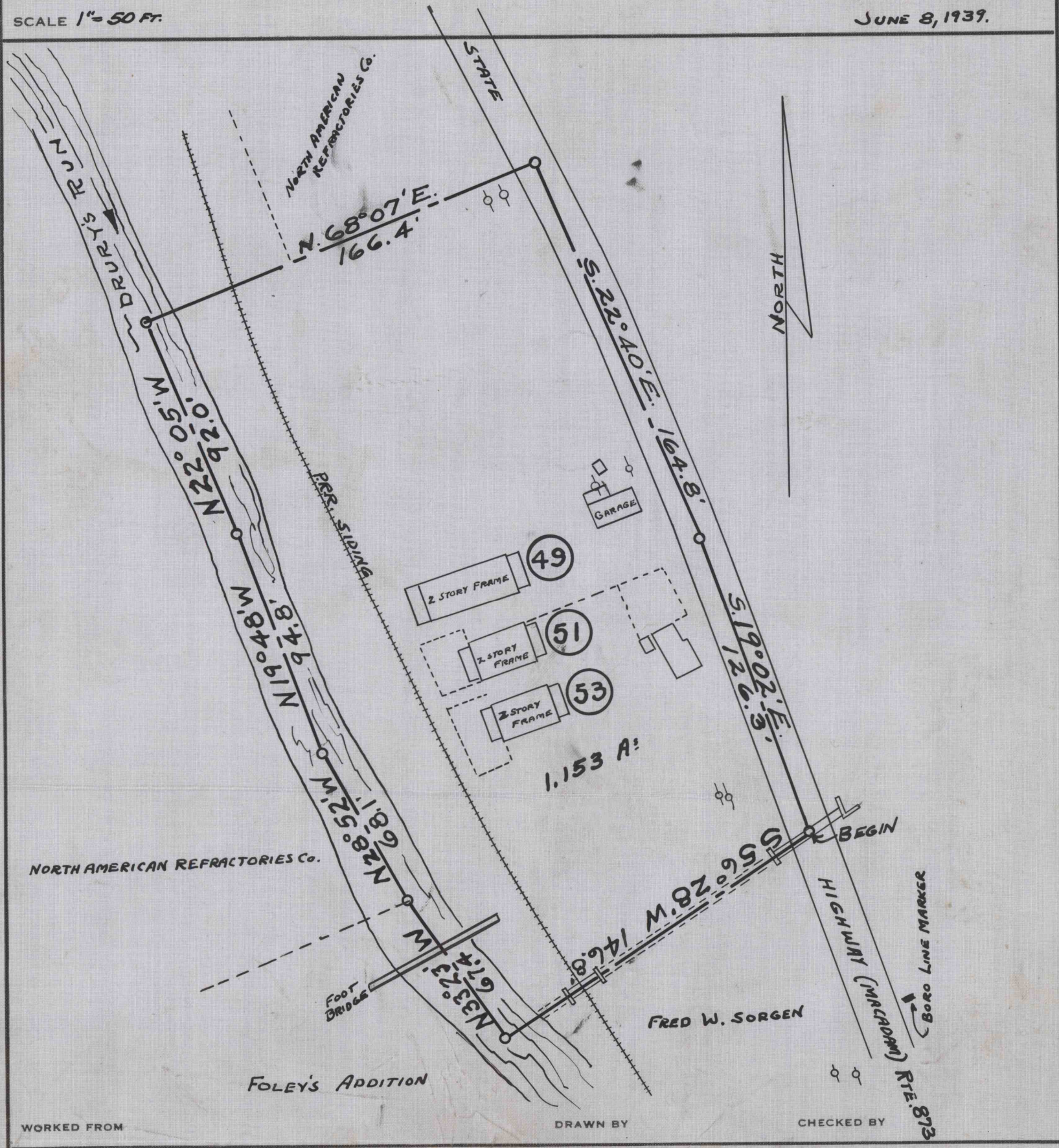
REFERENCE DATA

NORTH AMERICAN REFRACTORIES CO.
 1012 NATIONAL CITY BANK BUILDING
 CLEVELAND, OHIO

ENV. No.
 SHEET No.
40-3-40

SCALE 1" = 50 FT.

JUNE 8, 1939.



WORKED FROM

DRAWN BY

CHECKED BY