

DRURYS RUN LOT N^o 11
NOYES TOWNSHIP - CLINTON COUNTY - PENNA.
 SOLD TO
ROBERT J. & LULU D. SUMMERSON

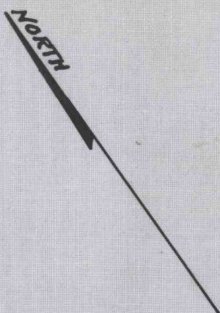
REFERENCE DATA

NORTH AMERICAN REFRACTORIES CO.
 1012 NATIONAL CITY BANK BUILDING
 CLEVELAND, OHIO

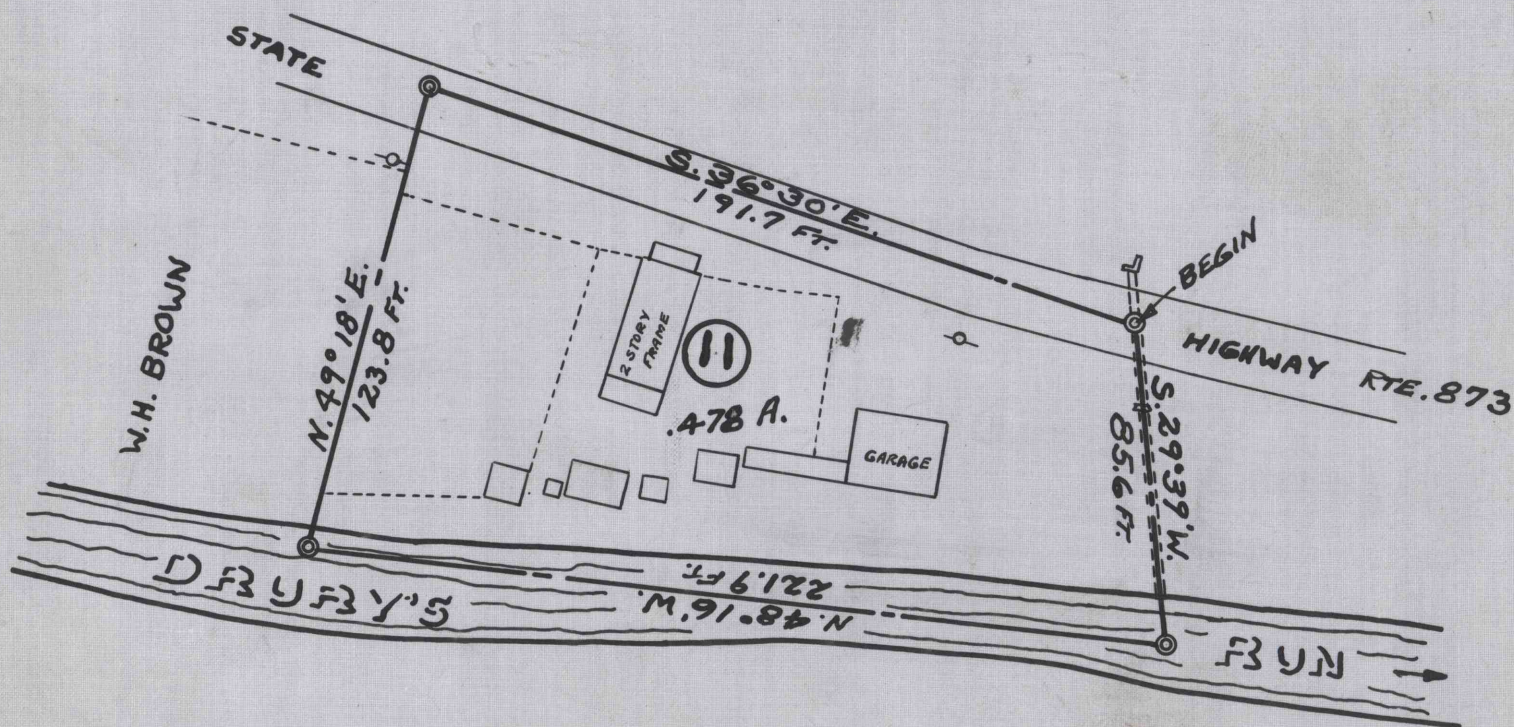
ENV. No.
 SHEET No.
40-3-36

SCALE 1" = 50 FT.

JUNE 8, 1939.



NORTH AMERICAN REFRACTORIES CO.



NORTH AMERICAN REFRACTORIES CO.

WORKED FROM

DRAWN BY

CHECKED BY