

DRURYS RUN LOT N^o 3
NOYES TOWNSHIP - CLINTON COUNTY - PENNA.

REFERENCE DATA

SOLD TO
WILCE H. & EDITH B. BROWN

NORTH AMERICAN REFRATORIES CO.

1012 NATIONAL CITY BANK BUILDING
CLEVELAND, OHIO

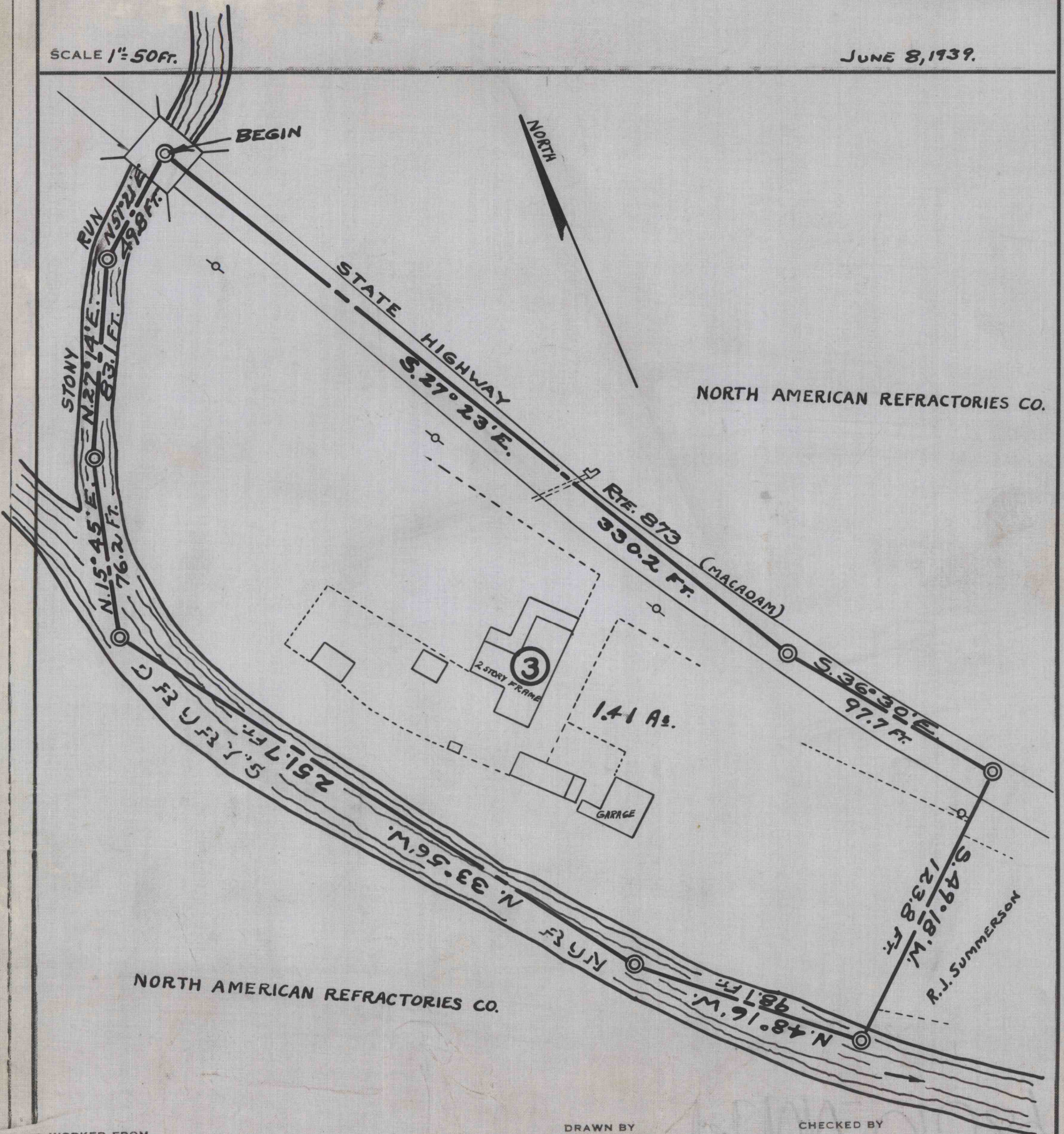
ENV. No.

SHEET No.

40-3-34

SCALE 1" = 50 FT.

JUNE 8, 1939.



WORKED FROM

DRAWN BY

CHECKED BY